



Residential Sustainability Report

Service Period: February 2021

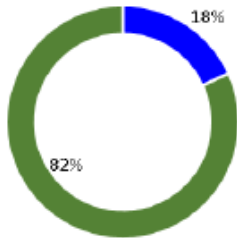
February Diversion Rate: 18%



LOS ALAMOS

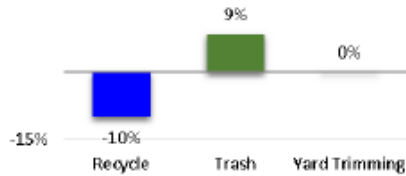
The diversion rate is the percent of recyclable and compostable material diverted from the landfill.

Monthly Collection Report



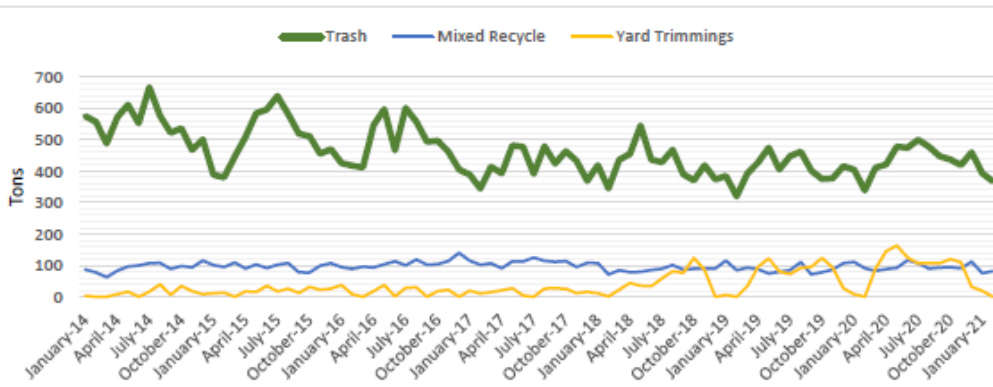
■ Mixed Recycle ■ Trash

% Change Previous Year

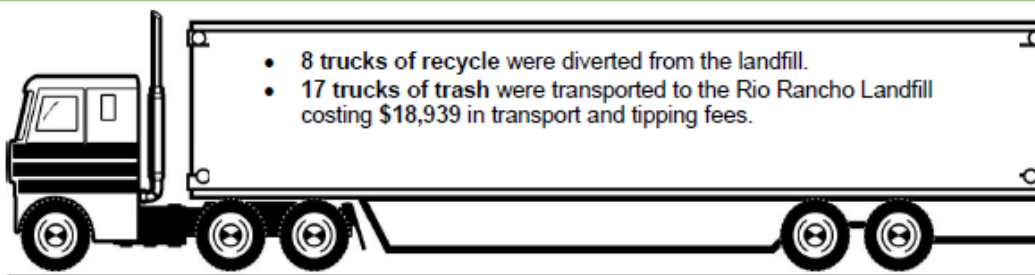


	Feb-20	Feb-21
Yard Trimming	0.00	0.00
Recycle	90.69	81.69
Trash	338.99	368.01

In February by recycling and composting Los Alamos County reduced GHG emissions by ~281 tons



In 2021 by recycling and composting Los Alamos County reduced GHG emissions by ~539 tons



For more information contact Environmental Services Division at 505.662.8163 or email solidwaste@lacnm.us