



INCORPORATED COUNTY OF LOS ALAMOS

101 Camino Entrada, Building 3
Los Alamos, New Mexico 87544 (505) 662-8056
Procurement Division

February 23, 2024

TO ALL HOLDERS OF SOLICITATION DOCUMENTS FOR

Invitation for Bids No. IFB24-40
IFB Name: DP Road Phase II Reconstruction Project

Addendum No. 1

This Addendum No. 1 forms a part of the Solicitation Documents and modifies, as noted below, the original Solicitation Documents identified above. This Addendum as well as all documentation associated with it shall be made available at the following link:

<https://www.losalamosnm.us/Doing-Business/Procurement/IFB24-40-DP-Road-Phase-II-Reconstruction-Project>

The drawings can be found at the following link: <https://losalamosnm.egnyte.com/dl/7xqXuPJgua>

This Addendum provides the following information as well as questions received and the County's answers to all potential Bidders:

1. Agenda and Attendance Sheet from the Pre-Bid Conference held on February 15, 2024 is attached for reference, Attachment A.
2. It appears the Contractor Process Quality Control item was deleted. Is the County taking care of this separately now or is it incidental?

Response: The item 901000 Contractor Process Quality Control has been added to the bid items, please see attached revised Bid Form.

3. There are two (2) bid items for 4" striping-704000 and 704003, please confirm if this is correct.

Response: Item 704003 should have been 8" please see the revised Bid Form. Design plans have it correct as 8" striping for item 704003.

4. On the original project there would be a joint trench for the water and gas; is this still the intent of the County since quantities have changed?

Response: The locations of the Utilities have been changed from the original project plans. Please reference the attached Revised Plan Sheet 2.2 and Sheet E-6 for the location of utilities and trench details.

All other provisions of the Solicitation Documents shall remain unchanged. This Addendum No. 1 is hereby made a part of the Solicitation Documents to the same extent as those provisions contained in the original documents and all itemized listings thereof.

Each Bidder is requested to acknowledge receipt of this Addendum No. 1 with the Bid Forms.

I hereby acknowledge receipt of this Addendum No.1.

Signed	Print Name	Date
--------	------------	------

Title	Company
-------	---------

Attachment A



IFB24-40 DP Road Phase II Improvement Project

*Non-Mandatory Pre-Bid Conference: Thursday February 15, 2024, 10:00 AM
Microsoft Teams meeting*

Join on your computer or mobile app

[Click here to join the meeting](#)

Meeting ID: 222 564 535 700

Passcode: Q9z4kR

AGENDA

I. **Introductions & Sign-In Sheet**

II. **Project Overview**

III. **Schedule for Procurement**

- a. Bids must be received by 2:00 PM MT, Thursday February 29, 2024
 - i. Paper submission: Los Alamos County Purchasing Officer, 101 Camino Entrada, Building 3, Los Alamos, New Mexico
 - ii. Email Submission: lacbid@lacnm.us It is strongly recommended that a second, follow up email (without the Bid included or attached) be sent to carmela.salazar@lacnm.us to confirm the Bid was received.
- b. Submit questions to Keith Wilson (keith.wilson@lacnm.us) and Carmela Salazar no later than 5:00 PM on Thursday February 22, 2024.

IV. **Critical Work Sequencing and Priorities**

- a. Project Dates/Phasing (start & substantial completion) are as follows:
 - i. Bid Award – March 26, 2024
 - ii. Project start on or before – April 15, 2024
 - iii. Mandatory Substantial Completion Base Bid Only – October 15, 2024
 - iv. Mandatory Substantial Completion w/ Bid Alternate– November 15, 2024
 - v. Project Final Completion – December 15, 2024

- b. Work Hours:
 - i. Typically, Monday Through Friday 7:00 am to 5:00 pm.
 - ii. Weekend work will be allowed.
 - iii. Night Work may be allowed pending a Noise Ordinance waiver from the County Manager. Noise Ordinance restrictions are from 9:00 pm to 7:00 am.
- c. Calendar Day project – No time will be granted for adverse weather days.
- d. Liquidated Damages:
 - i. Failure to complete all work on time will result in Liquidated Damages applied to this contract in accordance with the current edition of the New Mexico Department of Transportation Standard Specifications for Highway and Bridge Construction section 108, Table 108.8:1 Schedule of Liquidated Damages. Liquidated damages will be charged per day for failure to complete work by any of the substantial and/or final completion dates listed.

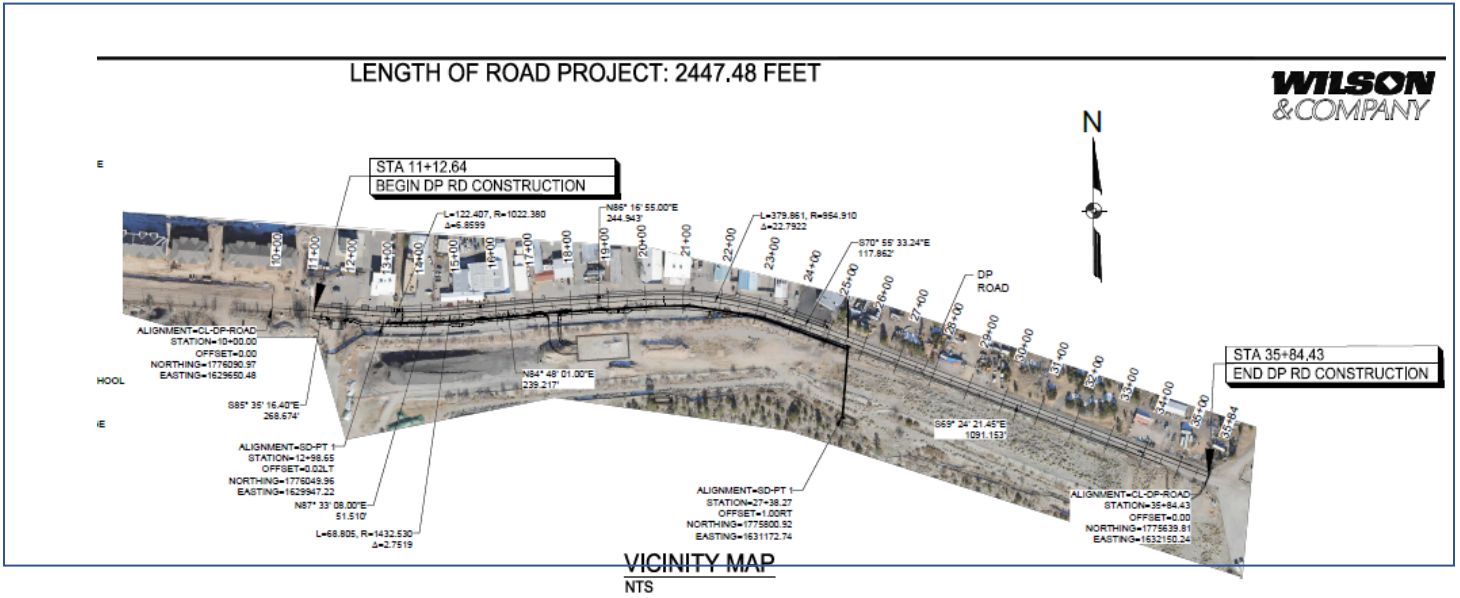
V. Bid Form

- a. The Bidder's Bid Response Documents

The following documents must be completed and included in this preferred order:

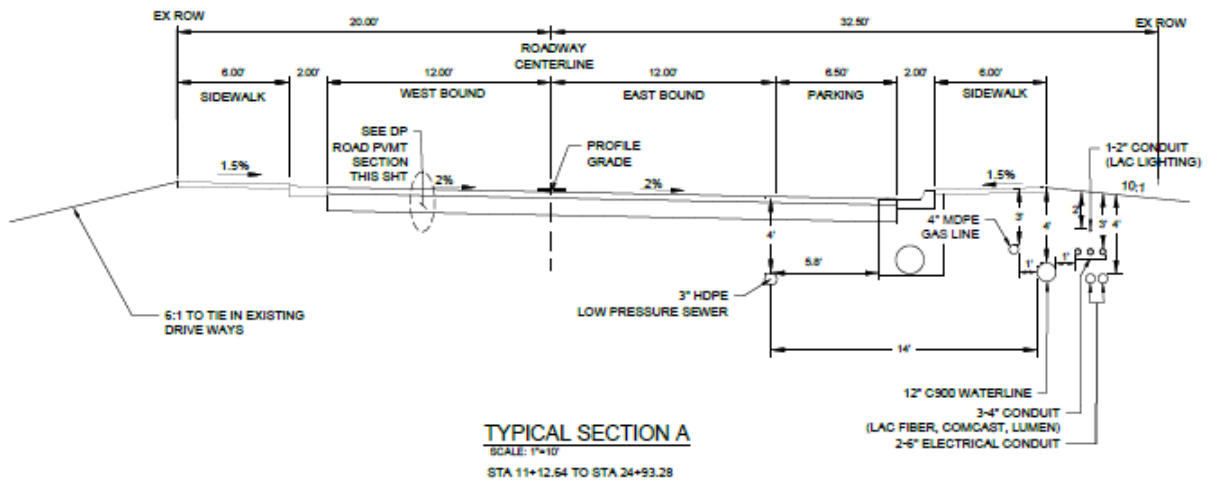
1. Copy of Bidder's State of New Mexico Contractor's License(s) with proper classifications.
2. Bid Form (Section 1.5.1)
3. Alternatives and Allowances, if applicable (Section 1.5.2)
4. List of Subcontractors (Section 1.5.3).
5. Bid Bond (Section 1.5.4)
6. Campaign Contribution Form (Section 1.5.5)
7. Certification – Debarment, Suspension, and other Responsibility Matters (Section 1.5.6)
8. Permanent Main Office Address of Company (Section 1.5.7) – Note requirement to provide a Certificate of Good Standing and Compliance from the New Mexico Secretary of State, if incorporated.
9. Authorization for Verification of Information (Section 1.5.8)
10. Provide proof of online registration and payment of \$400.00 for Certificate of Contractors Registration (Section 1.5.9) with New Mexico Department of Workforce Solutions.

b. Base Bid



Roadway & Parking Area Section:

- DP Road Phase II: Roadway infrastructure and drainage improvements to include removal of existing asphalt surfaces and base material. Re-compaction of subgrade and base material and installation of new asphalt surface. Construction of driveways, sidewalks, curb ramps, and curb and gutters will be completed. Existing streetlighting will be relocated and upgraded with new conduit, arms and fixtures. New storm drain installation to include drop inlets, manholes, median drop inlets, and pond infrastructure. (Roadway Reconstruction: Approx. 2450 feet).

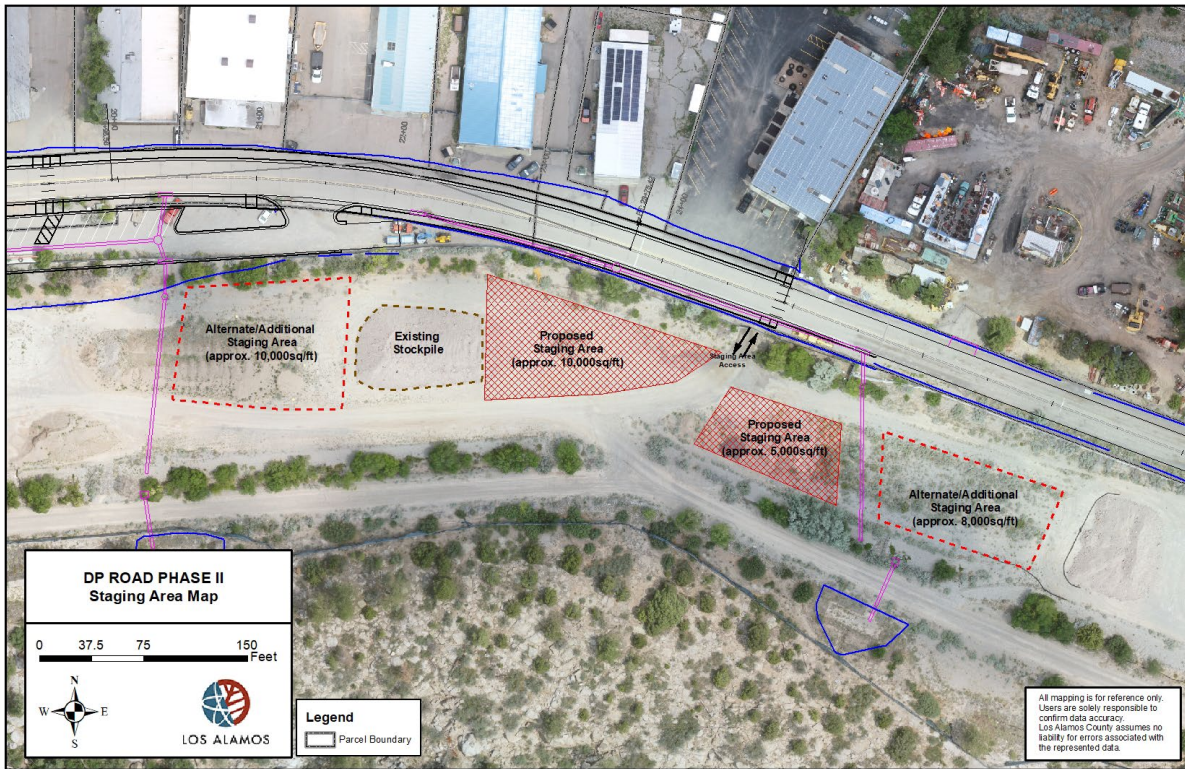


Utilities Section:

- Utilities infrastructure includes installation of low-pressure sewer line 3", 2" by trenching and 3" by slip lining. New Low pressure sewer service manholes. Replacement of water (12-inch) and HDPE gas lines (4-inch). Reconnection of services to adjacent properties. Install conduit for electrical power, County fiber, Century Link/Lumen and Comcast. Add Alternate will include addition 2" low-pressure sewer, 8" and 12" waterline, and 4" HDPE gas line.

VI. Construction Discussion

- a. Construction Staging Yard Provided by LAC – Licensing Agreement Required (Return signed agreement at Pre-Construction Meeting)
 - i. Track A-16
 - ii. Los Alamos County will allow stockpiling of the material within the designated staging area under the terms of the Staging Area Agreement during the project. Prior to Final Completion the Contractor is to haul off site all remaining excess dirt/soil material to a designated location of their choice. Disposal and hauling of the material out of Los Alamos County is incidental to the work and no additional payment will be made by the County.



- b. County Traffic Control – Permit required: Submit TCP to PM, and Traffic and Streets (505) 663-1762.
- c. Existing Utilities to remain live until ready to be switched over to new system
- d. Three AirNet Air Sampler Station within project area. One Air Sampler Station needs to remain active throughout construction, the other two can be removed during construction. A maximum one week shut down to facilitate the final relocation of this one station will be allowed.
- e. Access to adjacent businesses, county trash pickup, mail service, emergency vehicles, and TA-21 must be maintained or closures coordinated.

VII. Questions

- Only questions answered by written Addendum will be binding. Any and all questions are to be submitted in writing to Keith Wilson and Carmela Salazar no later than 5:00 PM on Thursday February 22, 2024.



IFB 24-40 DP ROAD PHASE II IMPROVEMENT PROJECT

Non-Mandatory Pre-Bid Conference: Thursday February 15, 2024, 10:00 AM

ATTENDANCE SHEET

Name	Company	Contact Information	
		Phone No.	E-Mail Address
COUNTY EMPLOYEES			
Keith Wilson	LAC/PW – Project Manager	505-663-1757	keith.wilson@lacnm.us
Casey Aumack	LAC/DPU – Project Manager	505-663-1830	casey.aumack@lacnm.us
Karen Henderson	LAC/PW	505-662-8150	karen.henderosn@lacnm.us
Aaron Park	LAC/PW/Traffic	505-709-0949	Aaron.park@lacnm.us
Stephen Marez	LAC/DPU – EE Manager	505-662-8499	stephen.marez@lacnm.us
Carmela Salazar	LAC/Procurement	505-662-8056	carmela.salazar@lacnm.us
Daniel Blea	LAC/PW/Traffic & Streets	505-662-8206	Daniel.blea@lacnm.us
PARTICIPANTS			
Conrad Ley	Wilson Company		conrad.ley@wilsonco.com
Sam Garrell	AUI, Inc.	505-975-6630	samg@auiinc.net
Rachel Hasse	Hasse Contracting Co, Inc.	505-400-2336	chasse@hasseco.com
Dirk Holtman	Meridian Contracting	505-263-3001	dholtman@meridiancon.net
Tom McConnell	TLC Plumbing	505-362-2523	tmccconnell@tleplumbing.com

ADDENDUM NO. 1 – Revised Bid Form

1.5.1 Bid Form

Bidder agrees to perform the work for the following prices:

The TOTAL amounts of the below bid (excluding NMGRT) shall be shown in both words and figures. In case of discrepancies, the amount shown in words will govern.

UNITS ACRONYMS			
ACRE = Acre	LB = Pound	SQ.YD. = Square Yard	VF-LF = Vertical Feet by
CU.YD. = Cubic Yard	LIN.FT. = Linear Feet	TON = Ton	Linear Feet
EACH = EACH	L.S. = Lump Sum	VF = Vertical Feet	

BASE BID ROADWAY (DP ROAD PHASE II RECONSTRUCTION PROJECT)

ITEM NO.	ITEM DESCRIPTION	UNITS	ESTIMATED QUANTITY	UNIT BID PRICE IN DOLLARS AND CENTS	AMOUNT BID TOTAL IN DOLLARS AND CENTS
201000	CLEARING AND GRUBBING	L.S.	1		
203000	UNCLASSIFIED EXCAVATION	CU.YD.	2900		
203100	BORROW	CU.YD.	360		
203211	UNSTABLE SUBGRADE STABILIZATION	SQ.YD.	700		
203301	ROCK EXCAVATION	CU.YD.	5		
207000	SUBGRADE PREPARATION	SQ.YD.	6600		
303180	BASE COURSE 8"	SQ.YD.	5195		
303500	MOVE, PROCESS AND PLACE MILLINGS	CU.YD.	200		
407000	ASPHALT MATERIAL FOR TACK COAT	TON	2		
408100	PRIME COAT MATERIAL	TON	10		
414130	COLD MILLING ASPHALT 3"	SQ.YD.	4680		

ADDENDUM NO. 1 – Revised Bid Form

Incorporated County of Los Alamos

DP Road Phase II Reconstruction Project – IFB 24-40

417000	MISCELLANEOUS PAVING (3" THICKNESS)	SQ.YD.	750		
423270	HMA (SP-IV) COMPLETE	SQ.YD.	5240		
511000	STRUCTURAL CONCRETE, CLASS A	CU.YD.	8		
570025	24" CULVERT PIPE END SECTION	EACH	1		
570425	18" STORM DRAIN CULVERT PIPE	LIN.FT.	10		
570437	24" STORM DRAIN CULVERT PIPE	LIN.FT.	1430		
601000	REMOVAL OF STRUCTURES AND OBSTRUCTIONS	L.S.	1		
603262	COMPOSTED MULCH SOCKS	LIN.FT.	1150		
603281	SWPPP PREPARATION AND MAINTANCE	L.S.	1		
604003	GEO-TEXTILE FABRIC (SEPARATION & STABILIZATION)	SQ.YD.	10		
607048	CHAIN LINK FENCE SECURITY FENCE 8'	LIN.FT.	610		
607250	REMOVE AND RESET CHAINLINK GATE	EACH	2		
608004	CONCRETE SIDEWALK 4"	SQ.YD.	1100		
608006	CONCRETE SIDEWALK 6"	SQ.YD.	1000		
608304	CONCRETE MEDIAN PAVEMENT 4" COLORED AND PATTERNED	SQ.YD.	80		
609424	CONCRETE VERTICAL CURB & GUTTER TYPE B 6"x24"	LIN.FT.	1500		

ADDENDUM NO. 1 – Revised Bid Form

Incorporated County of Los Alamos

DP Road Phase II Reconstruction Project – IFB 24-40

609636	CONCRETE VALLEY GUTTER 6"X36"	LIN.FT	140		
609706	CONCRETE LAYDOWN CURB & GUTTER TYPE E 6"X24'	LIN.FT.	1410		
617003	VIDEO RECORDING	L.S.	1		
618000	TRAFFIC CONTROL MANAGEMENT	L.S.	1		
621000	MOBILIZATION	L.S.	1		
623050	MODIFIED MEDIAN DROP INLET TYPE I (VALLEY/RURAL) H=3'1" TO 6'0"	EACH	1		
623331	CURB DROP INLET TYPE I-B, OVER 4'	EACH	3		
623332	CURB DROP INLET TYPE II-B, OVER 4'	EACH	3		
623333	CURB DROP INLET TYPE III-B, OVER 4'	EACH	1		
662000	MANHOLE TYPE C-4' DIAMETER 0' TO 6' DEPTH	EACH	4		
663200	ELECTRICAL METER	EACH	1		
701000	PANEL SIGN	SQ.FT.	80		
701100	STEEL POST AND BASE POST FOR ALUMINUM PANEL SIGNS	LIN.FT.	170		
702710	MOBILE TRAFFIC SIGNAL SYSTEM	EACH	2		
702810	TRAFFIC CONTROL DEVICES FOR CONSTRUCTION	L.S	1		
704000	RETROREFLECTIVE PAINTED MARKING 4"	LIN.FT.	7150		

ADDENDUM NO. 1 – Revised Bid Form

Incorporated County of Los Alamos

DP Road Phase II Reconstruction Project – IFB 24-40

704003	RETROREFLECTIVE PAINTED MARKING 8"	LIN.FT.	220		
704704	HOT THERMOPLASTIC PAINTED MARKING 24"	LIN.FT.	215		
704099	TEMPORARY RETROREFLECTORIZED PAINTED MARKINGS 4"	LIN.FT.	1160		
704733	HOT THERMOPLASTIC PAVEMENT MARKING HANDICAPPED SYMBOL	EACH	4		
707525	TYPE V STANDARD 25'	EACH	2		
707801	REMOVE & RESET TYPE V STANDARD COMPLETE	EACH	5		
707822	BASES	EACH	7		
707823	ARMS	EACH	5		
707824	FIXTURES	EACH	7		
709020	RIGID ELECTRICAL CONDUIT 2" (DIA.)	LIN.FT.	1400		
710000	ELECTRICAL PULL BOX (STANDARD)	EACH	7		
711106	SINGLE CONDUCTOR 6	LIN.FT.	4800		
801000	CONSTRUCTION STAKING BY CONTRACTOR	L.S.	1		
802000	POST CONSTRUCTION PLANS	L.S.	1		
901000	CONTRACTOR PROCESS QUALITY CONTROL	L.S.	1		

ADDENDUM NO. 1 – Revised Bid Form

ROADWAY BASE BID –	\$
---------------------------	-----------

Total Roadway Base Bid Amount written in words:

_____ **Dollars**

Note: The bid amount shall exclude state gross receipts tax or local option tax, but shall include all other costs of doing business, including but not limited to bonds, insurance and profit. The Incorporated County of Los Alamos is required to pay the applicable tax including any increase in the applicable tax becoming effective after the date the contract is entered into. The applicable gross receipts tax or local option tax shall be shown as a separate amount on each billing or request for payment under contract. The Incorporated County of Los Alamos reserves the right to reduce or add quantities.

BASE BID UTILITIES (DP ROAD PHASE II RECONSTRUCTION PROJECT)

WATERLINE

ITEM NO.	ITEM DESCRIPTION	UNITS	EST. QTY	UNIT BID PRICE IN DOLLARS AND CENTS	AMOUNT BID TOTAL IN DOLLARS AND CENTS
1	6" WATERLINE PIPE EXCL. FITTINGS, INCL. TRACER WIRE, TRENCH & COMPACTED BACK FILL TO 6' DEPTH, CIP	LIN.FT.	16		
2	8" WATERLINE PIPE EXCL. FITTINGS, INCL. TRACER WIRE, TRENCH & COMPACTED BACK FILL TO 6' DEPTH, CIP	LIN.FT.	102		
3	12" WATERLINE PIPE EXCL. FITTINGS, INCL. TRACER WIRE, TRENCH & COMPACTED BACK FILL TO 6' DEPTH, CIP	LIN.FT.	1483		
4	6" GATE VALVES W/ VALVE CAN, CIP	EACH	1		
5	8" GATE VALVES W/ VALVE CAN, CIP	EACH	3		

ADDENDUM NO. 1 – Revised Bid Form

Incorporated County of Los Alamos

DP Road Phase II Reconstruction Project – IFB 24-40

6	12" GATE VALVES W/ VALVE CAN, CIP	EACH	7		
7	CIP 4-1/2' FIRE HYDRANT W/ PIPING VALVES, AND CONNECTION	EACH	4		
8	DUCTILE IRON MJ FITTINGS, ALL SIZES, CLASS 25, CIP	LB	5032		
9	MECHANICAL JOINT RESTRAINTS GLAND, DI&PVC, 4'-8" CIP	EACH	24		
10	MECHANICAL JOINT RESTRAINTS GLAND, DI&PVC, 10"-12" CIP	EACH	91		
11	PRESSURIZED WATERLINE CONNECTIONS, CIP	EACH	1		
12	INSTALL NEW 1" DOUBLE WATER METER PIT SETTER ASSEMBLY, PER STANDARD DETAIL 6003	EACH	2		
13	INSTALL NEW 1" SINGLE WATER METER PIT SETTER ASSEMBLY, PER STANDARD DETAIL 6003	EACH	16		
14	WATER METER BOX REMOVE & REPLACE	EACH	18		

WATERLINE BASE BID –	\$
-----------------------------	-----------

LOW PRESSURE SANITARY SEWER SYSTEM

15	3" HDPS DIPS DR 11 PIPE EXCL. FITTING INCL TRACER WIRE TRENCH & COMPACTED BACK FILL TO 6'DEPH CIP	LIN.FT.	497		
16	2" HDPS DIPS DR 11 PIPE EXCL. FITTING INCL TRACER WIRE TRENCH &	LIN.FT.	1418		

ADDENDUM NO. 1 – Revised Bid Form

Incorporated County of Los Alamos

DP Road Phase II Reconstruction Project – IFB 24-40

	COMPACTED BACK FILL TO 6'DEPTH CIP				
17	3" HDPS SLIPLINE INSTALLED IN EXISTING 8" FORCEMAIN INCLUDING GROUT FILLING CIP	LIN.FT.	1178		
18	FURNISH AND INSTALL 1 IN DR11 HDPE PIPE CIP SANITARY SERVICE LINE FROM MAIN TO HOUSE CONNECTION MATERIAL CLEANOUT LBAOR EXCAVATION BACKFILL AND SITE RESTORATION CIP	LIN.FT.	18		
19	SLIPLINE BORE PIT 3 INCLUDING EXCAVATION, BACKFILL, COMPACTION, ASPHALT REMOVAL AND REPLACEMENT CIP	LS	1		
20	SLIPLINE BORE PIT 1 INCLUDING EXCAVATION, BACKFILL, COMPACTION, ASPHALT REMOVAL AND REPLACEMENT CIP	LS	1		
21	LOW PRESSURE CLEANOUT, INCL, CONNECTION TO LOW PRESSURE SEWER MANHOLE CONCRETE COLLAR CIP	LS	3		
22	NEW SERVICE LINE CONNECTION 2" AND 3" PER COUNTY STANDARD DETAIL CIP	EACH	18		
23	EXCAVATE AND DISPOSE OF UNSUITABLE MATERIAL CIP	CU YD	1235		
24	IMPORT OF SELECT MATERIAL	CU YD	1235		

LOW PRESSURE SANITARY SEWER SYSTEM BASE BID –	\$
--	-----------

ADDENDUM NO. 1 – Revised Bid Form

Incorporated County of Los Alamos

DP Road Phase II Reconstruction Project – IFB 24-40

GASLINE

25	TIE-IN NEW 4" MDPE TO EXISTING 4" MDPE WITH 2" BY-PASS	EACH	1		
26	4" MDPE GASLINE INCL FITTING, TRACER WIRE, WARNING TAPE, TRENCH, BEDDING & COMPACTED BACKFILL TO 6' DEPTH CIP	LIN FT	1483		
27	4" MDPE BALL VALVES W/ VALVE CAN, CONCRETE COLLAR CAP	EACH	1		
27	2" MDPE GASLINE INCL FITTING, TRACER WIRE, WARNING TAPE, TRENCH, BEDDING & COMPACTED BACKFILL TO 6' DEPTH CIP	LIN FT	120		
28	1' MDPE (SERVICE LINE) INCL FITTING, TRACER WIRE, WARNING TAPE, TRENCH, BEDDING & COMPACTED BACKFILL TO 6' DEPTH	LIN FT	1000		
29	2" MDPE BALL VALVLE W/ VAVLE CAN, CONCRETE COLLAR, CIP	EACH	3		
30	1" MDPE BALL VALVE W/2-1/2" VALVE BOX, CONCRETE COLLAR, CIP (SERVICE VALVA @PROPERTY LINE)	EACH	19		
31	TRANSFER EXISTING GAS SERVICE TO NEW 1" MDPE SERVICE LINE, CIP	EACH	19		

GASLINE BASE BID –	\$
---------------------------	-----------

ADDENDUM NO. 1 – Revised Bid Form

Incorporated County of Los Alamos

DP Road Phase II Reconstruction Project – IFB 24-40

ELECTRIC LINES

40	6" SCHEDULE 40 ELECTRICAL CONDUIT	LIN.FT.	1800		
41	4" SCHEDULE 40 ELECTRICAL CONDUIT	LIN.FT.	1500		
42	3" SCHEDULE 40 ELECTRICAL CONDUIT	LIN.FT.	1000		
43	6" RIGID STEEL 90- DEGREE ELBOW (TAPED)	EACH	20		
44	4" RIGID STEEL 90- DEGREE ELBOW (TAPED)	EACH	20		
45	3" RIGID STEEL 90- DEGREE ELBOW (TAPED)	EACH	25		
46	ELECTRIC VAULT 4'X4'X6'	EACH	6		
47	ELECTRIC VAULT 4'X4'X4'	EACH	12		
48	ELECTRIC PEDESTAL LIGHTS 12X12X18	EACH	6		

ELECTRIC LINES BASE BID –	\$
----------------------------------	-----------

COUNTY FIBER LINES

49	4" SCHEDULE 40 ELECTRICAL CONDUIT	LIN.FT.	3200		
50	4" SCHEDULE 40 90- DEGREE ELBOW	EACH	35		
51	COMMUNICATIONS FLUSH MOUNT PEDESTAL 12"X18"X24"	EACH	12		

COUNTY FIBER LINES BASE BID –	\$
--------------------------------------	-----------

ADDENDUM NO. 1 – Revised Bid Form

Incorporated County of Los Alamos

DP Road Phase II Reconstruction Project – IFB 24-40

COMCAST LINES

52	4" SCHEDULE 40 ELECTRICAL CONDUIT	LIN.FT.	1500		
53	4" SCHEDULE 40 90- DEGREE ELBOW	EACH	20		

COMCAST LINES BASE BID –	\$
---------------------------------	-----------

LUMEN LINES

52	4" SCHEDULE 40 ELECTRICAL CONDUIT	LIN.FT.	1500		
53	4" SCHEDULE 40 90- DEGREE ELBOW	EACH	20		

LUMEN LINES BASE BID –	\$
-------------------------------	-----------

TOTAL UTILITIES BASE BID –	\$
-----------------------------------	-----------

Total Utilities Base Bid Amount written in words:

_____ **Dollars**

Note: The bid amount shall exclude state gross receipts tax or local option tax, but shall include all other costs of doing business, including but not limited to bonds, insurance and profit. The Incorporated County of Los Alamos is required to pay the applicable tax including any increase in the applicable tax becoming effective after the date the contract is entered into. The applicable gross receipts tax or local option tax shall be shown as a separate amount on each billing or request for payment under contract. The Incorporated County of Los Alamos reserves the right to reduce or add quantities.

TOTAL ROADWAY and UTILITIES BASE BID –	\$
---	-----------

Total Roadway and Utilities Base Bid Amount written in words:

_____ **Dollars**

ADDENDUM NO. 1 – Revised Bid Form

Incorporated County of Los Alamos

DP Road Phase II Reconstruction Project – IFB 24-40

Note: The bid amount shall exclude state gross receipts tax or local option tax, but shall include all other costs of doing business, including but not limited to bonds, insurance and profit. The Incorporated County of Los Alamos is required to pay the applicable tax including any increase in the applicable tax becoming effective after the date the contract is entered into. The applicable gross receipts tax or local option tax shall be shown as a separate amount on each billing or request for payment under contract. The Incorporated County of Los Alamos reserves the right to reduce or add quantities.

1.5.2 Alternates and Allowances

Bid Alternate Items	
<p><i>Note to Bidders: Bid Alternate Items are intended to stand alone and are therefore separate from the Base Bid Items. Each Bid Alternate is a standalone price, excluding NMGRT. As such, the Bidder shall include all applicable Insurance and Bonds Costs in each Bid Alternate Item.</i></p> <p><i>Depending on Total Base Bid amount and County’s budget, a determination, at County’s sole discretion, will be made if the bid alternates will be awarded in their entirety, individually or none at all.</i></p>	

BID ALTERNATE ROADWAY (DP ROAD PHASE II RECONSTRUCTION PROJECT)

ITEM NO.	ITEM DESCRIPTION	UNITS	ESTIMATED QUANTITY	UNIT BID PRICE IN DOLLARS AND CENTS	AMOUNT BID TOTAL IN DOLLARS AND CENTS
201000	CLEARING AND GRUBBING	L.S.	1		
203000	UNCLASSIFIED EXCAVATION	CU.YD.	1600		
203100	BORROW	CU.YD.	185		
203211	UNSTABLE SUBGRADE STABILIZATION	SQ.YD.	400		
203301	ROCK EXCAVATION	CU.YD.	5		
207000	SUBGRADE PREPARATION	SQ.YD.	3700		
303180	BASE COURSE 8"	SQ.YD.	3365		

ADDENDUM NO. 1 – Revised Bid Form

Incorporated County of Los Alamos

DP Road Phase II Reconstruction Project – IFB 24-40

303500	MOVE, PROCESS AND PLACE MILLINGS	CU.YD.	100		
407000	ASPHALT MATERIAL FOR TACK COAT	TON	1		
408100	PRIME COAT MATERIAL	TON	7		
414130	COLD MILLING ASPHALT 3"	SQ.YD.	5420		
423270	HMA (SP-IV) COMPLETE	SQ.YD.	2880		
601000	REMOVAL OF STRUCTURES AND OBSTRUCTIONS	L.S.	1		
603281	SWPPP PREPARATION AND MAINTANCE	L.S.	1		
607048	CHAIN LINK FENCE SECURITY FENCE 8'	LIN.FT	150		
607412	CHAINLINK GATE	EACH	2		
617003	VIDEO RECORDING	L.S.	1		
618000	TRAFFIC CONTROL MANAGEMENT	L.S.	1		
621000	MOBILIZATION	L.S.	1		
702810	TRAFFIC CONTROL DEVICES FOR CONSTRUCTION	L.S	1		
704000	RETROREFLECTORIZED PAINTED MARKING 4"	LIN.FT.	7200		
704099	TEMPORARY RETROREFLECTORIZED PAINTED MARKING 4"	LIN.FT.	1160		
801000	CONSTRUCTION STAKING BY THE CONTRACTOR	L.S.	1		

ADDENDUM NO. 1 – Revised Bid Form

Incorporated County of Los Alamos

DP Road Phase II Reconstruction Project – IFB 24-40

802000	POST CONSTRUCTION PLANS	L.S	1		
901000	CONTRACTOR PROCESS QUALITY CONTROL	L.S.	1		

ROADWAY BID ALTERNATE-	\$
-------------------------------	-----------

Total Roadway Bid Alternate Amount written in words:

_____ Dollars

Note: The bid amount shall exclude state gross receipts tax or local option tax, but shall include all other costs of doing business, including but not limited to bonds, insurance and profit. The Incorporated County of Los Alamos is required to pay the applicable tax including any increase in the applicable tax becoming effective after the date the contract is entered into. The applicable gross receipts tax or local option tax shall be shown as a separate amount on each billing or request for payment under contract. The Incorporated County of Los Alamos reserves the right to reduce or add quantities.

BID ALTERNATE UTILITIES (DP ROAD PHASE II RECONSTRUCTION PROJECT)

WATERLINE

ITEM NO.	ITEM DESCRIPTION	UNITS	EST. QTY	UNIT BID PRICE IN DOLLARS AND CENTS	AMOUNT BID TOTAL IN DOLLARS AND CENTS
1	8" WATERLINE PIPE EXCL. FITTINGS, INCL. TRACER WIRE, TRENCH & COMPACTED BACK FILL TO 6' DEPTH, CIP	LIN.FT.	188		
2	12" WATERLINE PIPE EXCL. FITTINGS, INCL. TRACER WIRE, TRENCH & COMPACTED BACK FILL TO 6' DEPTH, CIP	LIN.FT.	984		
3	FUNISH AND INSTALL NEW 13'X8'10" PRECAST VAULT W/BYPASS AND ALL ACCESSORIOES CIP	EACH	1		

ADDENDUM NO. 1 – Revised Bid Form

Incorporated County of Los Alamos

DP Road Phase II Reconstruction Project – IFB 24-40

4	8" GATE VALVES W/ VALVE CAN, CIP	EACH	7		
5	12" GATE VALVES W/ VALVE CAN, CIP	EACH	8		
7	CIP 4-1/2' FIRE HYDRANT W/ PIPING VALVES, AND CONNECTION	EACH	3		
8	DUCTILE IRON MJ FITTINGS, ALL SIZES, CLASS 25, CIP	LB	2500		
9	MECHANICAL JOINT RESTRAINTS GLAND, DI&PVC, 4'-8" CIP	EACH	34		
10	MECHANICAL JOINT RESTRAINTS GLAND, DI&PVC, 10'-12" CIP	EACH	36		
11	PRESSURIZED WATERLINE CONNECTIONS, CIP	EACH	1		
12	INSTALL NEW 1" SINGLE WATER METER PIT SETTER ASSEMBLY, PER STANDARD DETAIL 6003	EACH	5		
13	WATER METER BOX REMOVE & REPLACE	EACH	5		

WATERLINE BID ALTERNATE--	\$
----------------------------------	-----------

LOW PRESSURE SANITARY SEWER SYSTEM

14	2" HDPS DIPS DR 11 PIPE EXCL. FITTING INCL TRACER WIRE TRENCH & COMPACTED BACK FILL TO 6'DEPH CIP	LIN.FT.	1005		
15	FURNISH AND INSTALL 1 IN DR11 HDPE PIPE CIP SANITARY SERVICE LINE FROM MAIN TO HOUSE CONNECTION MATERIAL CLEANOUT LABOR	LIN.FT.	5		

ADDENDUM NO. 1 – Revised Bid Form

Incorporated County of Los Alamos

DP Road Phase II Reconstruction Project – IFB 24-40

	EXCAVATION BACKFILL AND SITE RESTORATION CIP				
16	LOW PRESSURE CLEANOUT, INCL, CONNECTION TO LOW PRESSURE SEWER MANHOLE CONCRETE COLLAR CIP	LS	1		
17	NEW SERVICE LINE CONNECTION 2" AND 3" PER COUNTY STANDARD DETAIL CIP	EACH	5		
18	EXCAVATE AND DISPOSE OF UNSUITABLE MATERIAL CIP	CU YD	302		
19	IMPORT OF SELECT MATERIAL	CU YD	302		

LOW PRESSURE SANITARY SEWER SYSTEM BID ALTERNATE –	\$
---	-----------

GASLINE

20	4" MDPE GASLINE INCL FITTING, TRACER WIRE, WARNING TAPE, TRENCH, BEDDING & COMPACTED BACKFILL TO 6' DEPTH, CIP	LIN FT	984		
21	2" MDPE GASLINE INCL FITTING, TRACER WIRE, WARNING TAPE, TRENCH, BEDDING & COMPACTED BACKFILL TO 6' DEPTH, CIP	LIN FT	300		
22	4" MDPE BALL VALVES W/ VALVE CAN, CONCRETE COLLAR, CIP	EACH	1		
23	2" MDPE BALL VALVES W/ VALVE CAN, CONCRETE COLLAR, CIP	EACH	8		

ADDENDUM NO. 1 – Revised Bid Form

Incorporated County of Los Alamos

DP Road Phase II Reconstruction Project – IFB 24-40

GASLINE BID ALTERNATE –	\$
--------------------------------	-----------

TOTAL UTILITIES BID ALTERNATE –	\$
--	-----------

Total Utilities Bid Alternate Amount written in words:

_____ **Dollars**

Note: The bid amount shall exclude state gross receipts tax or local option tax, but shall include all other costs of doing business, including but not limited to bonds, insurance and profit. The Incorporated County of Los Alamos is required to pay the applicable tax including any increase in the applicable tax becoming effective after the date the contract is entered into. The applicable gross receipts tax or local option tax shall be shown as a separate amount on each billing or request for payment under contract. The Incorporated County of Los Alamos reserves the right to reduce or add quantities.

TOTAL ROADWAY and UTILITIES BID ALTERNATE –	\$
--	-----------

Total Roadway and Utilities Bid Alternate Amount written in words:

_____ **Dollars**

Note: The bid amount shall exclude state gross receipts tax or local option tax, but shall include all other costs of doing business, including but not limited to bonds, insurance and profit. The Incorporated County of Los Alamos is required to pay the applicable tax including any increase in the applicable tax becoming effective after the date the contract is entered into. The applicable gross receipts tax or local option tax shall be shown as a separate amount on each billing or request for payment under contract. The Incorporated County of Los Alamos reserves the right to reduce or add quantities.

ADDENDUM NO. 1 – Revised Bid Form

Incorporated County of Los Alamos

DP Road Phase II Reconstruction Project – IFB 24-40

This bid is hereby submitted by the undersigned, in full conformity with the solicitation documents, and warrant that the undersigned. Has the authority to bind the General Contractor for the work.

I the undersigned have reviewed the Summary of Work and certify that the following licenses are required to fully perform the Summary of Work and that I as the General Contractor and/or Sub-contractors to be employed under this contract possess such New Mexico Contractor’s License Number(s) and Classification(s):

Contractor	License Number(s)	Classification(s)

Signature of Agent authorized to sign on behalf of Bidder

Printed Name & Title of Agent

Organization’s Legal Name

Mailing Address Physical Address

City, State, Zip Code

Telephone Number Fax Number

Federal Tax I.D Number NM BTIN # (if located in-state), formerly CRS #

N.M. Preference Certification (attach copy)

ADDENDUM NO. 1 – Revised Bid Form

Incorporated County of Los Alamos

DP Road Phase II Reconstruction Project – IFB 24-40

Los Alamos County Business License Number: (Required to perform work in the County)

NOTE: The bid amount shall exclude state gross receipts tax or local option tax, but shall include all other costs of doing business, including but not limited to bonds, insurance, and profit. The Incorporated County of Los Alamos is required to pay the applicable tax including any increase in the applicable gross receipts tax or local option tax shall be shown as a separate amount on each billing or request for payment under the contract. The Incorporated County of Los Alamos reserves the right to reduce or add quantities.

NON-DISCRIMINATION POLICY: This Company does not discriminate on the basis of color, national origin, sex, religion, age, and disabled status in employment or the provision of services.