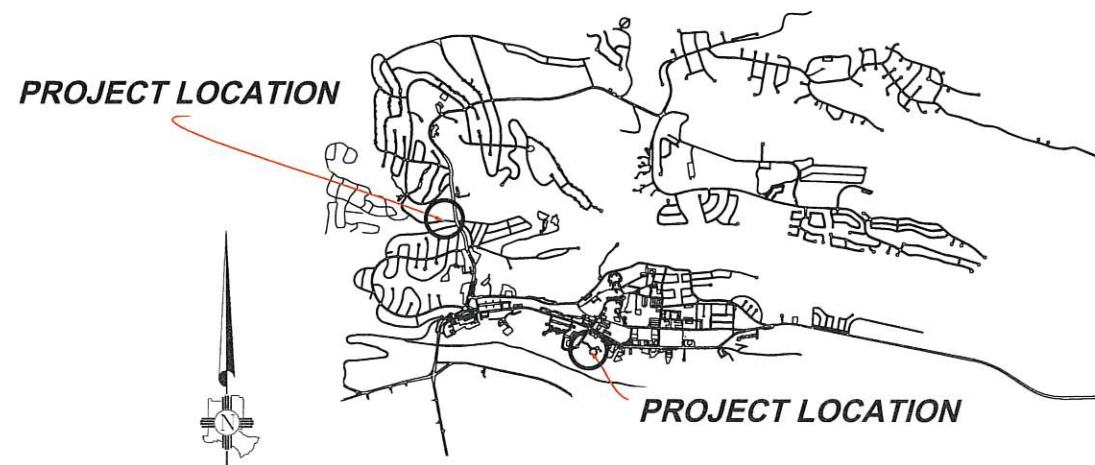
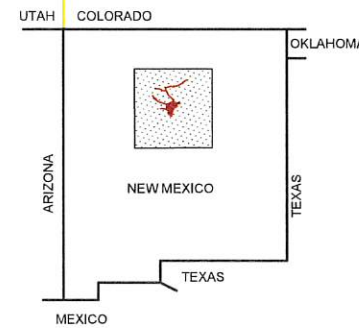


# Lift Station Rehabilitation Project - Los Arboles and North Road

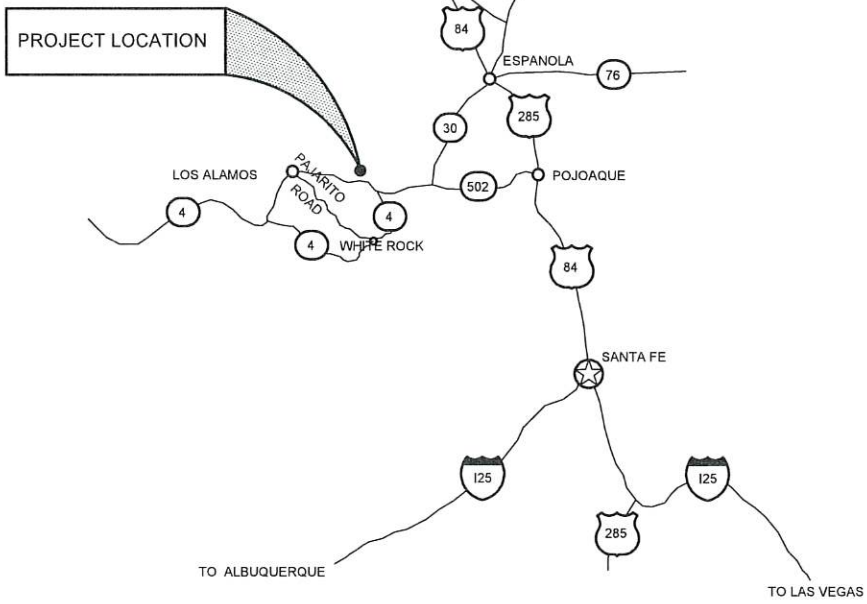
IFB-2025-04  
LOS ALAMOS COUNTY - NEW MEXICO



LOS ALAMOS



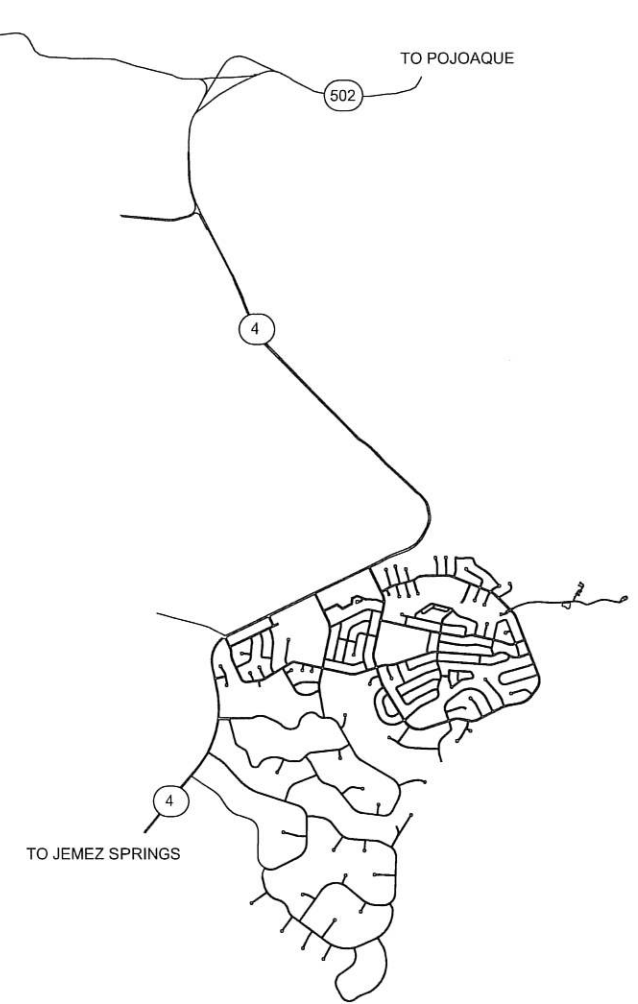
LOS ALAMOS VICINITY MAP  
NOT TO SCALE



NEW MEXICO REGIONAL MAP  
NOT TO SCALE


**SHEET INDEX**

TITLE SHEET
2 LOS ARBOLES SITE PLAN
3 LOS ARBOLES ELECTRICAL IMPROVEMENTS
4 LOS ARBOLES MECHANICAL IMPROVEMENTS
5 LOS ARBOLES PUMP SPECIFICATIONS
6 NORTH ROAD SITE PLAN
7 NORTH ROAD ELECTRICAL IMPROVEMENTS
8 NORTH ROAD MECHANICAL IMPROVEMENTS
9 NORTH ROAD PUMP SPECIFICATIONS
10 ELECTRICAL TRENCHING STANDARD

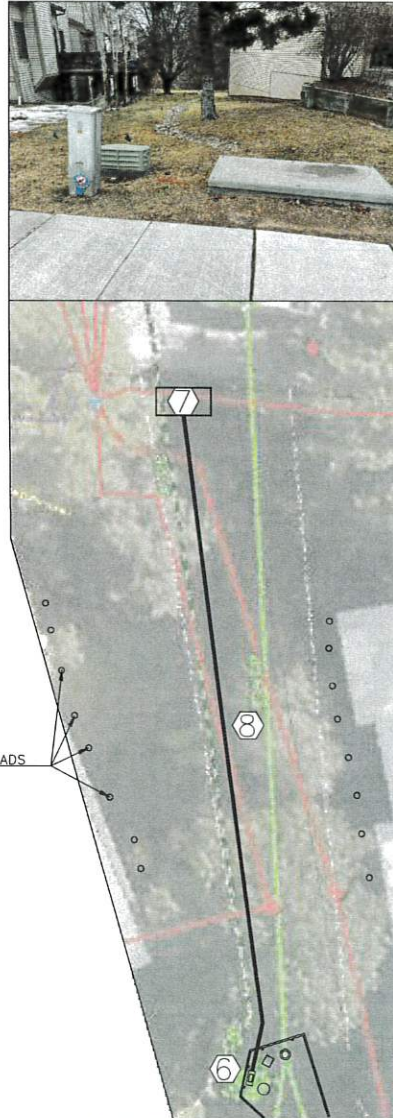
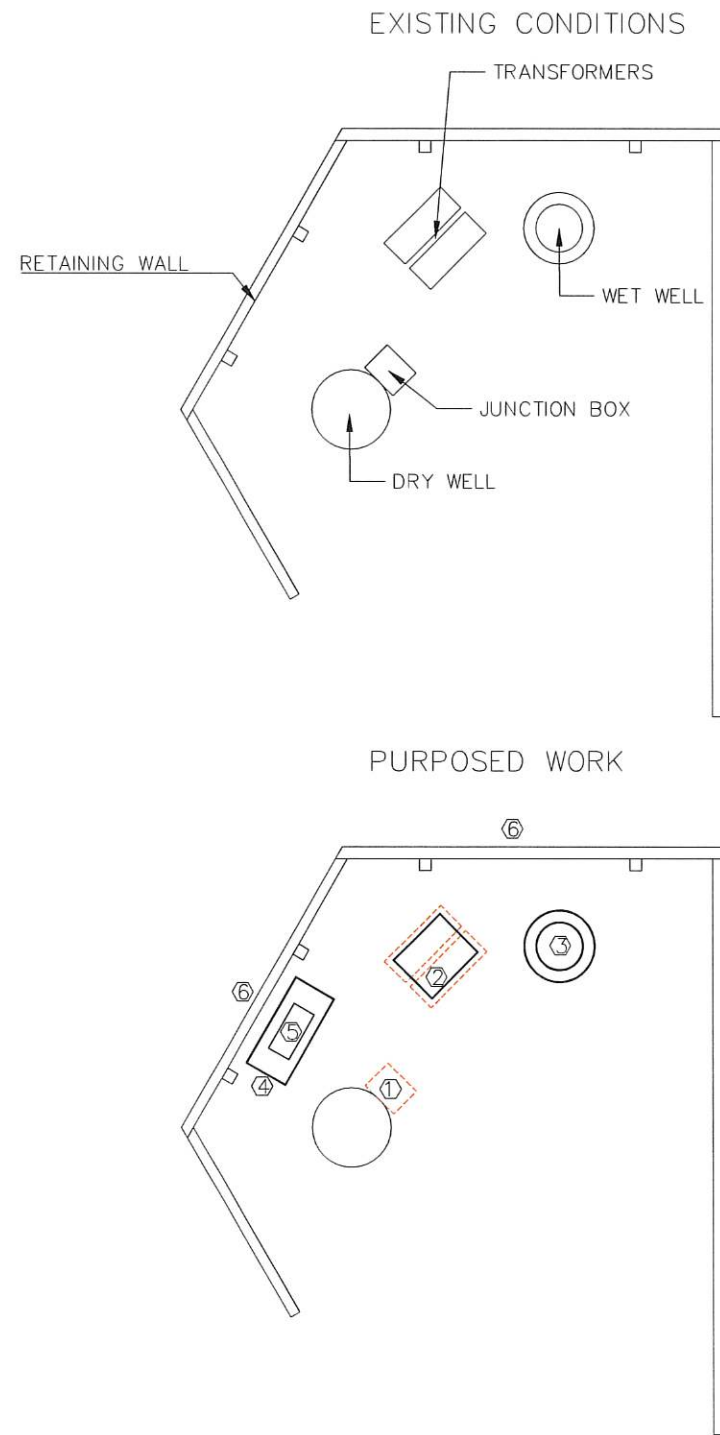


WHITE ROCK VICINITY MAP  
NOT TO SCALE

APPROVED BY:  DATE 7-8-2024  
DEPARTMENT OF PUBLIC UTILITIES PROJECT ENGINEER

 DATE 7-8-2024  
DEPARTMENT OF PUBLIC UTILITIES ENGINEERING ASSOCIATE

Drawing File: PROJECTS\IFG 2023\_LIFT STATION REHAB\03\_DESIGN\DESIGN DOCUMENT\COVER & TITLE SHEET LOS ARBOLES.DWG



**GENERAL NOTES**

- EXISTING SPRINKLER IRRIGATION SYSTEM PIPING LOCATION UNKNOWN, SPRINKLER HEADS NEAR BUILDINGS. COORDINATE WITH HOA TO LOCATE
- HAND DIGGING REQUIRED AROUND TREE ROOTS
- RETURN LANDSCAPING TO EXISTING CONDITIONS OR BETTER
- LAC LINEMEN TO INSTALL TRANSFORMER AND REMOVAL OF EXISTING TRANSFORMER, CONTRACTOR TO COORDINATE WITH LINEMEN FOR ALL ELECTRICAL INSTALLATIONS
- DURING SEWAGE OUTAGE, CONTRACTOR MUST MANUALLY BY-PASS FORCE MAIN WITH PUMP FROM WET WELL

**KEYED NOTES**

- REMOVE EXISTING JUNCTION BOX REFINISH DRY WELL WALL FROM WELDING MARKS
- ASSIST COUNTY LINEMEN EXCAVATING EXISTING TRANSFORMER BOXES AND PLACEMENT OF NEW SPLICE BOX
- REMOVE EXISTING BROKEN 4' RING AND COVER. REPLACE EXISTING COLLAR AND LID WITH NEW CONCRETE COLLAR AND LID
- INSTALL 5'X2' CONCRETE PAD ROUTE NEW CONDUIT INTO PAD
- INSTALL NEW CONTROL PANEL AS DETAILED ON SHEET 4
- REMOVE EXISTING TIMBER BEAMS AS NEEDED FOR ACCESS AND REPLACE TO EXISTING CONDITIONS AT COMPLETION OF WORK
- INSTALL CONCRETE PAD FOR NEW ELECTRICAL TRANSFORMER TO BE INSTALLED BY DPU LINEMAN
- INSTALL 100' OF 4" CONDUIT FROM TRANSFORMER TO NEW CONTROL PANEL, OWNER TO PROVIDE WIRING AND COUNTY LINEMEN TO PULL THE CABLES



NO.	REVISION DESCRIPTION
1	
2	
3	
4	
5	

DESIGNED BY:	
DRAWN BY:	
APPROVED BY:	
DATE:	
SCALE:	

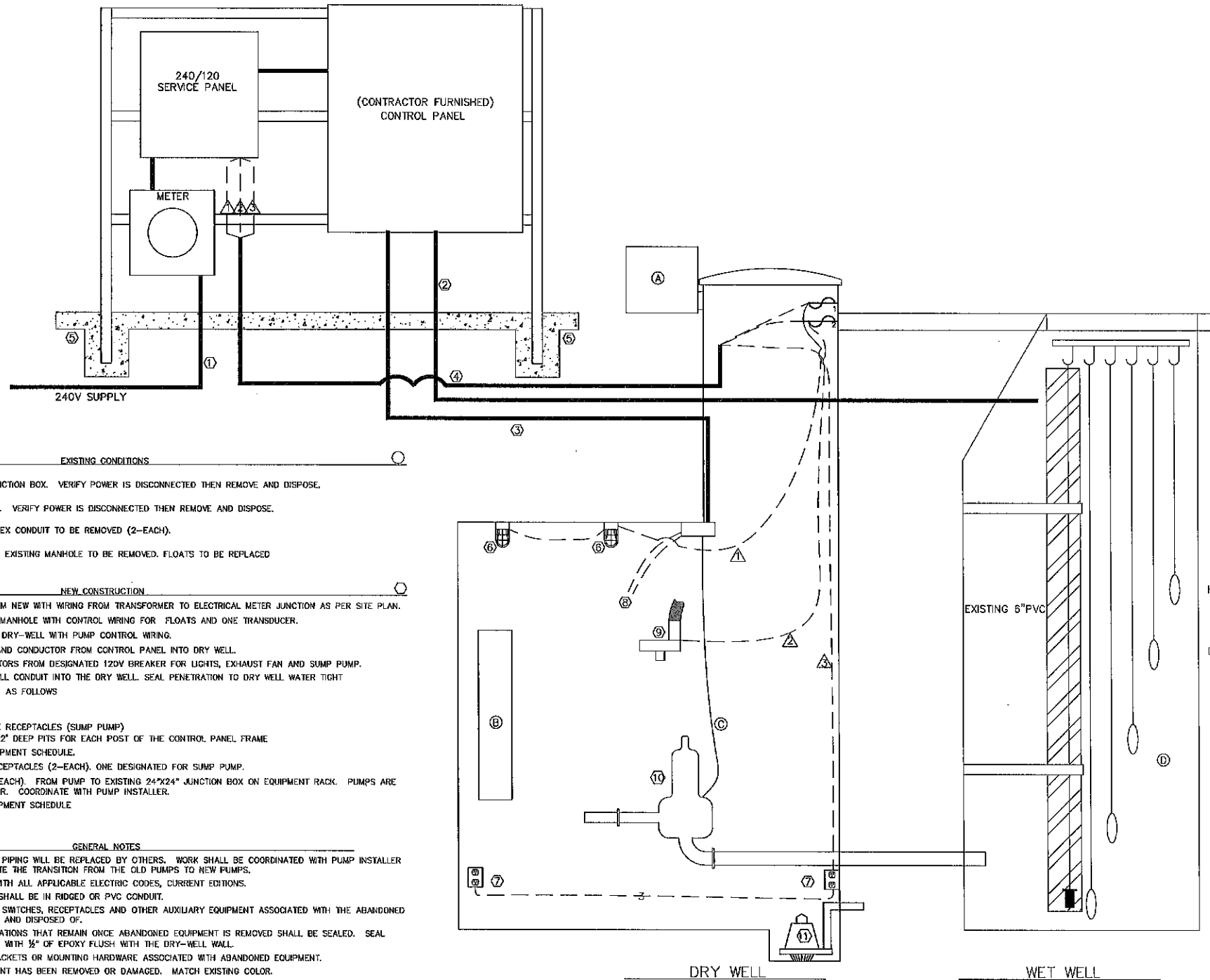
**LOS ARBOLES**  
LIFT STATION IMPROVEMENTS  
SITE PLAN



INCORPORATED COUNTY  
OF LOS ALAMOS  
DEPARTMENT OF PUBLIC  
UTILITIES  
1000 CENTRAL AVE., SUITE 130  
LOS ALAMOS, NEW MEXICO 87544  
(505) 662-8333 FAX: (505) 662-8005



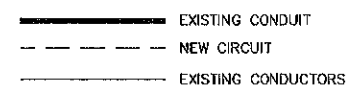
EXISTING ELECTRICAL/CONTROLS



EQUIPMENT SCHEDULE			
ITEM	MAKE	MODEL	GRAINGER CATALOG #
SUMP PUMP	GOULDS	110VAC/35 GPM @ 10'TDH	462D15
LED LIGHT FIXTURE	LITHONIA LIGHTING	OLVTCM	26X701
EXHAUST FAN	FANTECH	FG 4XL	15W687
FLEXIBLE DUCT	WESTAFLEX	2505 (15 FEET)	3C591

- EXISTING CONDITIONS**
- Ⓐ EXISTING ABANDONED 240V STEEL JUNCTION BOX. VERIFY POWER IS DISCONNECTED THEN REMOVE AND DISPOSE.
  - Ⓑ EXISTING ABANDONED CONTROL PANEL. VERIFY POWER IS DISCONNECTED THEN REMOVE AND DISPOSE.
  - Ⓒ EXISTING PUMP CONTROL WIRING IN FLEX CONDUIT TO BE REMOVED (2-EACH).
  - Ⓓ EXISTING FLOATS AND TRANSDUCER IN EXISTING MANHOLE TO BE REMOVED. FLOATS TO BE REPLACED
- NEW CONSTRUCTION**
- ① INSTALL NEW 1-1/2\"/>
- GENERAL NOTES**
1. NEW PUMPS, VALVES AND DISCHARGE PIPING WILL BE REPLACED BY OTHERS. WORK SHALL BE COORDINATED WITH PUMP INSTALLER AND LOS ALAMOS COUNTY TO EXPEDITE THE TRANSITION FROM THE OLD PUMPS TO NEW PUMPS.
  2. ALL ELECTRIC WORK SHALL COMPLY WITH ALL APPLICABLE ELECTRIC CODES, CURRENT EDITIONS.
  3. ALL NEW CONDUCTORS IN DRY-WELL SHALL BE IN RIDGED OR PVC CONDUIT.
  4. ABANDONED CONTROL PANEL, WIRING, SWITCHES, RECEPTACLES AND OTHER AUXILIARY EQUIPMENT ASSOCIATED WITH THE ABANDONED ELECTRIC SYSTEM SHALL BE REMOVED AND DISPOSED OF.
  5. ANY CONDUITS OR DRY-WELL PENETRATIONS THAT REMAIN ONCE ABANDONED EQUIPMENT IS REMOVED SHALL BE SEALED. SEAL PENETRATIONS WITH SILICON AND CAP WITH 3/4\"/>

- HIGH ALARM
- LAG-ON
- LEAD-ON
- LEAD-OFF/LAG OFF
- LOW ALARM



NO.	REVISION DESCRIPTION
1	
2	
3	
4	
5	

DESIGNED BY: \_\_\_\_\_  
 DRAWN BY: \_\_\_\_\_  
 APPROVED BY: \_\_\_\_\_  
 DATE: \_\_\_\_\_  
 SCALE: \_\_\_\_\_

LOS ARBOLES  
 LIFT STATION IMPROVEMENTS  
 ELECTRICAL IMPROVEMENTS

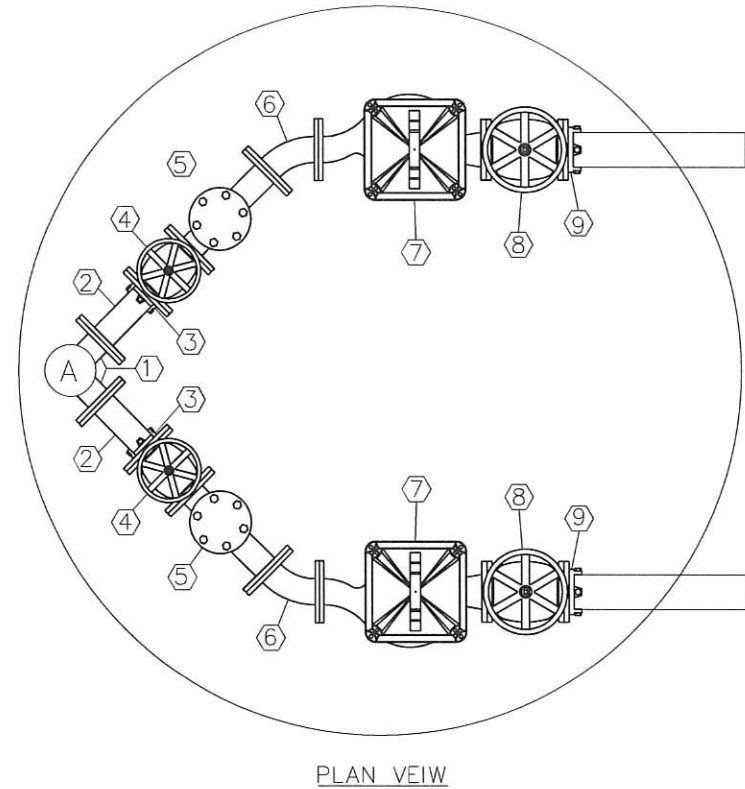
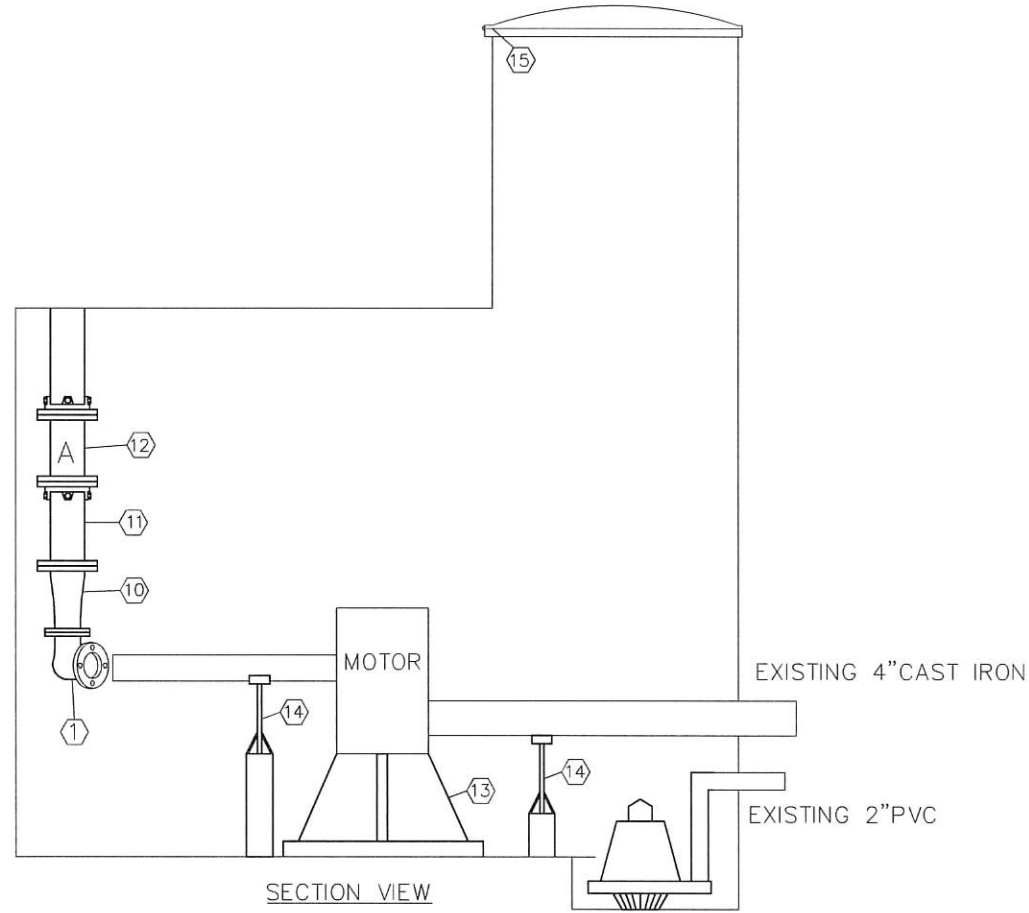


INCORPORATED COUNTY  
 OF LOS ALAMOS  
 DEPARTMENT OF PUBLIC  
 UTILITIES  
 1000 CENTRAL AVE., SUITE 130  
 LOS ALAMOS, NEW MEXICO 87544  
 (505) 662-8333 FAX: (505) 662-8005

SHEET  
**3**

Drawing File: L:\PROJECTS\JIFG 2023 LIFT STATION REHAB\DESIGN\DESIGN DOCUMENTS\LOS ARBOLES.DWG

Drawing File: L:\PROJECTS\IFG 2023 - LIFT STATION REHAB\03 - DESIGN\DESIGN DOCUMENT\LOS ARBOLES.DWG



TOP VIEW



DISCHARGE PIPE

- KEYED NOTES
1. 3" FL SIDE OUTLET 90° BEND(OWNER FURNISHED)
  2. 3" FL x PE DIP SPOOL
  3. 3" MEGA FLANGE(OWNER FURNISHED)
  4. 3" FL x FL PLUG VALVE(OWNER FURNISHED)
  5. 3" FL x FL CHECK VALVE(OWNER FURNISHED)
  6. 3" FL x FL 45° BEND
  7. NEW PUMP(OWNER FURNISHED)
  8. 4" FL x FL PLUG VALVE(OWNER FURNISHED)
  9. 4" MEGA FLANGE(OWNER FURNISHED)
  10. 4" x 3" FL x FL REDUCER
  11. 4" FL x PE DIP SPOOL
  12. 4" MJ SOLID SLEEVE W/MEGALUGS
  13. PUMP STAND/ ADJUSTABLE HEIGHT/ WELDED TO FLOOR
  14. PIPE SUPPORT
  15. REWELD EXISTING LID HINGE TO USABLE STATE

- GENERAL NOTES
1. ALL FLANGES ANSI 125 OR ANSI 150
  2. ALL FITTINGS AWWA C110 DUCTILE IRON
  3. ALL PIPE AND FITTINGS SHALL BE FIELD COATED
  4. LIFT STATION INTERIOR SHALL BE THOROUGHLY CLEANED AND FLOOR PRESSURE WASHED.
  5. FLOOR SHALL BE REPAINTED WITH NON-SKID EPOXY PAINT: PRIMER AND TWO COATS OF EPOXY PAINT. MATCH EXISTING COLOR
  6. ALL PENETRATIONS WHICH REMAIN UNUSED SHALL BE CUT AND PLUGGED NEATLY FLUSH WITH THE DRY WELL WALL. PLUG CONDUITS/PIPES WITH SILICON AND PLACE A 0.5 IN THICK HARD SET EPOXY CAP FLUSH WITH WALL
  7. ALL AREAS WHERE COATING IS REMOVED OR SCUFFED AS A PART OF THE DEMOLITION SHALL BE REPAINTED. MATCH EXISTING COLOR
  8. REMOVE AND DISPOSE OF ALL PIPING, FITTINGS, PUMPS, VALVES, CONTROL PANEL AND ELECTRICAL CONDUIT/WIRE BEING REPLACED
  9. CONTRACTOR SHALL COORDINATE INSTALLATION OF NEW PUMPS WITH DPU GWS OPERATIONS, WHO WILL SUPPORT WITH VACTOR WHILE PUMPS ARE DISABLED



NO.	REVISION DESCRIPTION
1	
2	
3	
4	
5	

DESIGNED BY:	
DRAWN BY:	
APPROVED BY:	
DATE:	
SCALE:	

**LOS ARBOLES**  
LIFT STATION IMPROVEMENTS  
MECHANICAL IMPROVEMENTS




INCORPORATED COUNTY  
OF LOS ALAMOS  
DEPARTMENT OF PUBLIC  
UTILITIES  
1000 CENTRAL AVE., SUITE 130  
LOS ALAMOS, NEW MEXICO 87544  
(505) 662-8333 FAX: (505) 662-8005




### Concertor N80-2750

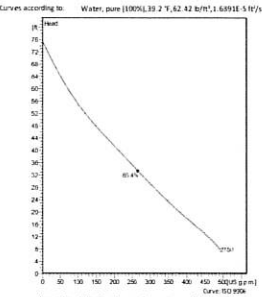
The most intelligent submersible pump on the market. Suitable for customers operating traditional submersible pump stations who want to benefit from variable pump performance, dry detection and pump cleaning, soft start, constant power and motor protection.



#### Technical specification



Curves according to: Water, pure [100%], 39.2 °F, 42.42 ft H<sub>2</sub>O / 1.689135 m H<sub>2</sub>O



Normal operating speed shown. Lower and/or lower performance than this data should be expected due to variable manufacturing tolerances. Please consult your local FLNG representative for performance parameters.

#### Configuration

Motor number: M6220 181 18-08-1A2-D 5.5hp	Installation type: 1 - Vertical/Permanent, Dry
Impeller diameter: 170 mm	Discharge diameter: 3 inch

#### Pump information

Impeller diameter: 170 mm	Impeller: Hard Iron™
Discharge diameter: 3 inch	
Inlet diameter: 110 mm	
Maximum operating speed: 800/2600 rpm	
Number of blades: 2	

#### Materials


Impeller diameter: 170 mm	Impeller: Hard Iron™
---------------------------	----------------------

Max. fluid temperature: 40 °C

Project: Block Xylem-20057451 Created by: Created on: 8/4/2023 Last update: 8/4/2023

### Concertor N80-2750

#### Technical specification



#### Motor - General

Motor number: M6220 181 18-08-1A2-D 5.5hp	Phases: 3~	Rated speed: 800/2600 rpm	Rated power: 5.5 hp
AEX approved No:	Insulation class: F	Rated current: 12.1 A	Type of Duty: S1
Frequency: 60 Hz	Rated voltage: 230 V	Motor efficiency class: IE4 according to IEC/TS 60034-30-2 Ed. 1	

#### Motor - Technical


Power factor - 1/2 Load: 0.95	Motor efficiency - 1/2 Load: 88.0 %	Nominal speed - 1/2 Load: 1150 rpm
Power factor - 3/4 Load: 0.95	Motor efficiency - 3/4 Load: 89.0 %	Nominal speed - 3/4 Load: 1035 rpm
Power factor - 1/2 Load: 0.95	Motor efficiency - 1/2 Load: 89.0 %	Nominal speed - 1/2 Load: 920 rpm

Starting current: 12.1 A

Project: Block Xylem-20057451 Created by: Created on: 8/4/2023 Last update: 8/4/2023

### Concertor N80-2750


#### Monitoring and Control equipment



Project: Block Xylem-20057451 Created by: Created on: 8/4/2023 Last update: 8/4/2023

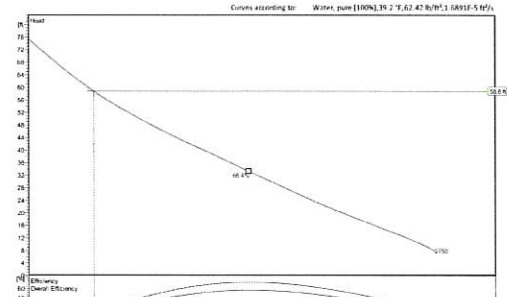
### Concertor N80-2750

#### Performance curve



Flow: 78.6 US g.p.m. Head: 58.8 ft

Curves according to: Water, pure [100%], 39.2 °F, 42.42 ft H<sub>2</sub>O / 1.689135 m H<sub>2</sub>O




Normal operating speed shown. Lower and/or lower performance than this data should be expected due to variable manufacturing tolerances. Please consult your local FLNG representative for performance parameters.

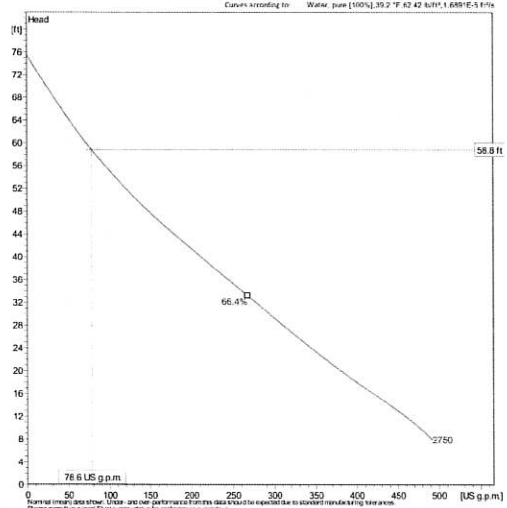
Project: Block Xylem-20057451 Created by: Created on: 8/4/2023 Last update: 8/4/2023

### Concertor N80-2750

#### Duty Analysis



Curves according to: Water, pure [100%], 39.2 °F, 42.42 ft H<sub>2</sub>O / 1.689135 m H<sub>2</sub>O




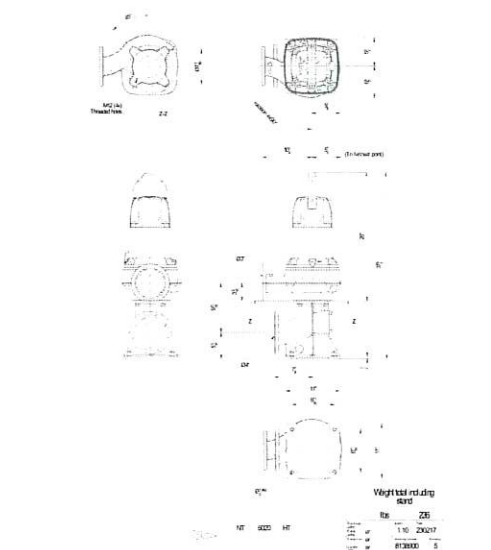
Operating characteristics

Point / System	Flow US g.p.m.	Head ft	Shaft power hp	Flow US g.p.m.	Head ft	Shaft power hp	High lift	Specific energy kWh/m <sup>3</sup>	MPH/m
78.6 US g.p.m.	78.6	58.8		78.6	58.8				
66.4	66.4			66.4					
2750				2750					

Project: Block Xylem-20057451 Created by: Created on: 8/4/2023 Last update: 8/4/2023

### Concertor N80-2750

#### Dimensional drawing

Project: Block Xylem-20057451 Created by: Created on: 8/4/2023 Last update: 8/4/2023



NO.	REVISION DESCRIPTION
1	
2	
3	
4	
5	

DESIGNED BY: \_\_\_\_\_  
 DRAWN BY: \_\_\_\_\_  
 APPROVED BY: \_\_\_\_\_  
 DATE: \_\_\_\_\_  
 SCALE: \_\_\_\_\_

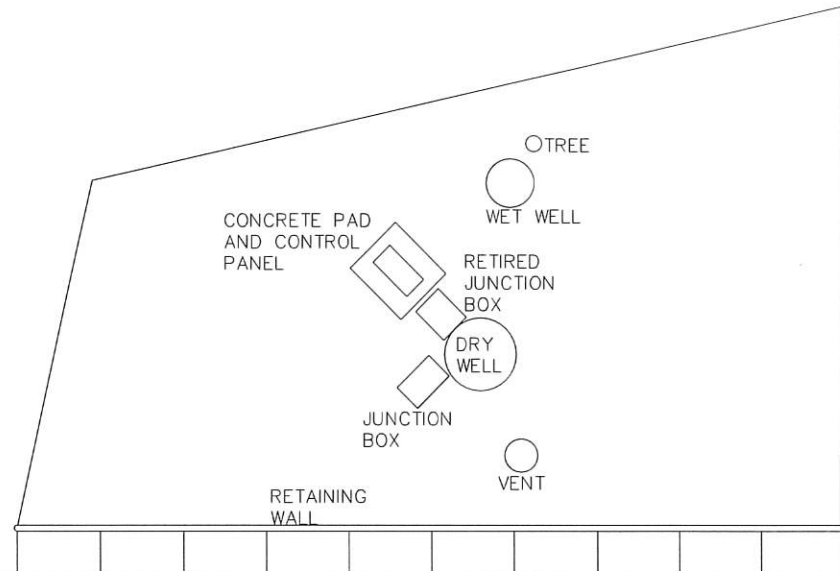
**LOS ARBOLES**  
**LIFT STATION IMPROVEMENTS**  
**PUMP SPECIFICATIONS**



INCORPORATED COUNTY  
 OF LOS ALAMOS  
 DEPARTMENT OF PUBLIC  
 UTILITIES  
 1000 CENTRAL AVE., SUITE 130  
 LOS ALAMOS, NEW MEXICO 87544  
 (505) 662-8333 FAX: (505) 662-8005

Drawing File: L:\PROJECTS\IFG 2023 LIFT STATION REHAB\03\_DESIGN\DESIGN DOCUMENT\NORTH ROAD.DWG

EXISTING CONDITIONS

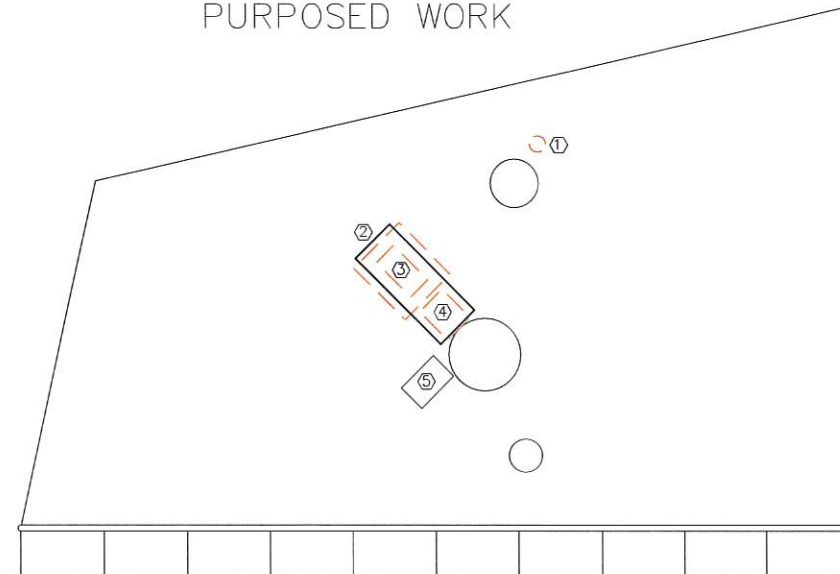


NORTH ROAD

MEDIAN



PURPOSED WORK



GENERAL NOTES

1. RETURN LANDSCAPING TO EXISTING CONDITIONS OR BETTER
2. LAC LINEMEN TO INSTALL TRANSFORMER AND REMOVAL OF EXISTING TRANSFORMER, CONTRACTOR TO COORDINATE WITH LINEMEN FOR ALL ELECTRICAL INSTALLATIONS
3. DURING SEWAGE OUTAGE, CONTRACTOR MUST MANUALLY BY-PASS FORCE MAIN WITH PUMP FROM WET WELL

KEYED NOTES

- ① REMOVE EXISTING TREE FROM THE ROOTS HYDRO EXCAVATION OR HAND DIGGING IS REQUIRED.
- ② INSTALL 5'X2' CONCRETE PAD WITH CONTROL PANEL AS PER SHEET 3, ROUTE NEW CONDUIT INTO PAD
- ③ REMOVE EXISTING CONCRETE PAD AND CONTROL PANEL
- ④ REMOVE EXISTING DEFUNCT JUNCTION BOX; REFINISH DRY WELL WALL FROM WELDING MARKS
- ⑤ RUN NEW POWER LINE TO EXIST LIVE JUNCTION BOX



NO.	REVISION DESCRIPTION
1	
2	
3	
4	
5	

DESIGNED BY:	
DRAWN BY:	
APPROVED BY:	
DATE:	
SCALE:	

**NORTH ROAD  
LIFT STATION IMPROVEMENTS  
SITE PLAN**

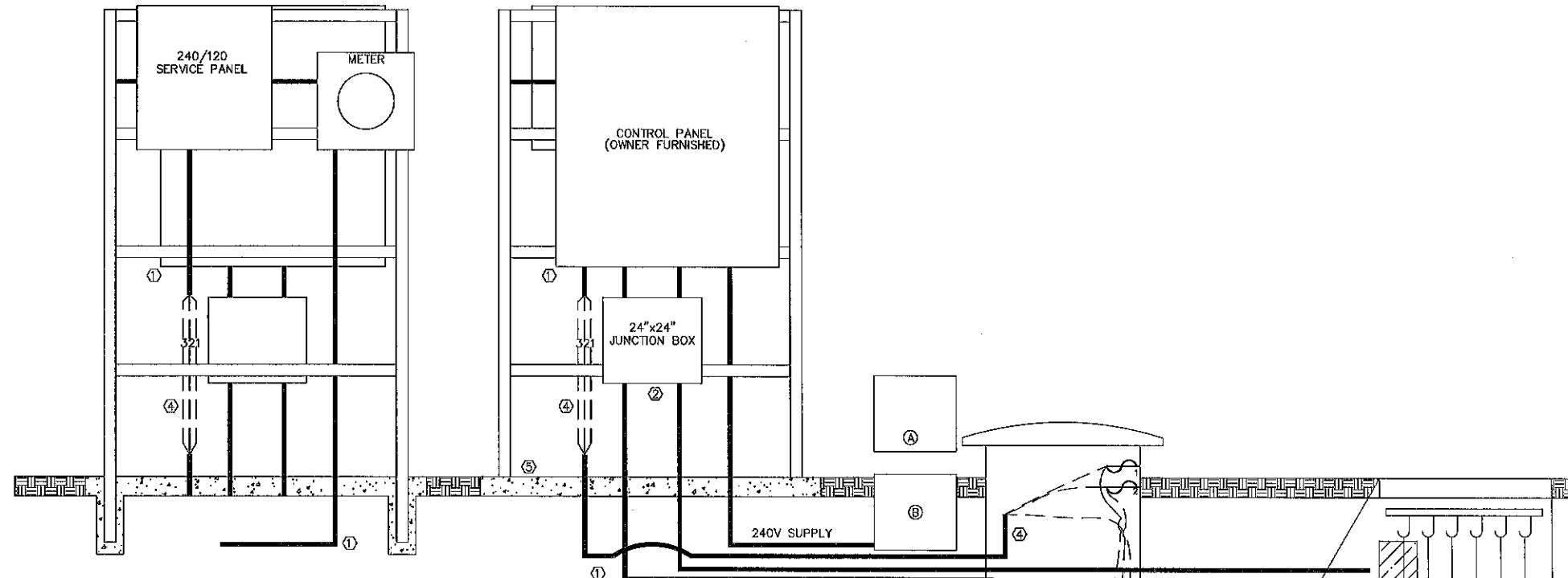


INCORPORATED COUNTY  
OF LOS ALAMOS  
DEPARTMENT OF PUBLIC  
UTILITIES  
1000 CENTRAL AVE., SUITE 130  
LOS ALAMOS, NEW MEXICO 87544  
(505) 662-8333 FAX: (505) 662-8005

SHEET  
**6**



EXISTING ELECTRICAL/CONTROLS

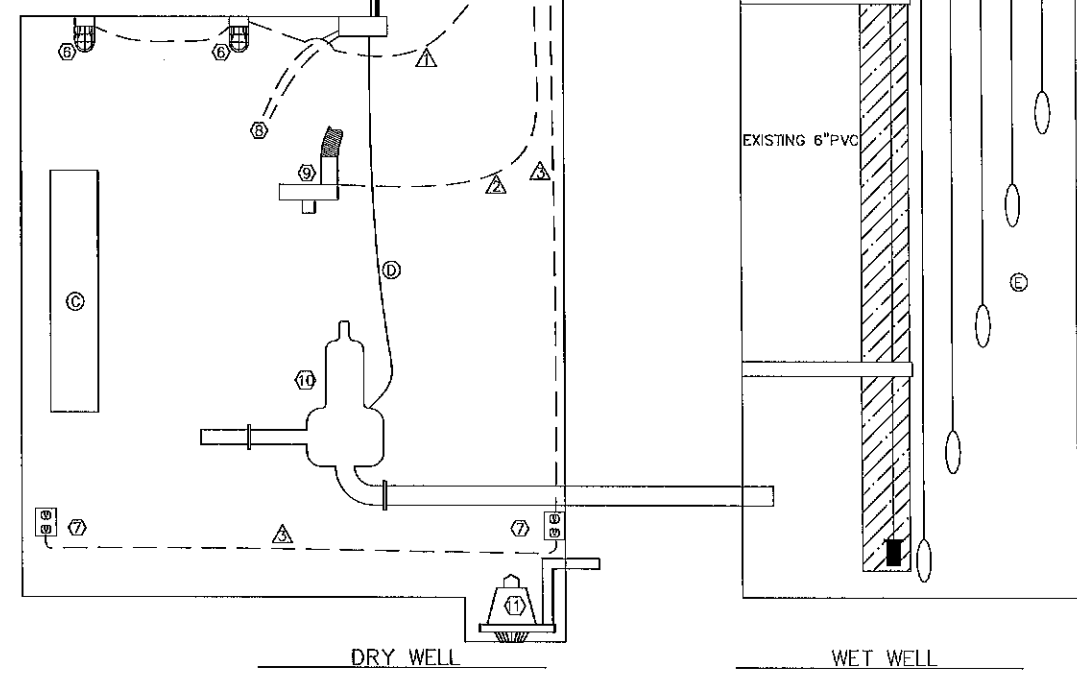


EQUIPMENT SCHEDULE			
ITEM	MAKE	MODEL	GRAINGER CATALOG #
SUMP PUMP	GOULDS	110VAC/35 GPM @ 10'TDH	462D15
LED LIGHT FIXTURE	LITHONIA LIGHTING	OLVTCM	26X701
EXHAUST FAN	FANTECH	FG 4XL	15W687
FLEXIBLE DUCT	WESTAFLEX	2505 (15 FEET)	3C591

- EXISTING CONDITIONS**
- (A) EXISTING ABANDONED 240V STEEL JUNCTION BOX. VERIFY POWER IS DISCONNECTED THEN REMOVE AND DISPOSE.
  - (B) EXISTING POWER JUNCTION BOX WHERE TO BE USED FOR POWER SUPPLY.
  - (C) EXISTING ABANDONED CONTROL PANEL. VERIFY POWER IS DISCONNECTED THEN REMOVE AND DISPOSE.
  - (D) EXISTING PUMP CONTROL WIRING IN FLEX CONDUIT TO BE REMOVED (2--EACH).
  - (E) EXISTING FLOATS AND TRANSDUCER IN EXISTING MANHOLE TO BE REMOVED. FLOATS TO BE REPLACED.

- NEW CONSTRUCTION**
- (1) INSTALL NEW 1-1/2\"/>

- GENERAL NOTES**
1. NEW PUMPS, VALVES AND DISCHARGE PIPING WILL BE REPLACED BY OTHERS. WORK SHALL BE COORDINATED WITH PUMP INSTALLER AND LOS ALAMOS COUNTY TO EXPEDITE THE TRANSITION FROM THE OLD PUMPS TO NEW PUMPS.
  2. ALL ELECTRIC WORK SHALL COMPLY WITH ALL APPLICABLE ELECTRIC CODES, CURRENT EDITIONS.
  3. ALL NEW CONDUCTORS IN DRY-WELL SHALL BE IN RIGID OR PVC CONDUIT.
  4. ABANDONED CONTROL PANEL, WIRING, SWITCHES, RECEPTACLES AND OTHER AUXILIARY EQUIPMENT ASSOCIATED WITH THE ABANDONED ELECTRIC SYSTEM SHALL BE REMOVED AND DISPOSED OF.
  5. ANY CONDUITS OR DRY-WELL PENETRATIONS THAT REMAIN ONCE ABANDONED EQUIPMENT IS REMOVED SHALL BE SEALED. SEAL PENETRATIONS WITH SILICON AND CAP WITH 1/2\"/>



HIGH ALARM  
LAG-ON  
LEAD-ON  
LEAD-OFF/LAG OFF  
LOW ALARM

— EXISTING CONDUIT  
- - - NEW CIRCUIT  
— EXISTING CONDUCTORS

LEGEND



NO.	REVISION DESCRIPTION
1	
2	
3	
4	
5	

DESIGNED BY: \_\_\_\_\_  
DRAWN BY: \_\_\_\_\_  
APPROVED BY: \_\_\_\_\_  
DATE: \_\_\_\_\_  
SCALE: \_\_\_\_\_

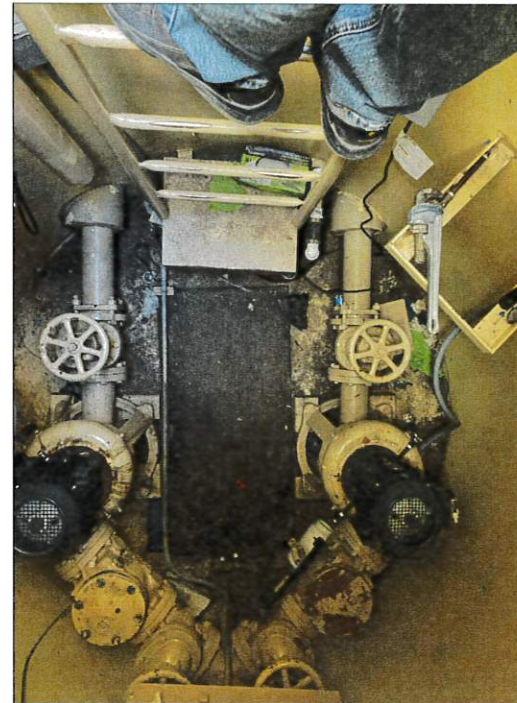
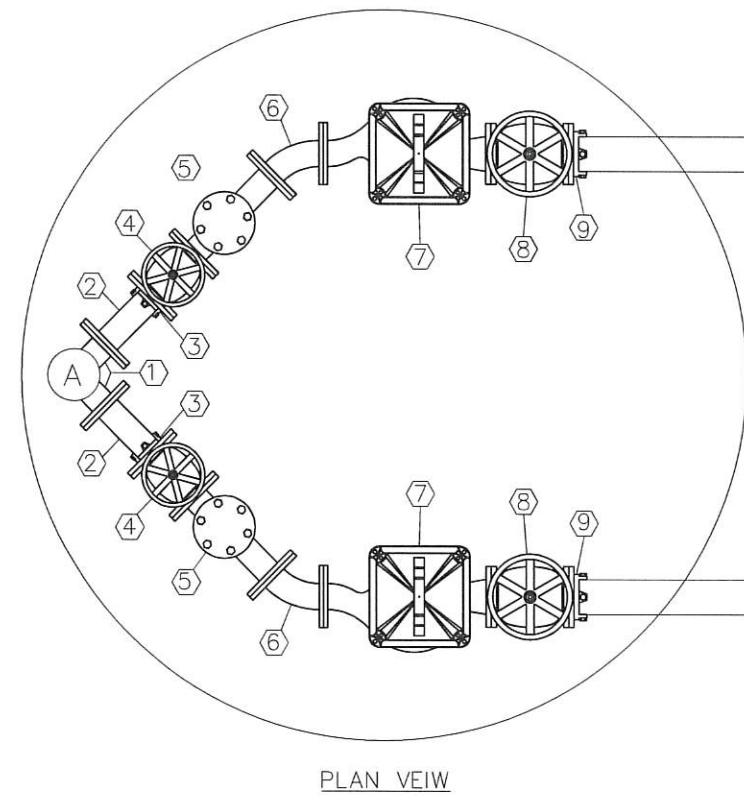
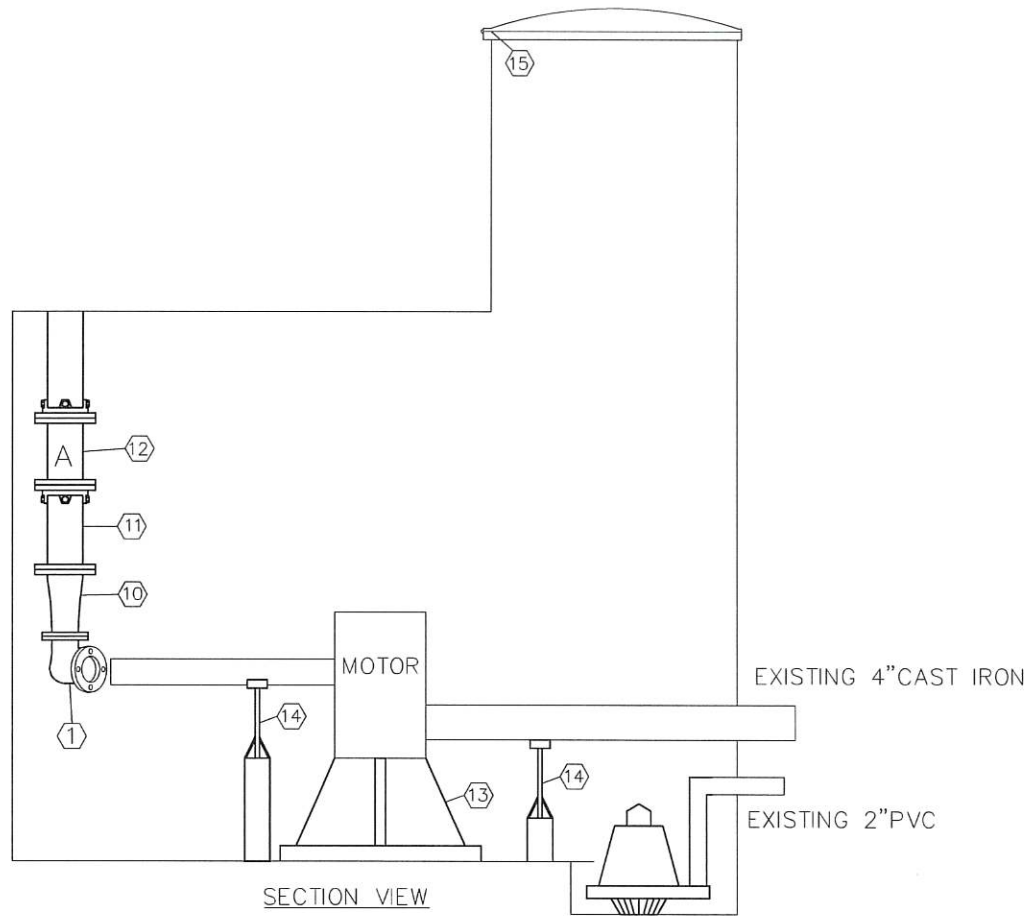
**NORTH ROAD  
LIFT STATION IMPROVEMENTS  
ELECTRICAL IMPROVEMENTS**



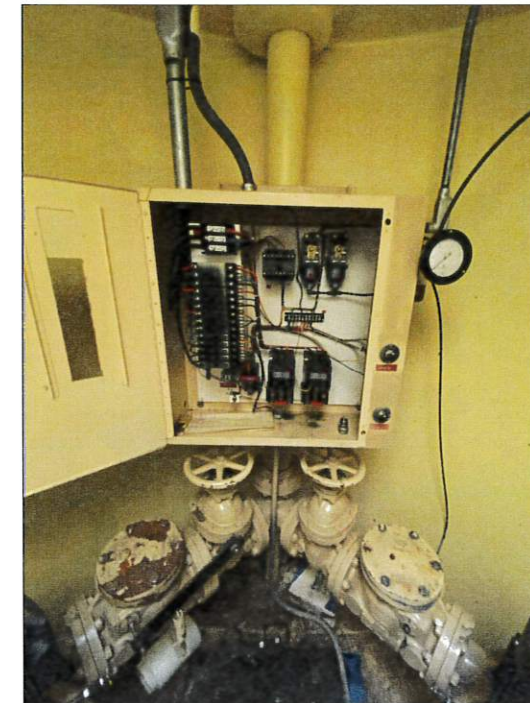
INCORPORATED COUNTY  
OF LOS ALAMOS  
DEPARTMENT OF PUBLIC  
UTILITIES  
1000 CENTRAL AVE., SUITE 130  
LOS ALAMOS, NEW MEXICO 87544  
(505) 662-8333 FAX: (505) 662-8005

SHEET  
**7**

Drawing File: L:\PROJECTS\IFG 2023 LIFT STATION REHAB\03 DESIGN\DESIGN DOCUMENT\NORTH ROAD.DWG



TOP VIEW



DISCHARGE PIPE

- KEYED NOTES
1. 3" FL SIDE OUTLET 90° BEND (OWNER FURNISHED)
  2. 3" FL x PE DIP SPOOL
  3. 3" MEGA FLANGE (OWNER FURNISHED)
  4. 3" FL x FL PLUG VALVE (OWNER FURNISHED)
  5. 3" FL x FL CHECK VALVE (OWNER FURNISHED)
  6. 3" FL x FL 45° BEND
  7. NEW PUMP (OWNER FURNISHED)
  8. 4" FL x FL PLUG VALVE (OWNER FURNISHED)
  9. 4" MEGA FLANGE (OWNER FURNISHED)
  10. 4" x 3" FL x FL REDUCER
  11. 4" FL x PE DIP SPOOL
  12. 4" MJ SOLID SLEEVE W/MEGALUGS
  13. PUMP STAND/ ADJUSTABLE HEIGHT/ WELDED TO FLOOR
  14. PIPE SUPPORT
  15. REWELD EXISTING LID HINGE TO USABLE STATE

- GENERAL NOTES
1. ALL FLANGES ANSI 125 OR ANSI 150
  2. ALL FITTINGS AWWA C110 DUCTILE IRON
  3. ALL PIPE AND FITTINGS SHALL BE FIELD COATED
  4. LIFT STATION INTERIOR SHALL BE THOROUGHLY CLEANED AND FLOOR PRESSURE WASHED.
  5. FLOOR SHALL BE REPAINTED WITH NON-SKID EPOXY PAINT: PRIMER AND TWO COATS OF EPOXY PAINT. MATCH EXISTING COLOR
  6. ALL PENETRATIONS WHICH REMAIN UNUSED SHALL BE CUT AND PLUGGED NEATLY FLUSH WITH THE DRY WELL WALL. PLUG CONDUITS/PIPES WITH SILICON AND PLACE A 0.5 IN THICK HARD SET EPOXY CAP FLUSH WITH WALL
  7. ALL AREAS WHERE COATING IS REMOVED OR SCUFFED AS A PART OF THE DEMOLITION SHALL BE REPAINTED. MATCH EXISTING COLOR
  8. REMOVE AND DISPOSE OF ALL PIPING, FITTINGS, PUMPS, VALVES, CONTROL PANEL AND ELECTRICAL CONDUIT/WIRE BEING REPLACED
  9. CONTRACTOR SHALL COORDINATE INSTALLATION OF NEW PUMPS WITH DPU GWS OPERATIONS, WHO WILL SUPPORT WITH VACTOR WHILE PUMPS ARE DISABLED



NO.	REVISION DESCRIPTION
1	
2	
3	
4	
5	

DESIGNED BY:	
DRAWN BY:	
APPROVED BY:	
DATE:	
SCALE:	

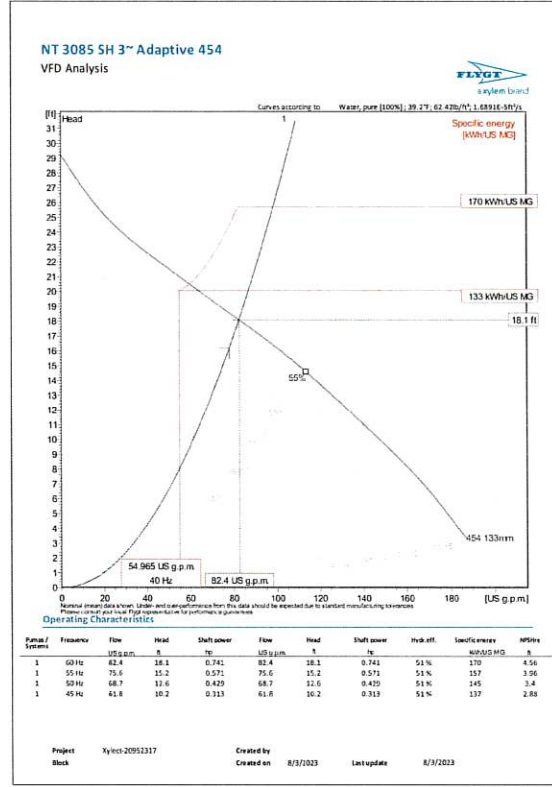
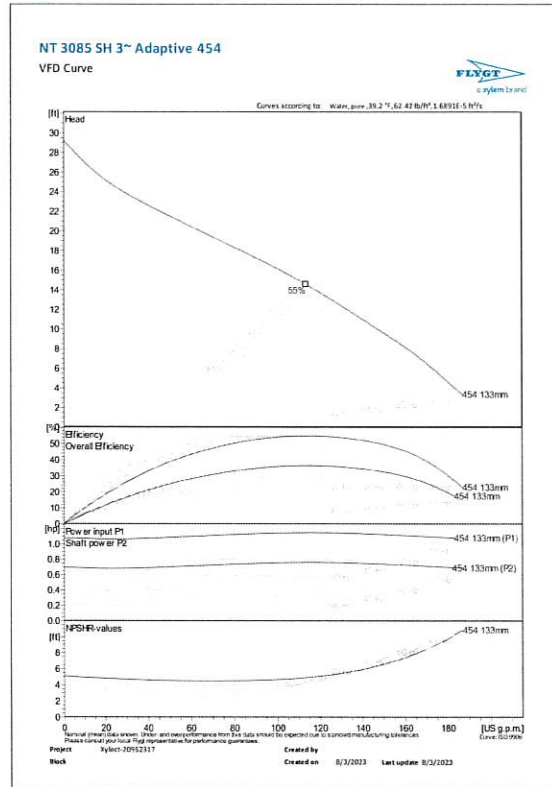
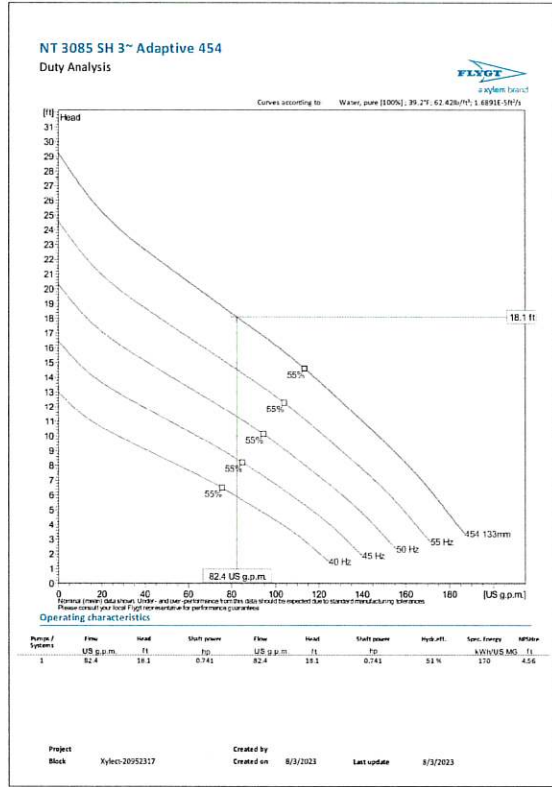
**NORTH ROAD  
LIFT STATION IMPROVEMENTS**

MECHANICAL IMPROVEMENTS



INCORPORATED COUNTY  
OF LOS ALAMOS  
DEPARTMENT OF PUBLIC  
UTILITIES  
1000 CENTRAL AVE., SUITE 130  
LOS ALAMOS, NEW MEXICO 87544  
(505) 662-8333 FAX: (505) 662-8005





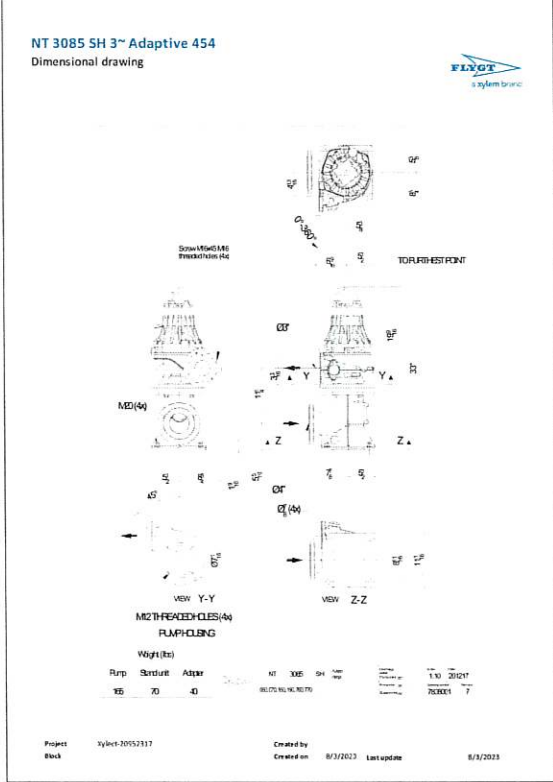
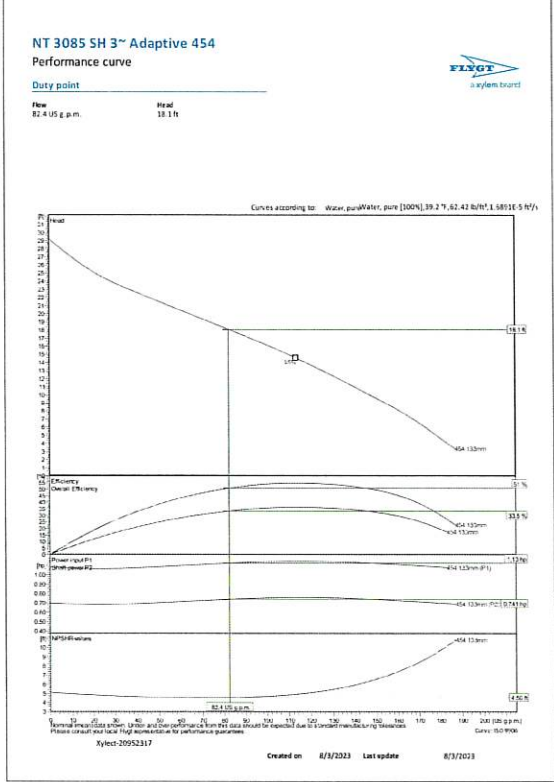
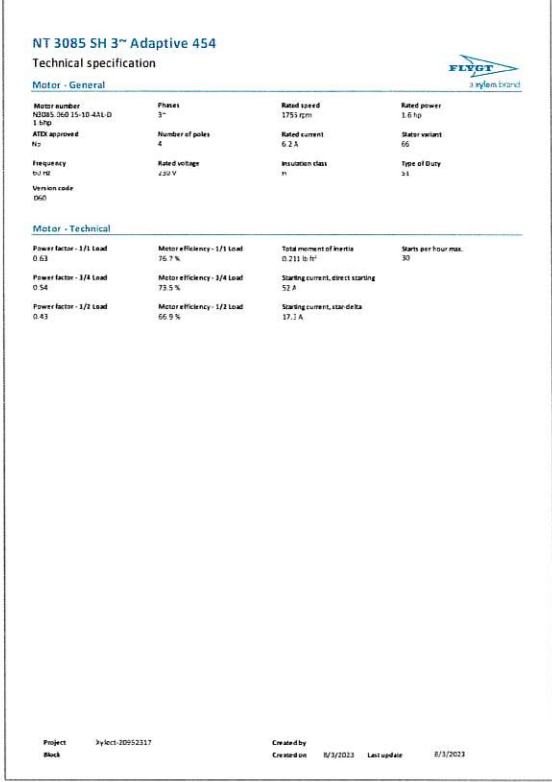
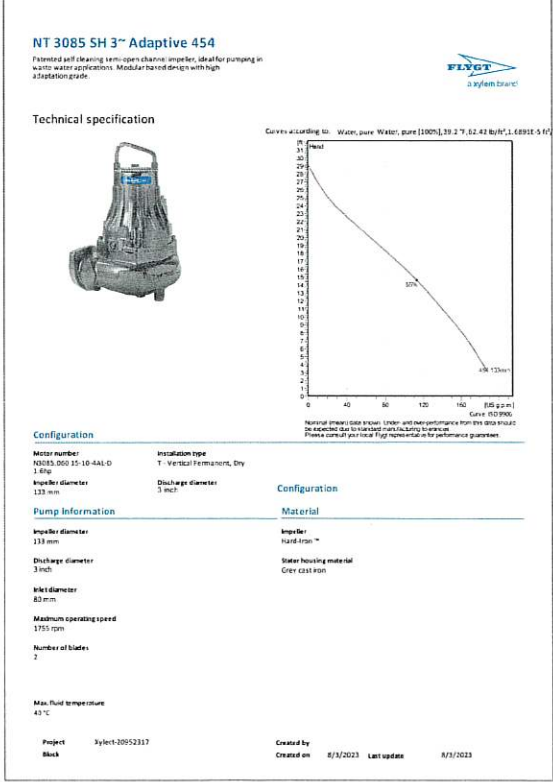
NO.	REVISION DESCRIPTION
1	
2	
3	
4	
5	

DESIGNED BY: \_\_\_\_\_  
 DRAWN BY: \_\_\_\_\_  
 APPROVED BY: \_\_\_\_\_  
 DATE: \_\_\_\_\_  
 SCALE: \_\_\_\_\_

LOS ARBOLES  
LIFT STATION IMPROVEMENTS  
PUMP INFORMATION

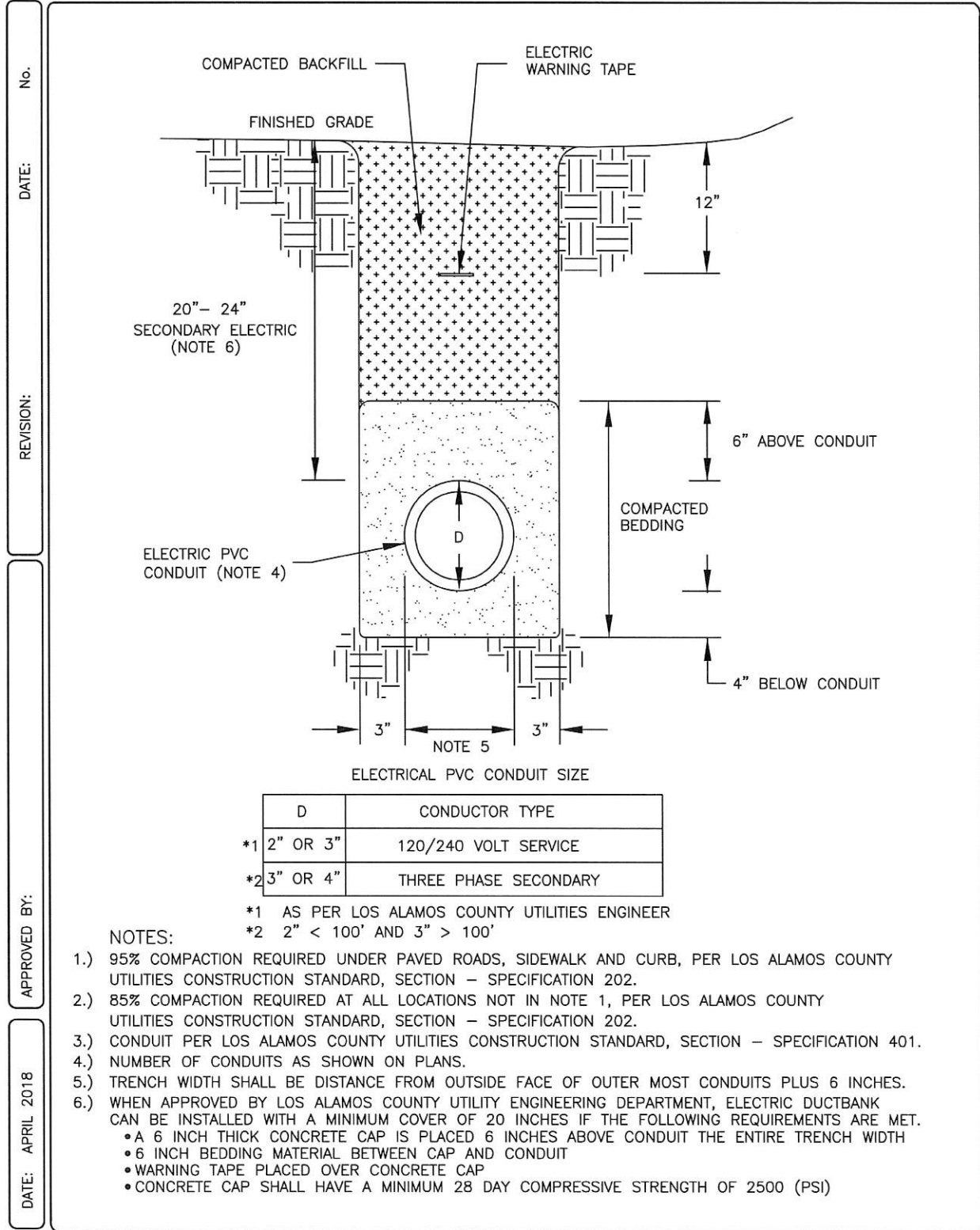


INCORPORATED COUNTY  
OF LOS ALAMOS  
DEPARTMENT OF PUBLIC  
UTILITIES  
1000 CENTRAL AVE., SUITE 130  
LOS ALAMOS, NEW MEXICO 87544  
(505) 662-8333 FAX: (505) 662-8005



Drawing File: L:\PROJECTS\IFG 2023 LIFT STATION REHAB\03\_DESIGN\DESIGN DOCUMENT\LOS ARBOLES.DWG

<p><b>LOS ALAMOS</b> Department of Public Utilities <small>Electric, Gas, Water, and Wastewater Services</small></p>	UTILITY CONSTRUCTION STANDARDS - ELECTRIC	SECTION 4000
	<b>ELECTRIC SECONDARY TRENCH DETAIL</b>	4030



NO.	REVISION DESCRIPTION
1	
2	
3	
4	
5	

DESIGNED BY: \_\_\_\_\_  
 DRAWN BY: \_\_\_\_\_  
 APPROVED BY: \_\_\_\_\_  
 DATE: \_\_\_\_\_  
 SCALE: \_\_\_\_\_

LOS ARBOLES  
LIFT STATION IMPROVEMENTS  
TRENCHING STANDARD



INCORPORATED COUNTY  
OF LOS ALAMOS  
DEPARTMENT OF PUBLIC  
UTILITIES  
1000 CENTRAL AVE., SUITE 130  
LOS ALAMOS, NEW MEXICO 87544  
(505) 662-8333 FAX: (505) 662-8005