

EXHIBIT A

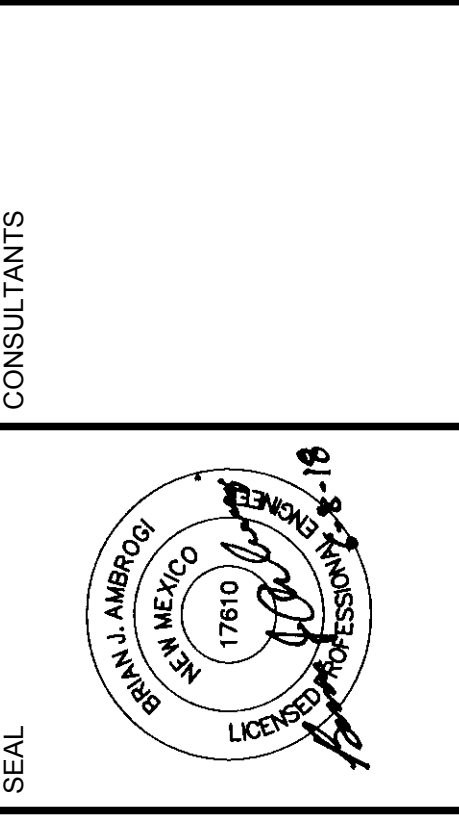
Attachment E - Construction and Waterline Easements



GENERAL NOTES:

1. ALL EXISTING AND NEW UNDERGROUND UTILITIES SHOWN ON THIS PLAN ARE APPROXIMATE LOCATIONS. CONTRACTOR SHALL VERIFY LOCATION OF ALL UNDERGROUND UTILITIES BEFORE COMMENCING WORK.
2. MINIMUM 1.5' CLEARANCE FOR CROSSINGS BETWEEN PIPELINE AND EXISTING UTILITIES, OR USE LEANFILL.
3. PROTECT EXISTING FENCING AT TANK FROM DAMAGE, UNLESS OTHERWISE NOTED ON PLAN.
4. CONTRACTOR TO PROVIDE EXCAVATION PLAN FOR RELEASE TO LOS ALAMOS. BACKFILL SHALL MEET SELECT FILL REQUIREMENTS.
5. ALL SELECT FILL SHALL MEET LOS ALAMOS COUNTY STD REQUIREMENTS AND THE REQUIREMENTS OF THE GEOTECHNICAL INVESTIGATION AS CONTAINED IN THE CONTRACT DOCUMENTS.
6. ALL BACKFILL AROUND THE BOOSTER STATION SHALL BE COMPACTED TO A MINIMUM 95% COMPACTION PER ASTM D 1557. THE 6-FT NEAREST TO THE BUILDING MEET STRUCTURAL FILL REQUIREMENTS.
7. BEST AVAILABLE INFORMATION ON SUB-SURFACE CONDITIONS IS PROVIDED IN THE GEOTECHNICAL REPORT. CONTRACTOR SHALL VERIFY EXISTING SUBSURFACE CONDITIONS PRIOR TO CONSTRUCTION. SHOULD DIFFERING SITE CONDITIONS EXIST THE CONTRACTOR SHALL NOTIFY THE OWNER/ENGINEER IMMEDIATELY PRIOR TO PROCEEDING WITH CONSTRUCTION.
8. ALL BURIED PIPE FLANGES SHALL HAVE STAINLESS STEEL BOLTS, COATED WITH COAL TAR EPOXY.

WILSON & COMPANY
 2600 THE AMERICAN RD. SE SUITE 100
 RIO RANCHO, NM 87124
 PHONE: 505-898-8021
 FAX: 505-898-8501
 www.wilsonco.com



PROJECT NAME
**LOS ALAMOS COUNTY
 CAMP MAY
 WATER LINE**

REV.	DATE	DESCRIPTION	BY

PROJECT NO: 1580021400
 DESIGNED BY: BJA
 DRAWN BY: STAFF
 CHECKED BY: BJA
 DATE: JUNE 2018

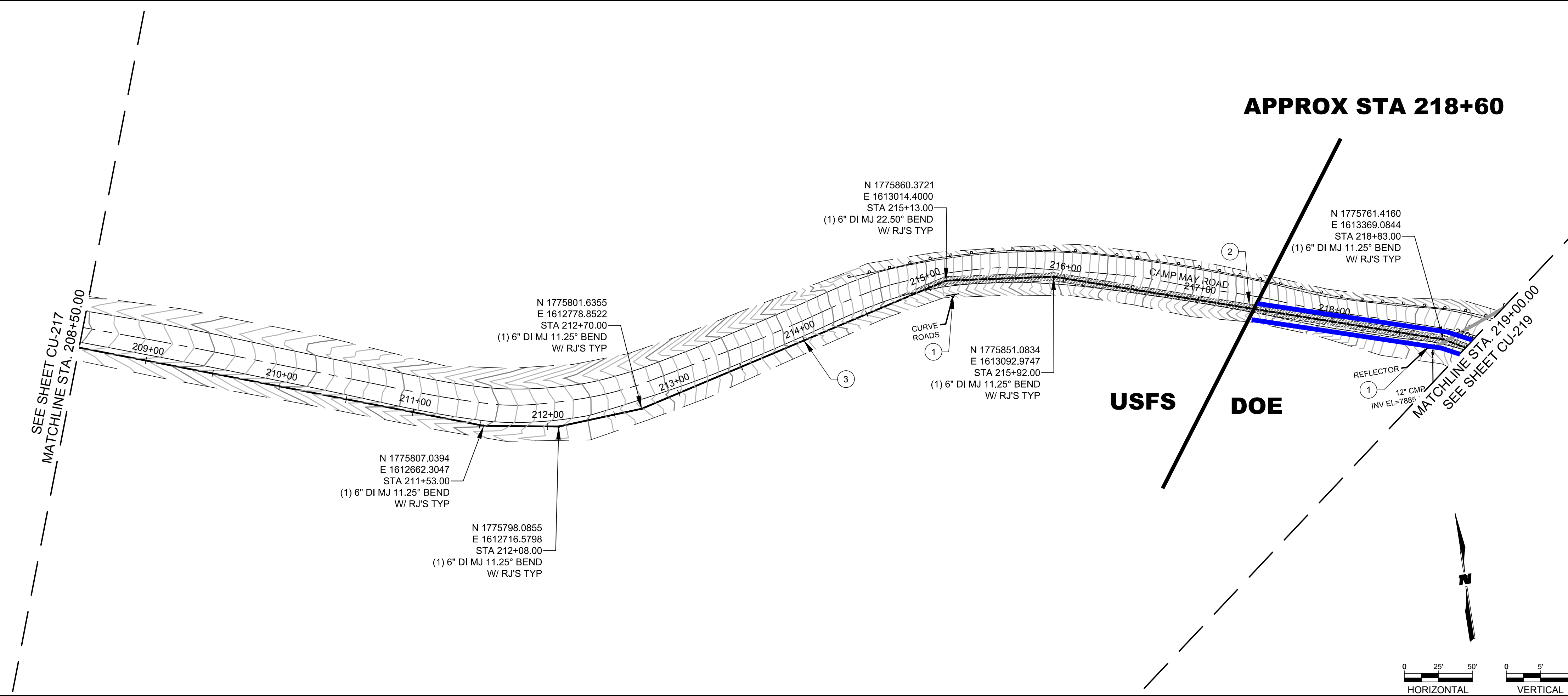
SHEET TITLE
**OVERALL SHEET
 LAYOUT PLAN**

SHEET NO:
G-101

6/8/2018 M:\MSD\15-600-214-002_Disciplines_SHEETS8_sheets_utilities\01_GEN\156021400_G-101.dwg

A1 OVERALL SITE PLAN

6/8/2018 M:\MSD\15-600-214-00\2_Disciplines\ SHEETS\8_sheets - utilities\02_CIVIL\IP&P\15621400_PP-02.dwg



GENERAL NOTES

1. ALL UNDERGROUND UTILITIES SHOWN ON THIS PLAN ARE APPROXIMATE LOCATIONS. CONTRACTOR SHALL VERIFY LOCATION OF ALL UNDERGROUND UTILITIES BEFORE COMMENCING WORK.
2. MINIMUM 1.5 FT CLEARANCE BETWEEN PIPELINE AND EXISTING UTILITIES, OR USE LEAN FILL ASTM D-1557.
3. PROTECT EXISTING TREES AND EXISTING FENCING FROM DAMAGE, UNLESS OTHERWISE NOTED ON PLAN.
4. CONTRACTOR SHALL COORDINATE WITH THE COUNTY TRAFFIC OPERATIONS DEPARTMENT IN THE EVENT OF ANY CONDUIT IMPACTS.
5. RESTORATION OF RIGHT OF WAY: UPON COMPLETION OF THE PIPELINE INSTALLATION WORK, ALL RUBBISH, EXCESS MATERIALS, TEMPORARY STRUCTURES AND EQUIPMENT ARE TO BE REMOVED AND THE HIGHWAY'S RIGHT OF WAY CLEANED AND RESTORED TO THE SATISFACTION OF THE CHIEF ENGINEER OR HIS AUTHORIZED REPRESENTATIVE. DISTURBED AREAS SHALL BE SEEDED OR OTHERWISE PROTECTED TO CONTROL EROSION AS SPECIFIED BY NMDOT.
6. WHERE CROSSING UNDER OVERHEAD UTILITIES, CONTRACTOR SHALL MARK UTILITIES WITH RED MARKERS AND PROTECT OVERHEAD UTILITIES FROM DAMAGE DURING CONSTRUCTION.
7. AIR/VACUUM VAULTS TO BE LOCATED A MINIMUM OF 10' FROM EDGE OF PAVEMENT. SEE DTL ON SHT CU-502.
8. CONTRACTOR SHALL REMOVE AND RESET ALL EXISTING ROADWAY SIGNS THAT ARE DISTURBED DURING CONSTRUCTION.
9. ALL STORM DRAIN CROSSINGS ARE TO BE RESTORED TO ORIGINAL CONDITION OR BETTER. ANY STORM DRAIN CROSSINGS DAMAGED DURING CONSTRUCTION ARE TO BE REPLACED BY THE CONTRACTOR, AND ARE INCIDENTAL TO THE CONTRACT.

KEYNOTES

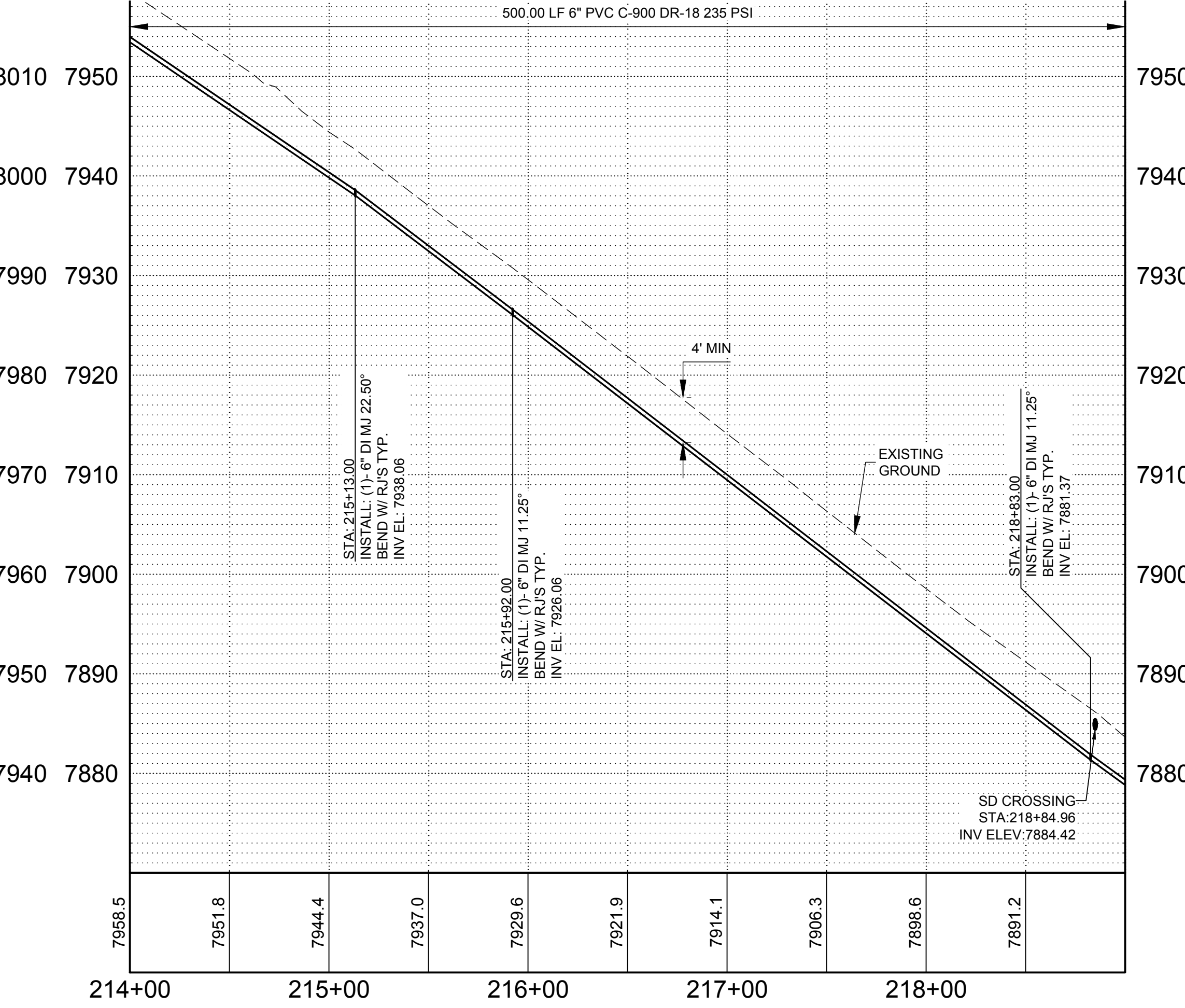
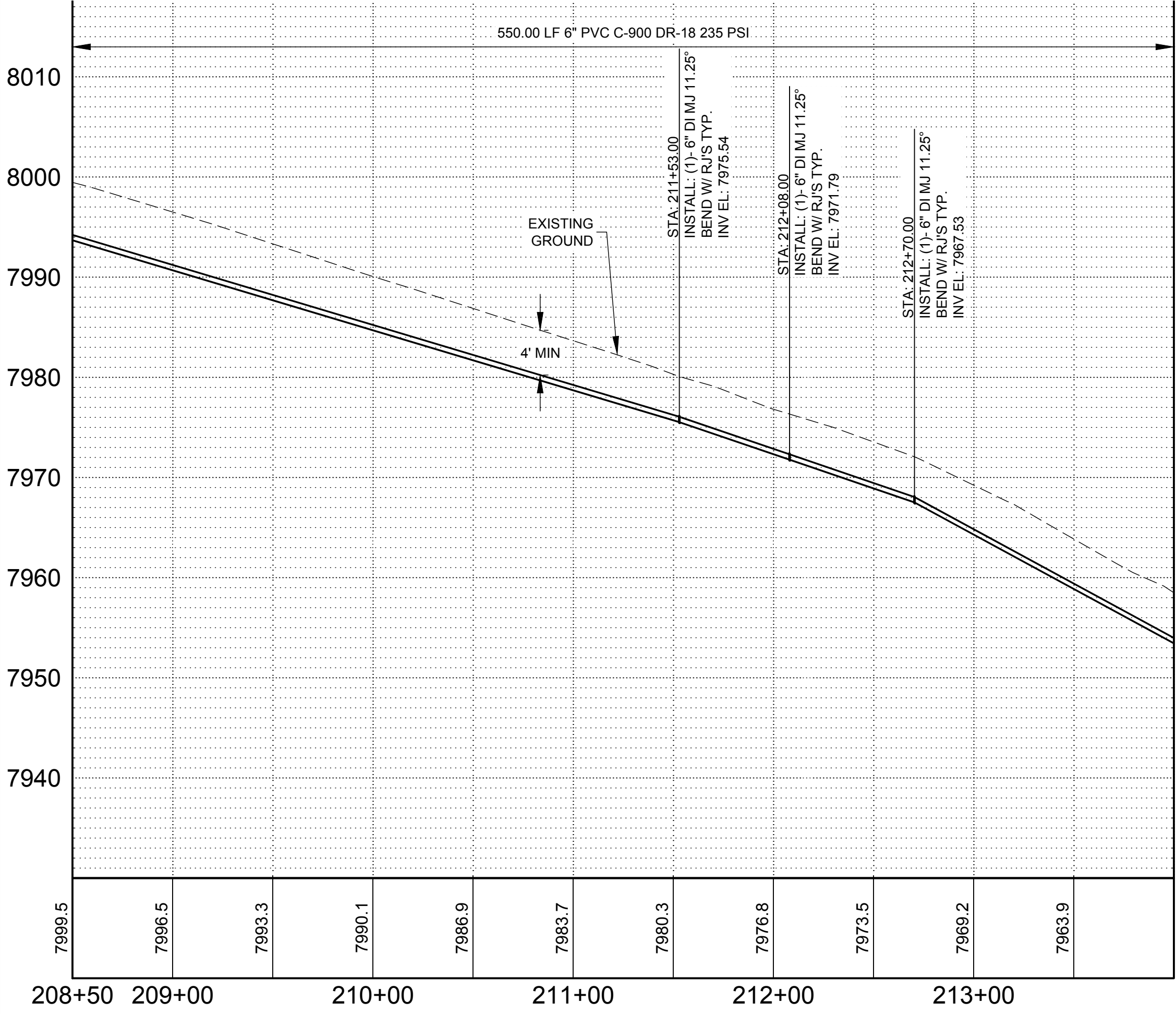
- ① EXISTING SIGN OR REFLECTOR, TO BE REMOVED AND RESET AS NEEDED.
- ② LIMITS OF ASPHALT PAVEMENT CUT
- ③ FIBER OPTIC PULL BOX SEE DTL SHT E-502
- ④ POWER CONDUIT STUB OUT SEE DTL SHT E-502

WILSON & COMPANY
 2600 THE AMERICAN RD. SE SUITE 100
 RIO RANCHO, NM 87124
 PHONE: 505-898-8021
 FAX: 505-898-8501
 www.wilsonco.com

CONSULTANTS

SEAL

PROJECT NAME
**LOS ALAMOS COUNTY
 CAMP MAY
 WATER LINE**



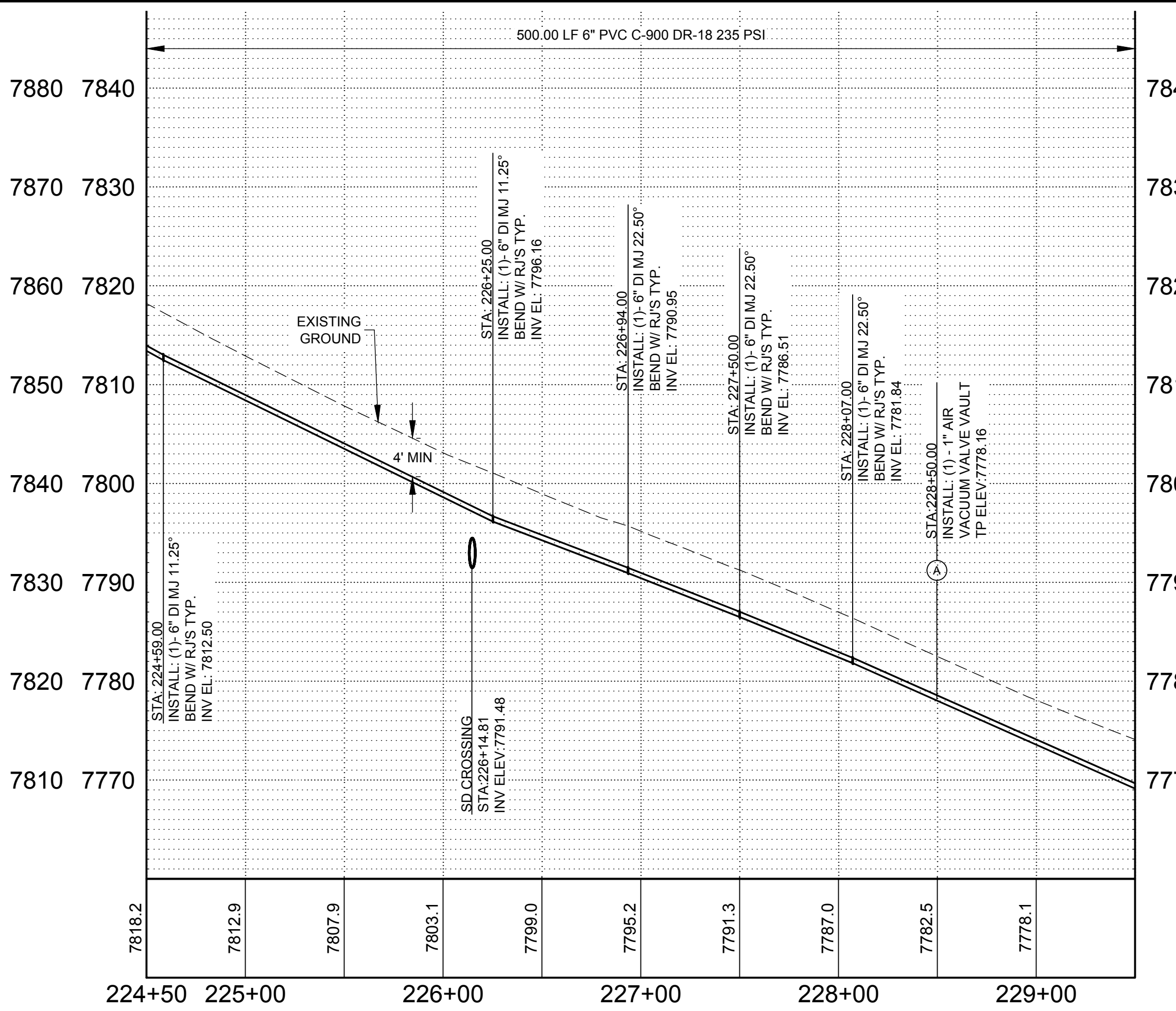
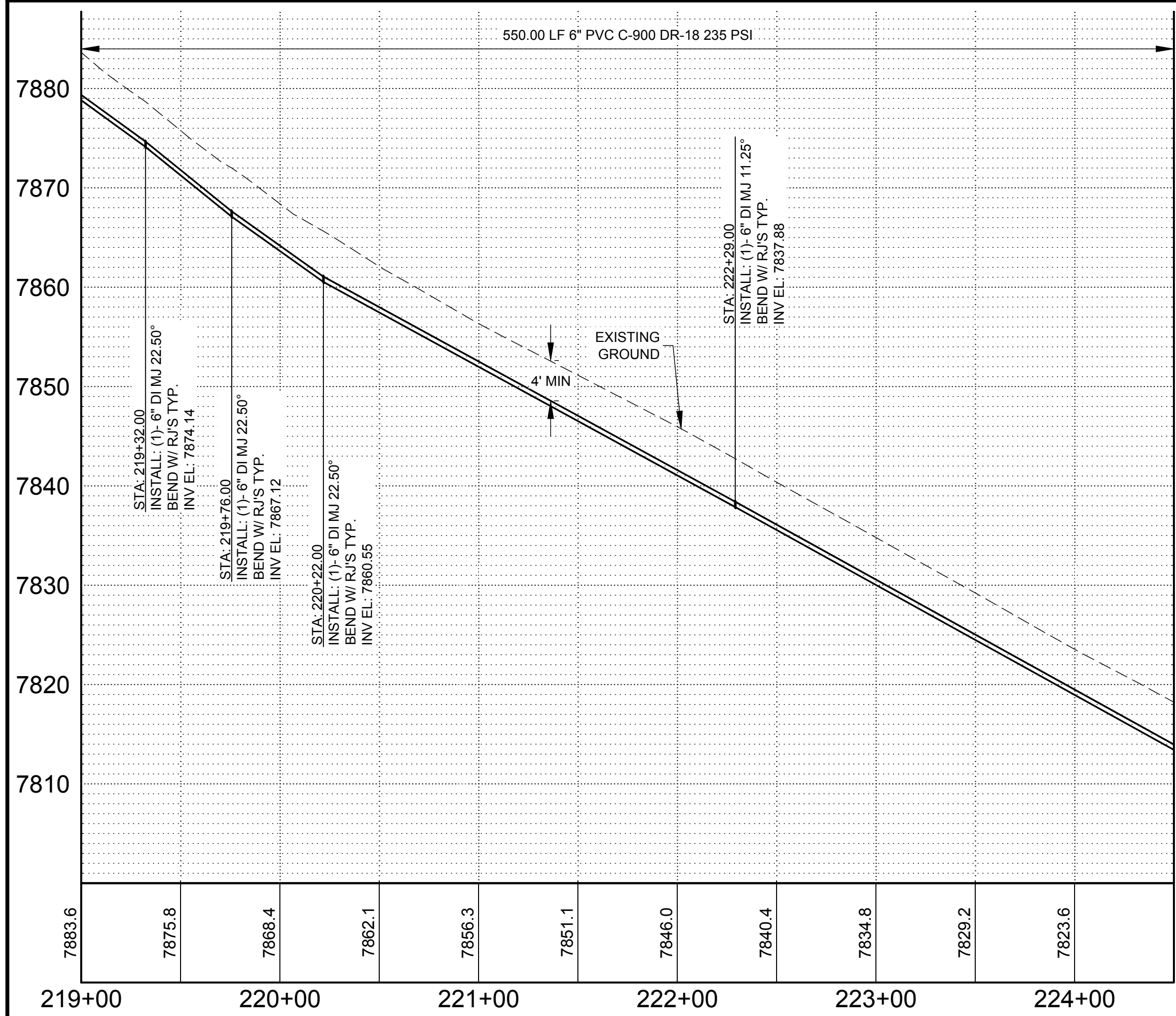
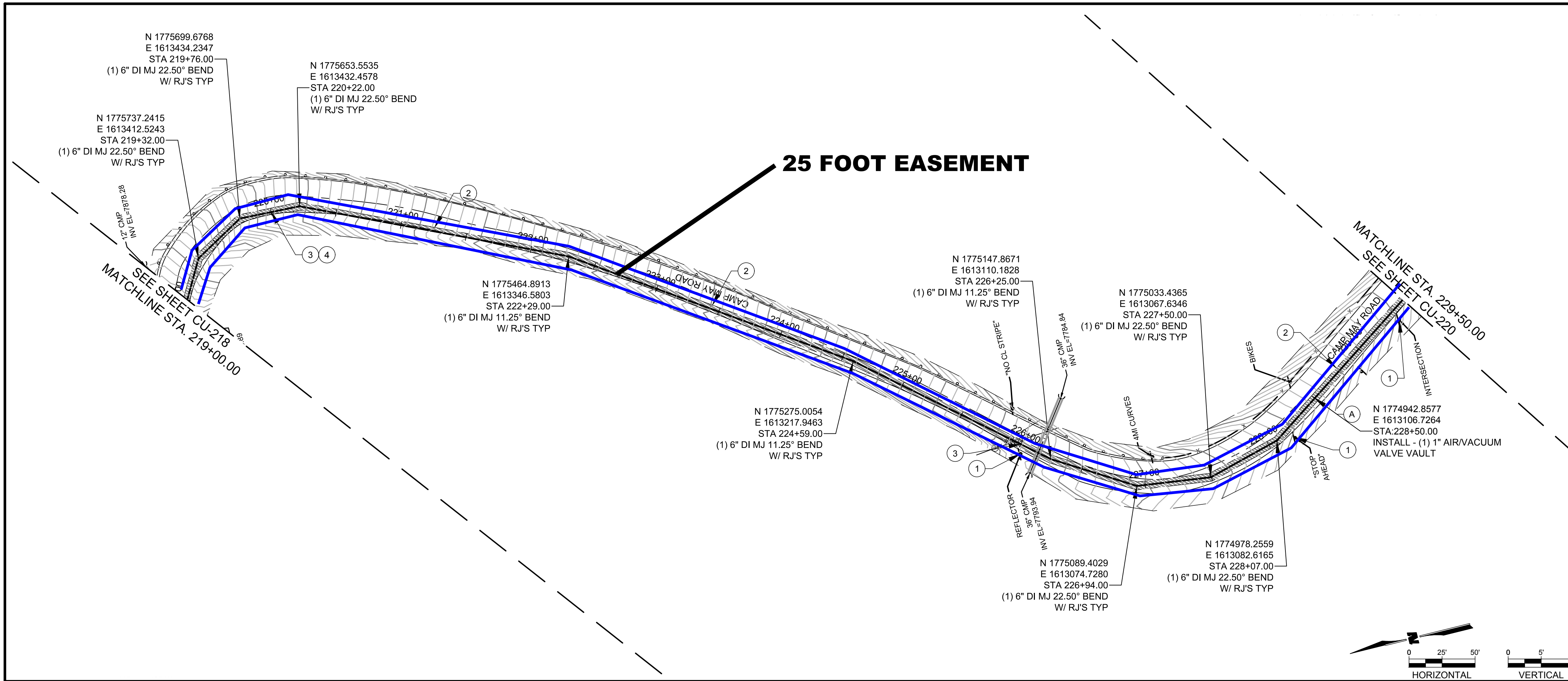
REV.	DATE	DESCRIPTION	BY

PROJECT NO:	1560021400
DESIGNED BY:	BJA
DRAWN BY:	STAFF
CHECKED BY:	BJA
DATE:	JUNE 2018

SHEET TITLE
**WATER LINE PLAN
 AND PROFILE**

SHEET NO:
CU-218

6/8/2018 M:\MSD\15-600-214-00\2_Disciplines\sheets - utilities\02_CIVIL\IP&P\15621400_PP-02.dwg



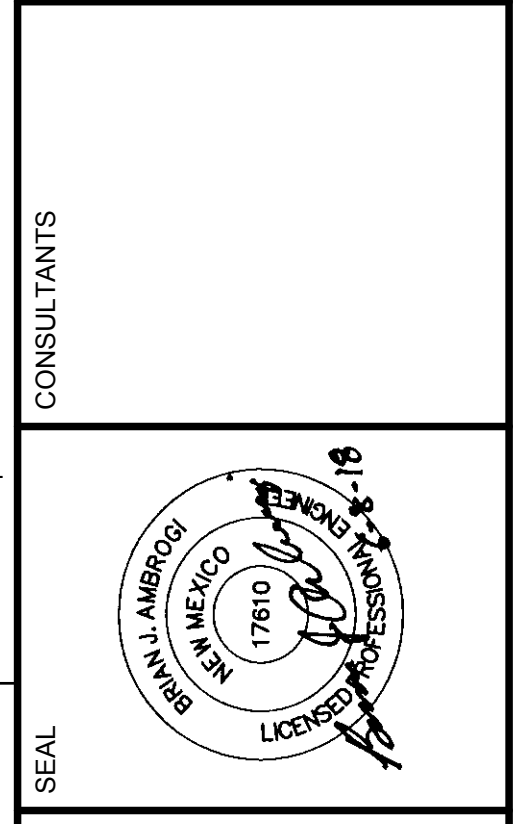
GENERAL NOTES

1. ALL UNDERGROUND UTILITIES SHOWN ON THIS PLAN ARE APPROXIMATE LOCATIONS. CONTRACTOR SHALL VERIFY LOCATION OF ALL UNDERGROUND UTILITIES BEFORE COMMENCING WORK.
2. MINIMUM 1.5 FT CLEARANCE BETWEEN PIPELINE AND EXISTING UTILITIES, OR USE LEAN FILL ASTM D-1557.
3. PROTECT EXISTING TREES AND EXISTING FENCING FROM DAMAGE, UNLESS OTHERWISE NOTED ON PLAN.
4. CONTRACTOR SHALL COORDINATE WITH THE COUNTY TRAFFIC OPERATIONS DEPARTMENT IN THE EVENT OF ANY CONDUIT IMPACTS.
5. RESTORATION OF RIGHT OF WAY: UPON COMPLETION OF THE PIPELINE INSTALLATION WORK, ALL RUBBISH, EXCESS MATERIALS, TEMPORARY STRUCTURES AND EQUIPMENT ARE TO BE REMOVED AND THE HIGHWAY'S RIGHT OF WAY CLEANED AND RESTORED TO THE SATISFACTION OF THE CHIEF ENGINEER OR HIS AUTHORIZED REPRESENTATIVE. DISTURBED AREAS SHALL BE SEEDED OR OTHERWISE PROTECTED TO CONTROL EROSION AS SPECIFIED BY NMDOT.
6. WHERE CROSSING UNDER OVERHEAD UTILITIES, CONTRACTOR SHALL MARK UTILITIES WITH RED MARKERS AND PROTECT OVERHEAD UTILITIES FROM DAMAGE DURING CONSTRUCTION.
7. AIR/VACUUM VAULTS TO BE LOCATED A MINIMUM OF 10' FROM EDGE OF PAVEMENT. SEE DTL ON SHT CU-502.
8. CONTRACTOR SHALL REMOVE AND RESET ALL EXISTING ROADWAY SIGNS THAT ARE DISTURBED DURING CONSTRUCTION.
9. ALL STORM DRAIN CROSSINGS ARE TO BE RESTORED TO ORIGINAL CONDITION OR BETTER. ANY STORM DRAIN CROSSINGS DAMAGED DURING CONSTRUCTION ARE TO BE REPLACED BY THE CONTRACTOR, AND ARE INCIDENTAL TO THE CONTRACT.

KEYNOTES

- 1 EXISTING SIGN OR REFLECTOR, TO BE REMOVED AND RESET AS NEEDED.
- 2 LIMITS OF ASPHALT PAVEMENT CUT
- 3 FIBER OPTIC PULL BOX SEE DTL SHT E-502
- 4 POWER CONDUIT STUB OUT SEE DTL SHT E-502

WILSON & COMPANY
 2600 THE AMERICAN RD. SUITE 100
 RIO RANCHO, NM 87124
 PHONE: 505-898-8021
 FAX: 505-898-8501
 www.wilsonco.com



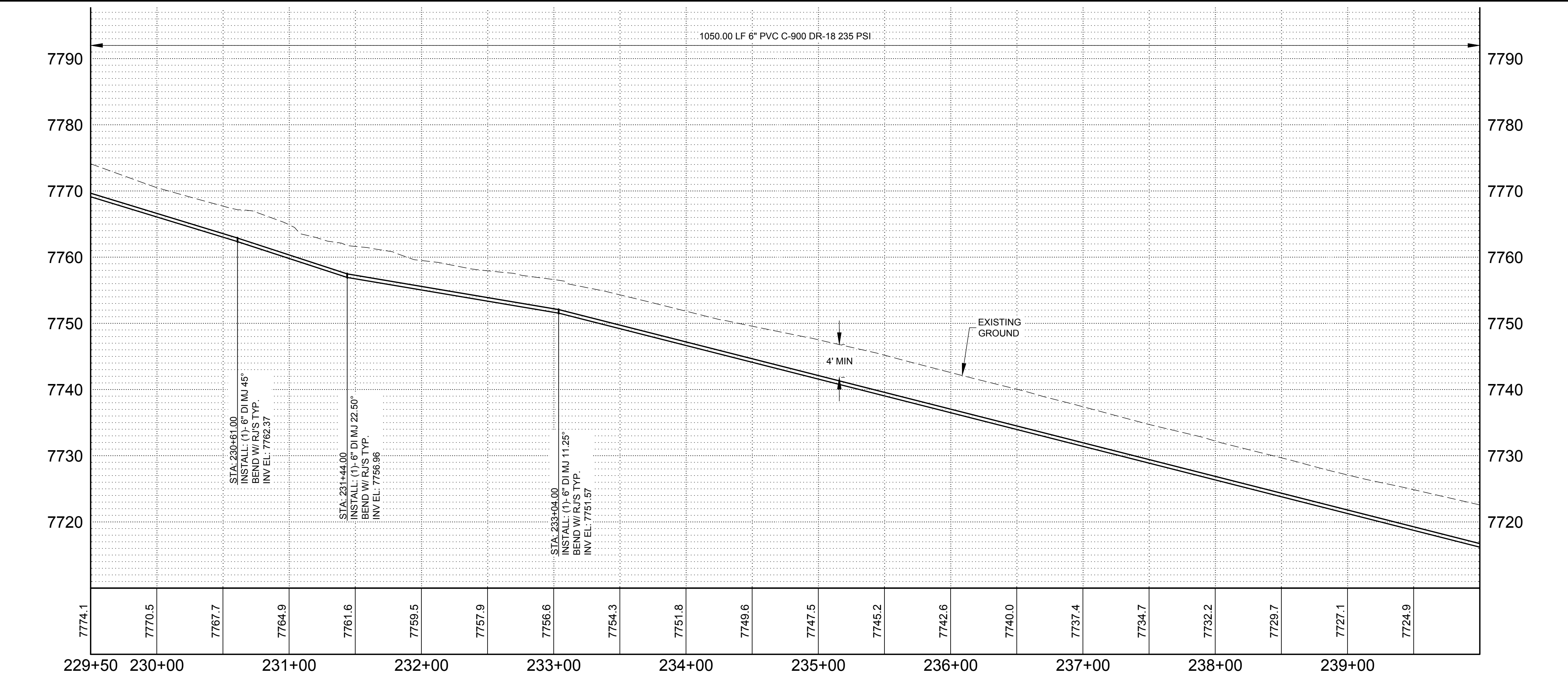
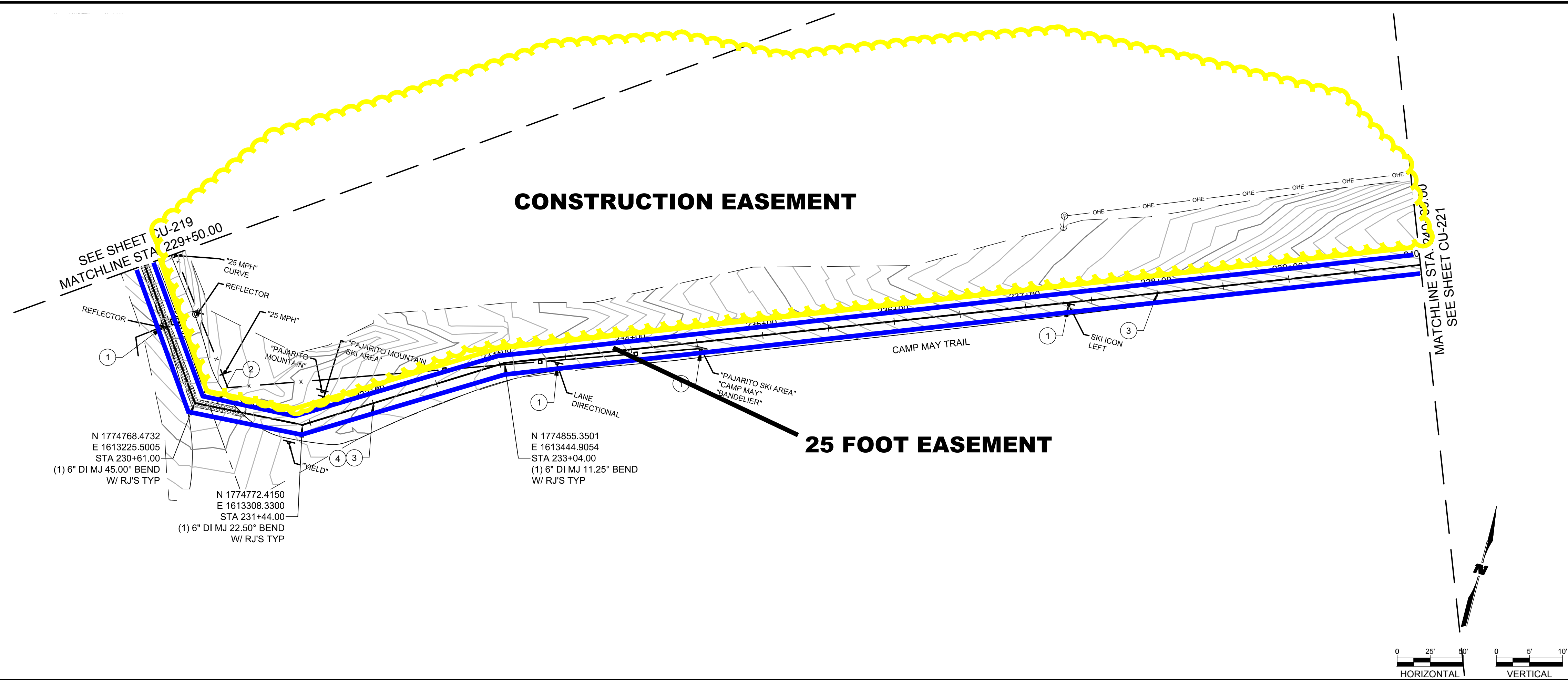
PROJECT NAME
**LOS ALAMOS COUNTY
 CAMP MAY
 WATER LINE**

REV.	DATE	DESCRIPTION	BY

PROJECT NO: 1560021400
 DESIGNED BY: BJA
 DRAWN BY: STAFF
 CHECKED BY: BJA
 DATE: JUNE 2018

SHEET TITLE
**WATER LINE PLAN
 AND PROFILE**

SHEET NO:
CU-219



GENERAL NOTES

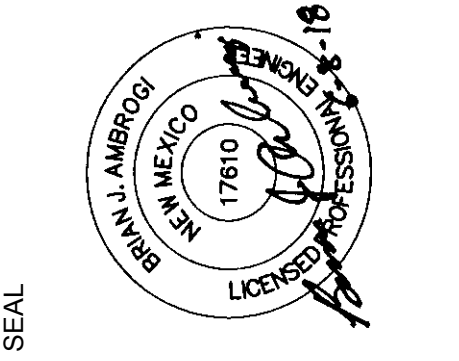
1. ALL UNDERGROUND UTILITIES SHOWN ON THIS PLAN ARE APPROXIMATE LOCATIONS. CONTRACTOR SHALL VERIFY LOCATION OF ALL UNDERGROUND UTILITIES BEFORE COMMENCING WORK.
2. MINIMUM 1.5 FT CLEARANCE BETWEEN PIPELINE AND EXISTING UTILITIES, OR USE LEAN FILL ASTM D-1557.
3. PROTECT EXISTING TREES AND EXISTING FENCING FROM DAMAGE, UNLESS OTHERWISE NOTED ON PLAN.
4. CONTRACTOR SHALL COORDINATE WITH THE COUNTY TRAFFIC OPERATIONS DEPARTMENT IN THE EVENT OF ANY CONDUIT IMPACTS.
5. RESTORATION OF RIGHT OF WAY: UPON COMPLETION OF THE PIPELINE INSTALLATION WORK, ALL RUBBISH, EXCESS MATERIALS, TEMPORARY STRUCTURES AND EQUIPMENT ARE TO BE REMOVED AND THE HIGHWAY'S RIGHT OF WAY CLEANED AND RESTORED TO THE SATISFACTION OF THE CHIEF ENGINEER OR HIS AUTHORIZED REPRESENTATIVE. DISTURBED AREAS SHALL BE SEEDED OR OTHERWISE PROTECTED TO CONTROL EROSION AS SPECIFIED BY NMDOT.
6. WHERE CROSSING UNDER OVERHEAD UTILITIES, CONTRACTOR SHALL MARK UTILITIES WITH RED MARKERS AND PROTECT OVERHEAD UTILITIES FROM DAMAGE DURING CONSTRUCTION.
7. AIR/VACUUM VAULTS TO BE LOCATED A MINIMUM OF 10' FROM EDGE OF PAVEMENT. SEE DTL ON SHT CU-502.
8. CONTRACTOR SHALL REMOVE AND RESET ALL EXISTING ROADWAY SIGNS THAT ARE DISTURBED DURING CONSTRUCTION.
9. ALL STORM DRAIN CROSSINGS ARE TO BE RESTORED TO ORIGINAL CONDITION OR BETTER. ANY STORM DRAIN CROSSINGS DAMAGED DURING CONSTRUCTION ARE TO BE REPLACED BY THE CONTRACTOR, AND ARE INCIDENTAL TO THE CONTRACT.

KEYNOTES

1. EXISTING SIGN OR REFLECTOR, TO BE REMOVED AND RESET AS NEEDED.
2. LIMITS OF ASPHALT PAVEMENT CUT
3. FIBER OPTIC PULL BOX SEE DTL SHT E-502
4. POWER CONDUIT STUB OUT SEE DTL SHT E-502

WILSON & COMPANY
 2600 THE AMERICAN RD. SE SUITE 100
 RIO RANCHO, NM 87124
 PHONE: 505-898-8021
 FAX: 505-898-8501
 www.wilsonco.com

CONSULTANTS



PROJECT NAME
**LOS ALAMOS COUNTY
 CAMP MAY
 WATER LINE**

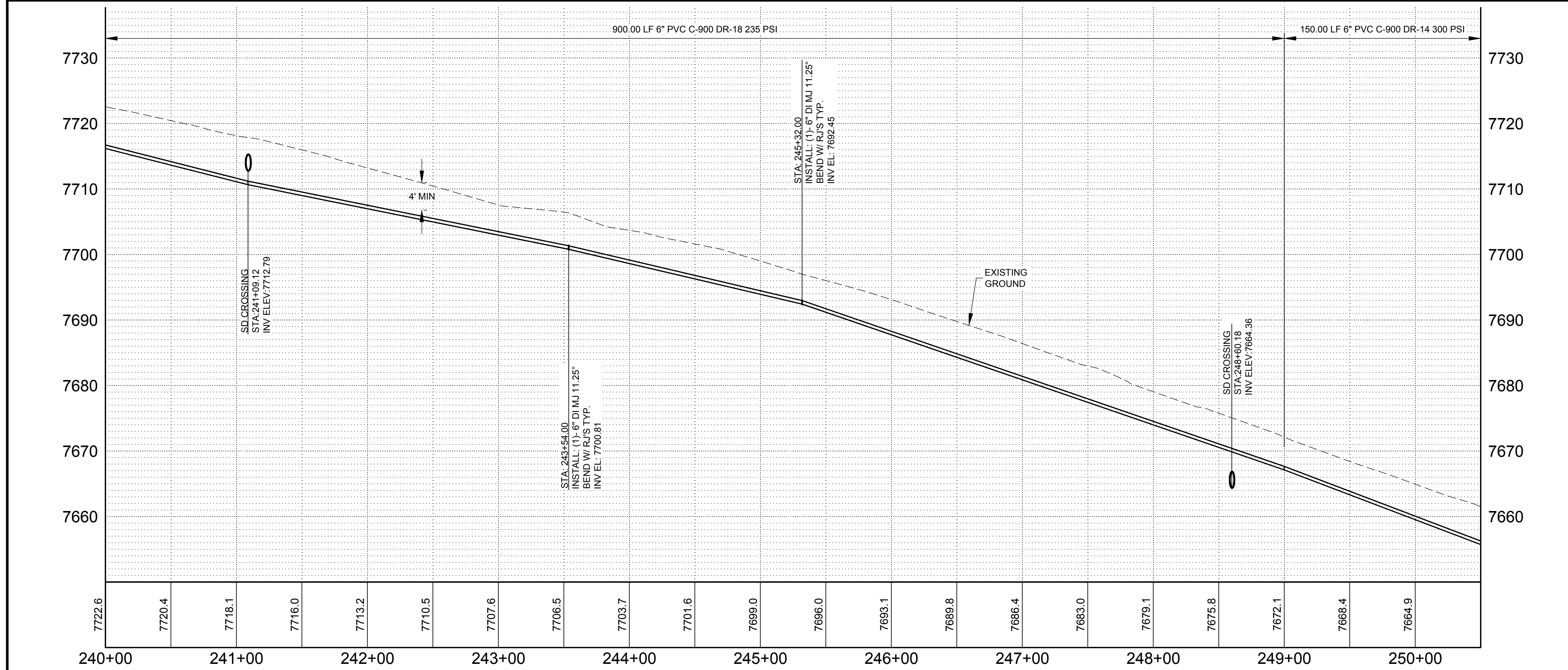
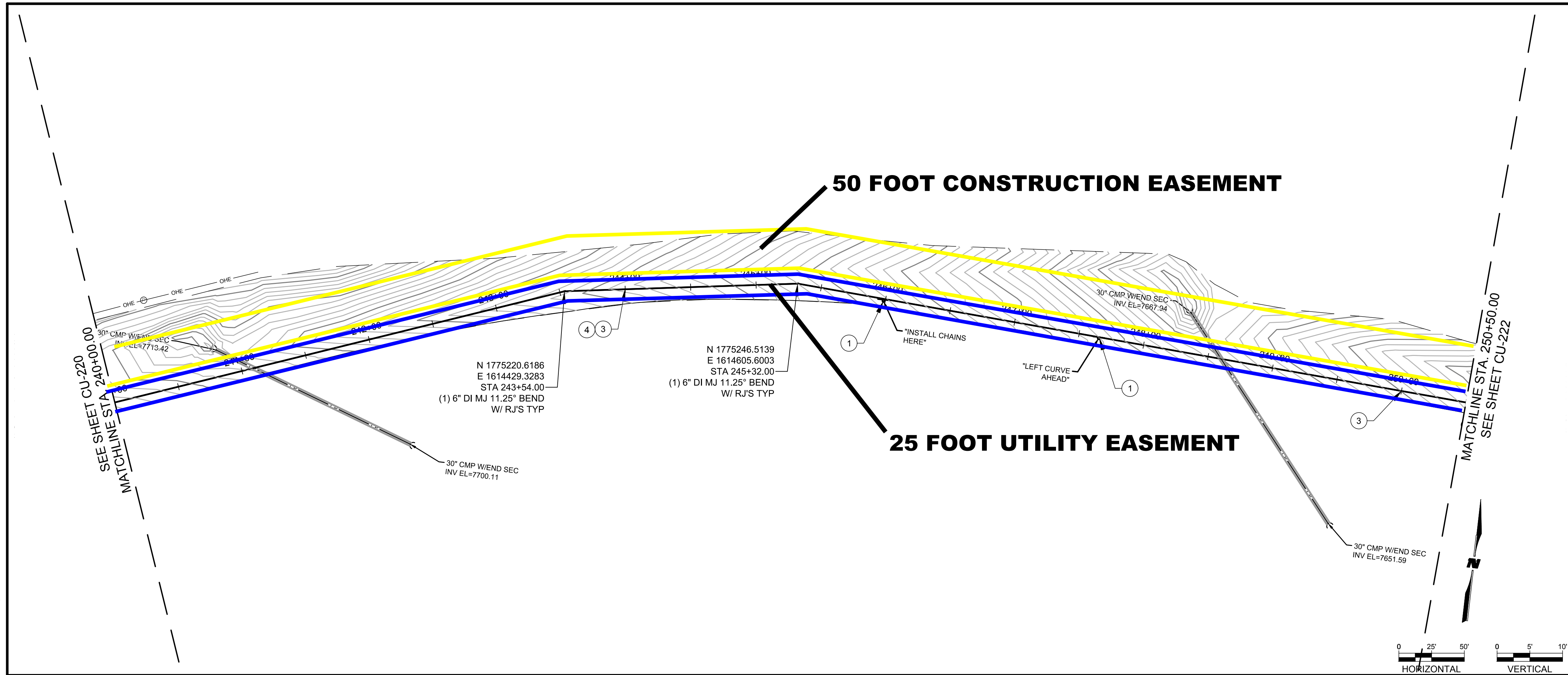
REV.	DATE	DESCRIPTION	BY

PROJECT NO: 1560021400
 DESIGNED BY: BJA
 DRAWN BY: STAFF
 CHECKED BY: BJA
 DATE: JUNE 2018

SHEET TITLE
**WATER LINE PLAN
 AND PROFILE**

SHEET NO:
CU-220

6/8/2018 M:\MSD\15-600-214-00\2_Disciplines\ SHEETS\8_sheets - utilities\02_CIVIL\IP&P\15621400_PP-02.dwg



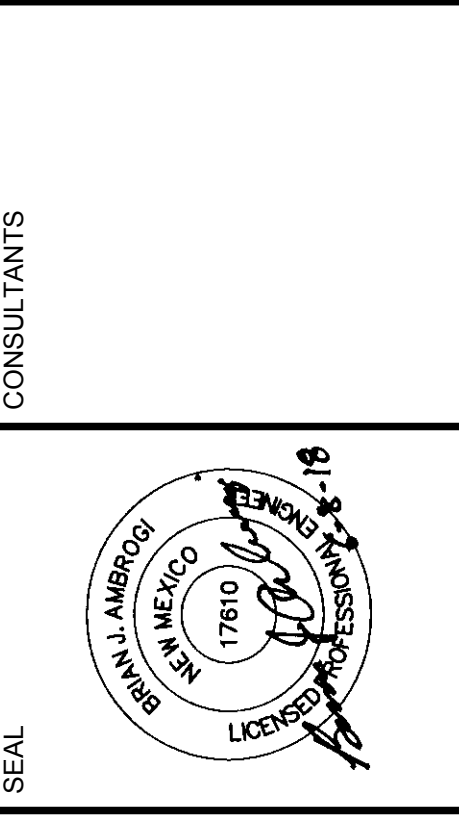
GENERAL NOTES

- ALL UNDERGROUND UTILITIES SHOWN ON THIS PLAN ARE APPROXIMATE LOCATIONS. CONTRACTOR SHALL VERIFY LOCATION OF ALL UNDERGROUND UTILITIES BEFORE COMMENCING WORK.
- MINIMUM 1.5 FT CLEARANCE BETWEEN PIPELINE AND EXISTING UTILITIES, OR USE LEAN FILL ASTM D-1557.
- PROTECT EXISTING TREES AND EXISTING FENCING FROM DAMAGE, UNLESS OTHERWISE NOTED ON PLAN.
- CONTRACTOR SHALL COORDINATE WITH THE COUNTY TRAFFIC OPERATIONS DEPARTMENT IN THE EVENT OF ANY CONDUIT IMPACTS.
- RESTORATION OF RIGHT OF WAY: UPON COMPLETION OF THE PIPELINE INSTALLATION WORK, ALL RUBBISH, EXCESS MATERIALS, TEMPORARY STRUCTURES AND EQUIPMENT ARE TO BE REMOVED AND THE HIGHWAY'S RIGHT OF WAY CLEANED AND RESTORED TO THE SATISFACTION OF THE CHIEF ENGINEER OR HIS AUTHORIZED REPRESENTATIVE. DISTURBED AREAS SHALL BE SEEDED OR OTHERWISE PROTECTED TO CONTROL EROSION AS SPECIFIED BY NMDOT.
- WHERE CROSSING UNDER OVERHEAD UTILITIES, CONTRACTOR SHALL MARK UTILITIES WITH RED MARKERS AND PROTECT OVERHEAD UTILITIES FROM DAMAGE DURING CONSTRUCTION.
- AIR/VACUUM VAULTS TO BE LOCATED A MINIMUM OF 10' FROM EDGE OF PAVEMENT. SEE DTL ON SHT CU-502.
- CONTRACTOR SHALL REMOVE AND RESET ALL EXISTING ROADWAY SIGNS THAT ARE DISTURBED DURING CONSTRUCTION.
- ALL STORM DRAIN CROSSINGS ARE TO BE RESTORED TO ORIGINAL CONDITION OR BETTER. ANY STORM DRAIN CROSSINGS DAMAGED DURING CONSTRUCTION ARE TO BE REPLACED BY THE CONTRACTOR, AND ARE INCIDENTAL TO THE CONTRACT.

KEYNOTES

- EXISTING SIGN OR REFLECTOR, TO BE REMOVED AND RESET AS NEEDED.
- LIMITS OF ASPHALT PAVEMENT CUT
- FIBER OPTIC PULL BOX SEE DTL SHT E-502
- POWER CONDUIT STUB OUT SEE DTL SHT E-502

WILSON & COMPANY
 2600 THE AMERICAN RD. SE SUITE 100
 RIO RANCHO, NM 87124
 PHONE: 505-898-8021
 FAX: 505-898-8501
 www.wilsonco.com



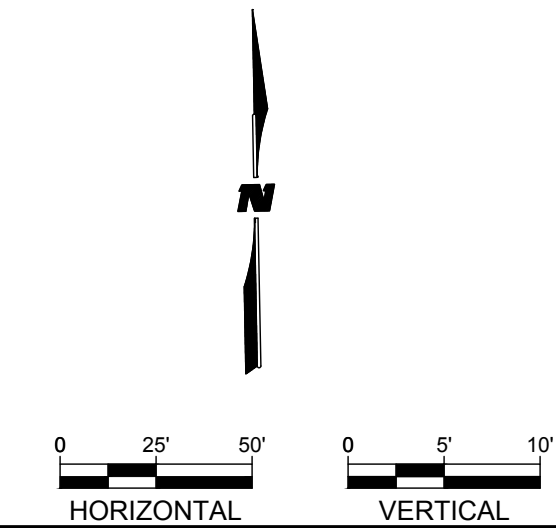
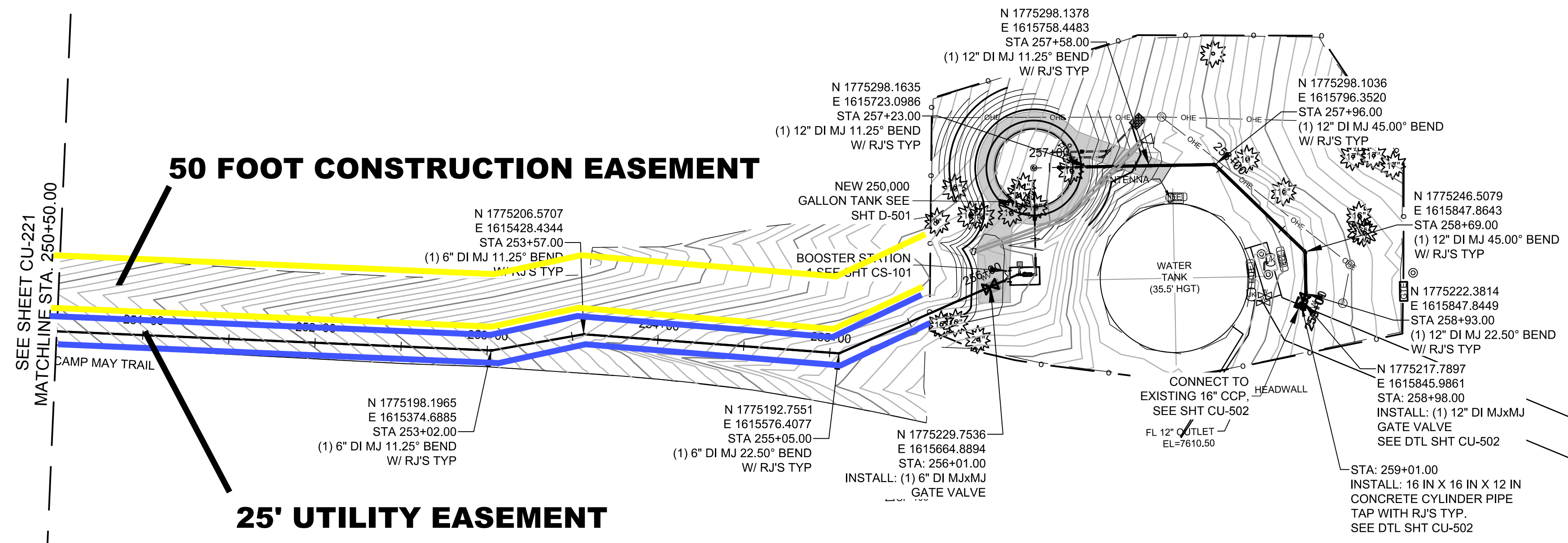
PROJECT NAME
**LOS ALAMOS COUNTY
 CAMP MAY
 WATER LINE**

REV.	DATE	DESCRIPTION	BY

PROJECT NO: 1560021400
 DESIGNED BY: BJA
 DRAWN BY: STAFF
 CHECKED BY: BJA
 DATE: JUNE 2018

SHEET TITLE
**WATER LINE PLAN
 AND PROFILE**

SHEET NO:
CU-221



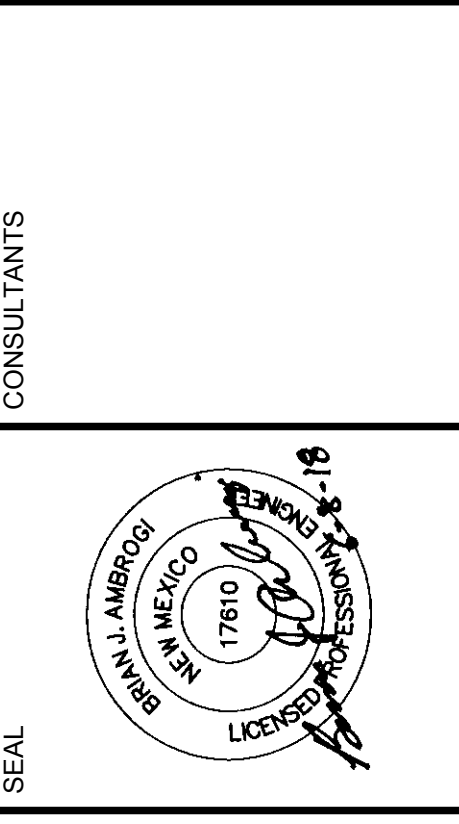
GENERAL NOTES

1. ALL UNDERGROUND UTILITIES SHOWN ON THIS PLAN ARE APPROXIMATE LOCATIONS. CONTRACTOR SHALL VERIFY LOCATION OF ALL UNDERGROUND UTILITIES BEFORE COMMENCING WORK.
2. MINIMUM 1.5 FT CLEARANCE BETWEEN PIPELINE AND EXISTING UTILITIES, OR USE LEAN FILL ASTM D-1557.
3. PROTECT EXISTING TREES AND EXISTING FENCING FROM DAMAGE, UNLESS OTHERWISE NOTED ON PLAN.
4. CONTRACTOR SHALL COORDINATE WITH THE COUNTY TRAFFIC OPERATIONS DEPARTMENT IN THE EVENT OF ANY CONDUIT IMPACTS.
5. RESTORATION OF RIGHT OF WAY: UPON COMPLETION OF THE PIPELINE INSTALLATION WORK, ALL RUBBISH, EXCESS MATERIALS, TEMPORARY STRUCTURES AND EQUIPMENT ARE TO BE REMOVED AND THE HIGHWAY'S RIGHT OF WAY CLEANED AND RESTORED TO THE SATISFACTION OF THE CHIEF ENGINEER OR HIS AUTHORIZED REPRESENTATIVE. DISTURBED AREAS SHALL BE SEEDED OR OTHERWISE PROTECTED TO CONTROL EROSION AS SPECIFIED BY NMDOT.
6. WHERE CROSSING UNDER OVERHEAD UTILITIES, CONTRACTOR SHALL MARK UTILITIES WITH RED MARKERS AND PROTECT OVERHEAD UTILITIES FROM DAMAGE DURING CONSTRUCTION.
7. AIR/VACUUM VAULTS TO BE LOCATED A MINIMUM OF 10' FROM EDGE OF PAVEMENT. SEE DTL ON SHT CU-502.
8. CONTRACTOR SHALL REMOVE AND RESET ALL EXISTING ROADWAY SIGNS THAT ARE DISTURBED DURING CONSTRUCTION.
9. ALL STORM DRAIN CROSSINGS ARE TO BE RESTORED TO ORIGINAL CONDITION OR BETTER. ANY STORM DRAIN CROSSINGS DAMAGED DURING CONSTRUCTION ARE TO BE REPLACED BY THE CONTRACTOR, AND ARE INCIDENTAL TO THE CONTRACT.

KEYNOTES

- 1 EXISTING SIGN OR REFLECTOR, TO BE REMOVED AND RESET AS NEEDED.
- 2 LIMITS OF ASPHALT PAVEMENT CUT
- 3 FIBER OPTIC PULL BOX SEE DTL SHT E-502
- 4 POWER CONDUIT STUB OUT SEE DTL SHT E-502

WILSON & COMPANY
 2600 THE AMERICAN RD. SE SUITE 100
 RIO RANCHO, NM 87124
 PHONE: 505-898-8021
 FAX: 505-898-8501
 www.wilsonco.com



PROJECT NAME
**LOS ALAMOS COUNTY
 CAMP MAY
 WATER LINE**

REV.	DATE	DESCRIPTION	BY

PROJECT NO: 1560021400
 DESIGNED BY: BJA
 DRAWN BY: STAFF
 CHECKED BY: BJA
 DATE: JUNE 2018

SHEET TITLE
**WATER LINE PLAN
 AND PROFILE**

SHEET NO:
CU-222

