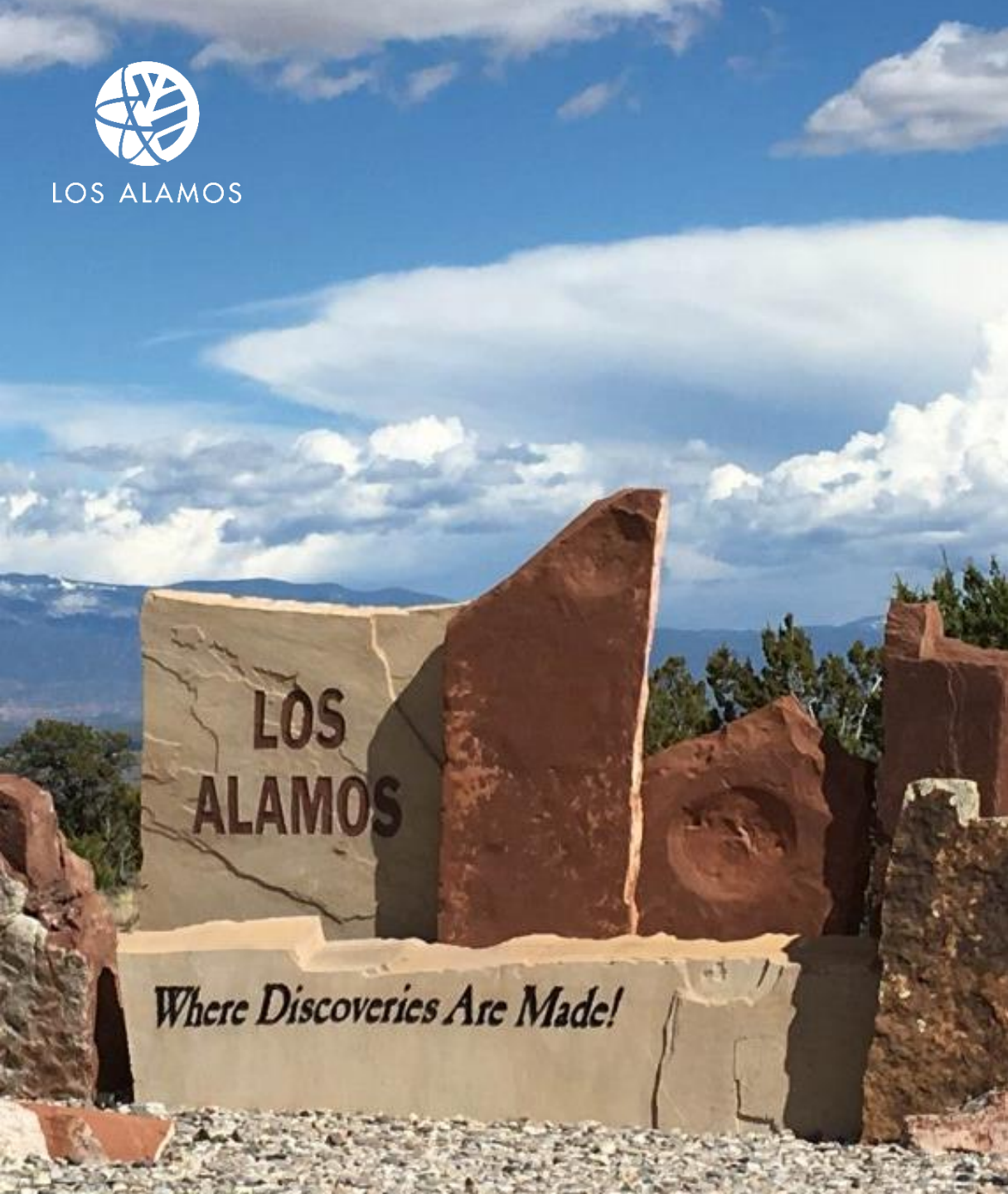




LOS ALAMOS



## Transportation Board – Project Update 2 May 2024

Initial Evaluation of Transit  
Center Sites in Los Alamos  
and White Rock



LOS ALAMOS

# Agenda

1. Introduction
2. Programming & Community Survey
3. Site Screening
4. Next Steps



LOS ALAMOS

# Introduction



LOS ALAMOS

Introduction

# The Project

## Transit Center Goals

- Enhance transit services for commuters and residents
- Accommodate future transit expansion
- Promote economic development

## Objective

- Evaluate sites for new transit facilities:
  - **Main Transit Center** (Los Alamos)
  - **Auxiliary Transit Center** (White Rock)

## Staff

- Keith Wilson – Project Manager, Los Alamos County
- Barb Berastegui – Project Manager, Stantec
- Rhonda Bell – Project Planner, Stantec



LOS ALAMOS

Introduction

## Who's Weighed In

- Los Alamos County, including Atomic City Transit (ACT)
- LANL
- NMDOT
- NCRTD
- General Public



LOS ALAMOS

Introduction

# Where We Are

## Process

1. Site visits
  2. Programming & Community survey
  - 3. Site Evaluation**
  4. Financing Scenarios
  5. Economic Impact Analysis
- *Future: Additional Design & Analysis (2 sites max)*

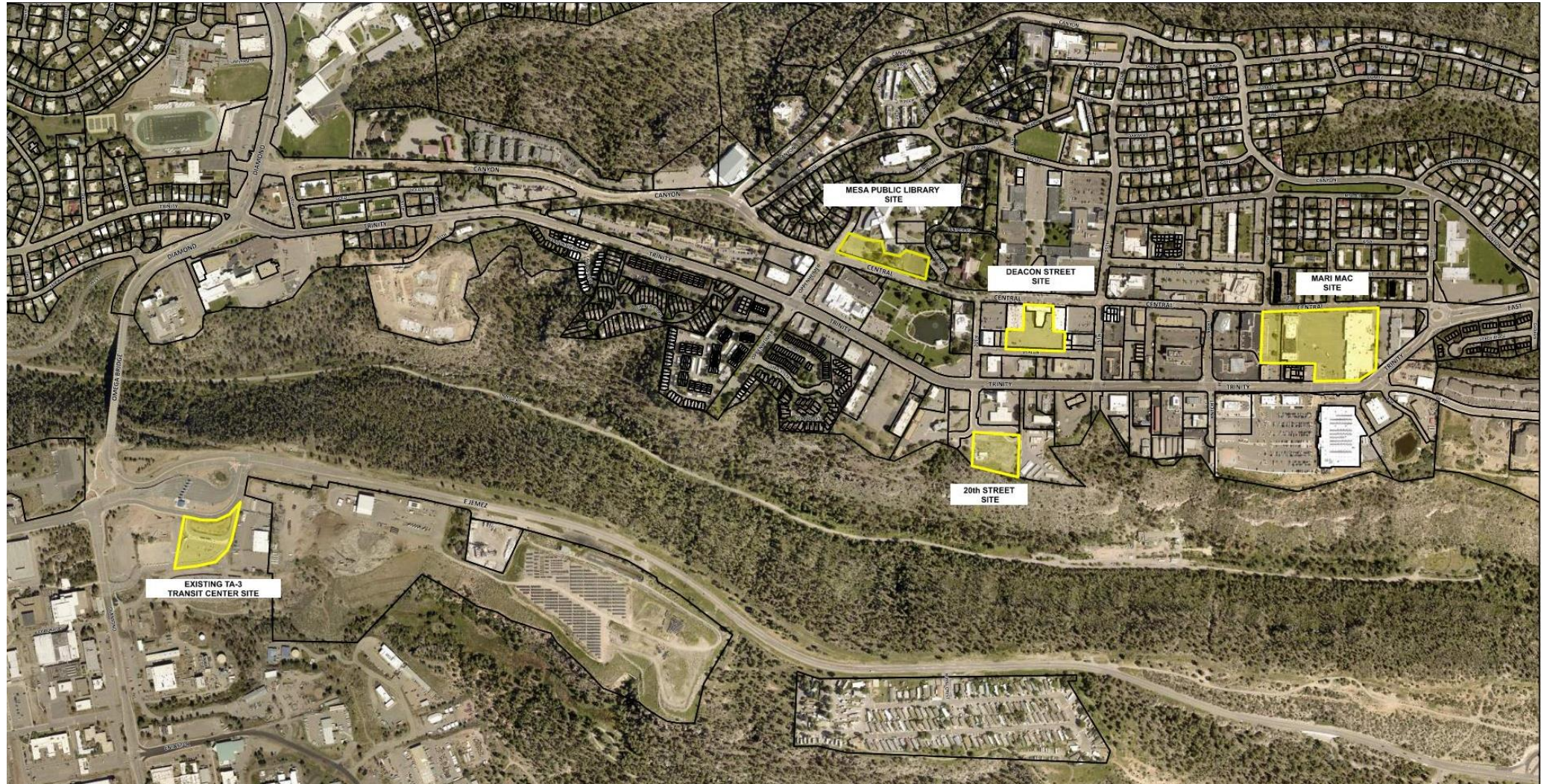


LOS ALAMOS

Introduction

# Main Transit Center Sites

- TA-3 (LANL)
- Mesa Public Library
- Deacon Street
- 20<sup>th</sup> Street
- Mari Mac



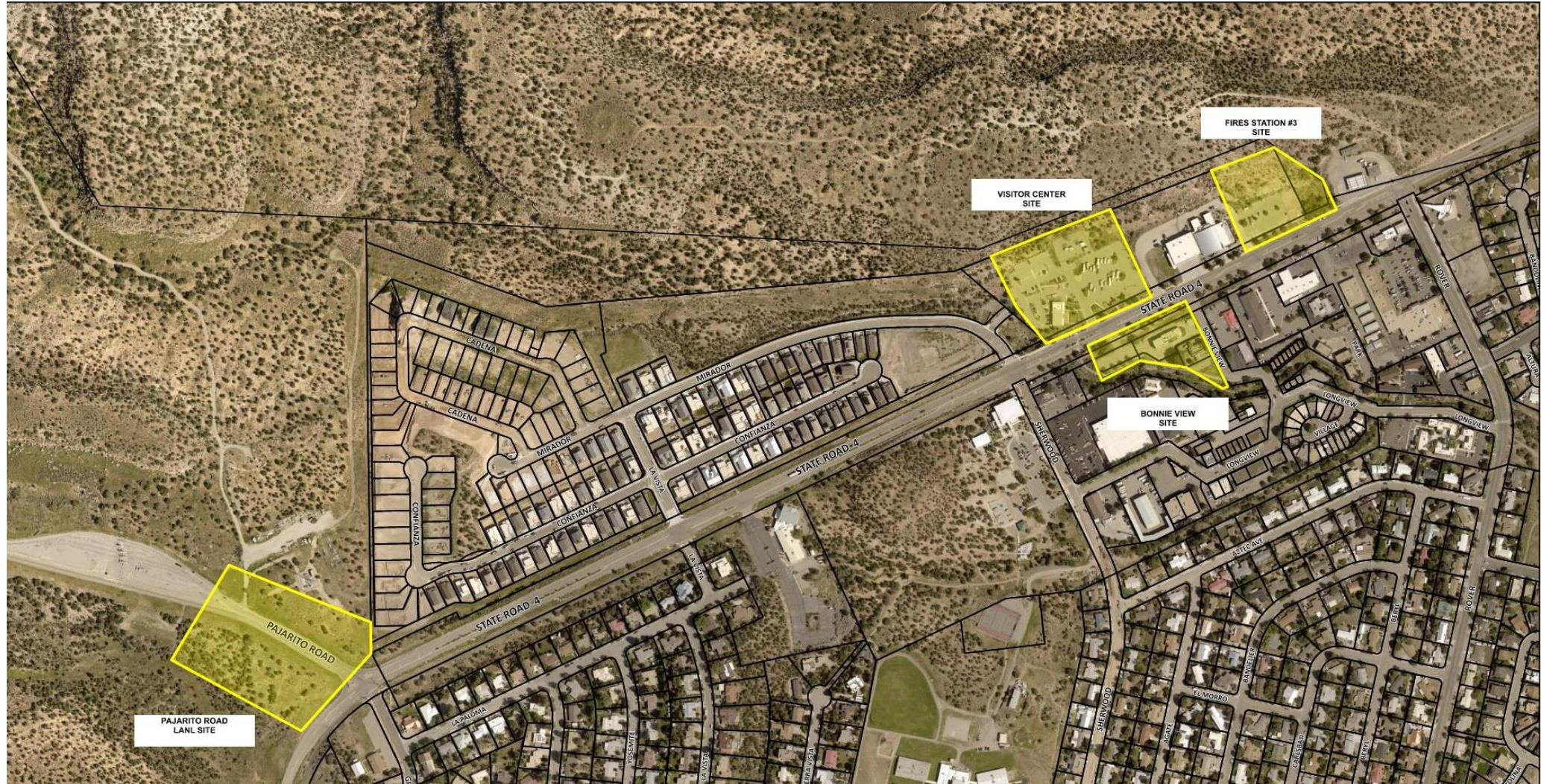


LOS ALAMOS

Introduction

# Auxiliary Transit Center Sites

- Pajarito Rd (LANL)
- Visitor Center
- Bonnie View
- Fire Station #3







LOS ALAMOS

# Programming & Community Survey



LOS ALAMOS

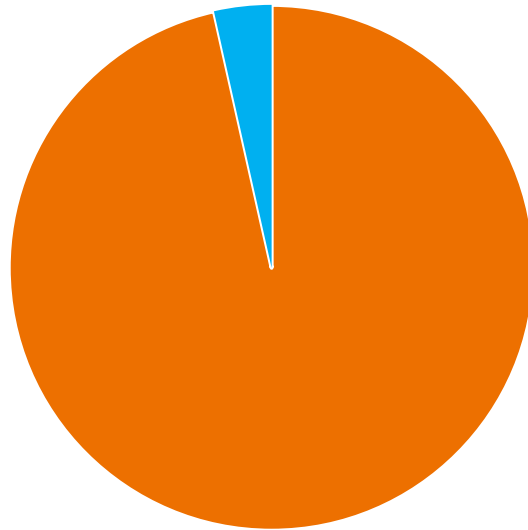
Community Survey

# Who Answered?

## Community Survey

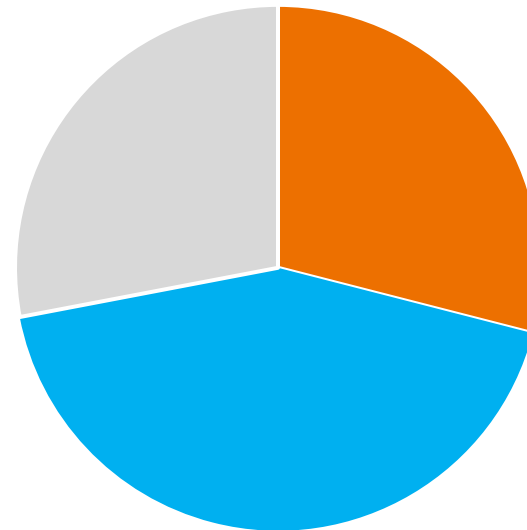
Dec 1 – 22, 2023 795 responses

Responses



■ Online ■ Paper

Transit Use



■ Daily / Weekly ■ Monthly / Yearly ■ Not at All



LOS ALAMOS

Community Survey

# Destinations

## Community Survey

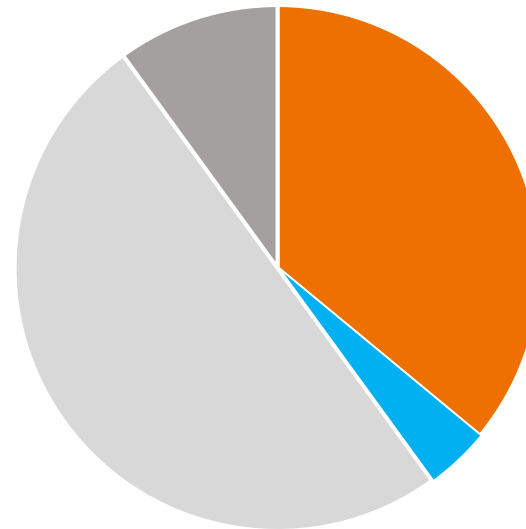
Dec 1 – 22, 2023 795 responses

Trip Start



■ LA Townsite ■ White Rock ■ Santa Fe ■ Other

Trip End



■ LA Townsite ■ White Rock ■ LANL ■ Other



LOS ALAMOS

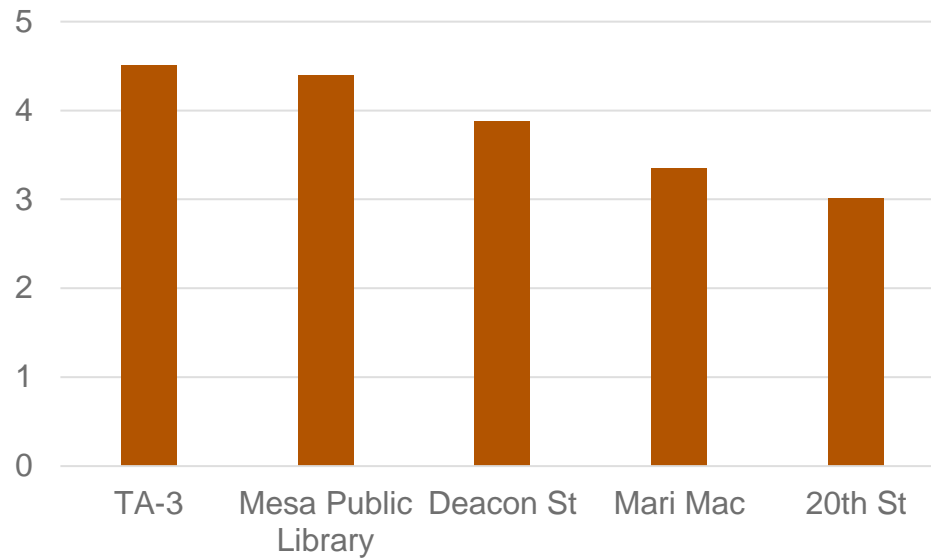
Community Survey

# Site Ranking

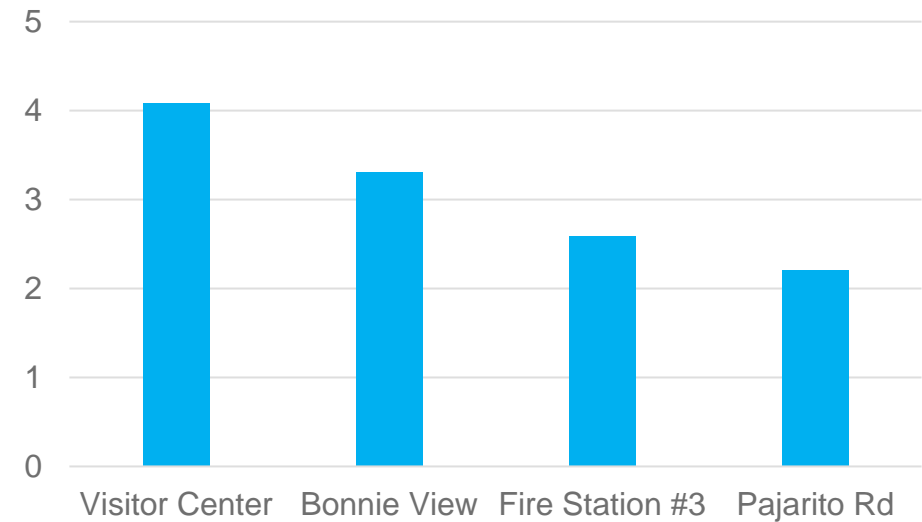
## Community Survey

Dec 1 – 22, 2023 795 responses

### Main Transit Site



### Auxiliary Transit Site





LOS ALAMOS

Community Survey

# Priorities

250 write-in comments

Topics





LOS ALAMOS

# Site Screening



# Comparing Sites

## 2 Groups of Sites

- **Main Transit Center:** 5 sites, Los Alamos Townsite
- **Auxiliary Transit Center:** 4 sites, White Rock

## 3 Build Options

- Transit Center
- Transit Center + Park-n-Ride (PnR)
- Transit Center + Transit Oriented Development (TOD)

## Comparative Analysis

- Sites ranked against each other



LOS ALAMOS

Site Screening

# Criteria

## Function

- Size, circulation, bike/ped connectivity

## Land Use/Community

- Adjacent uses, aesthetic impact, potential TOD ability to promote development

## Implementation

- Order of magnitude cost, relocation of existing uses, timing, special requirements





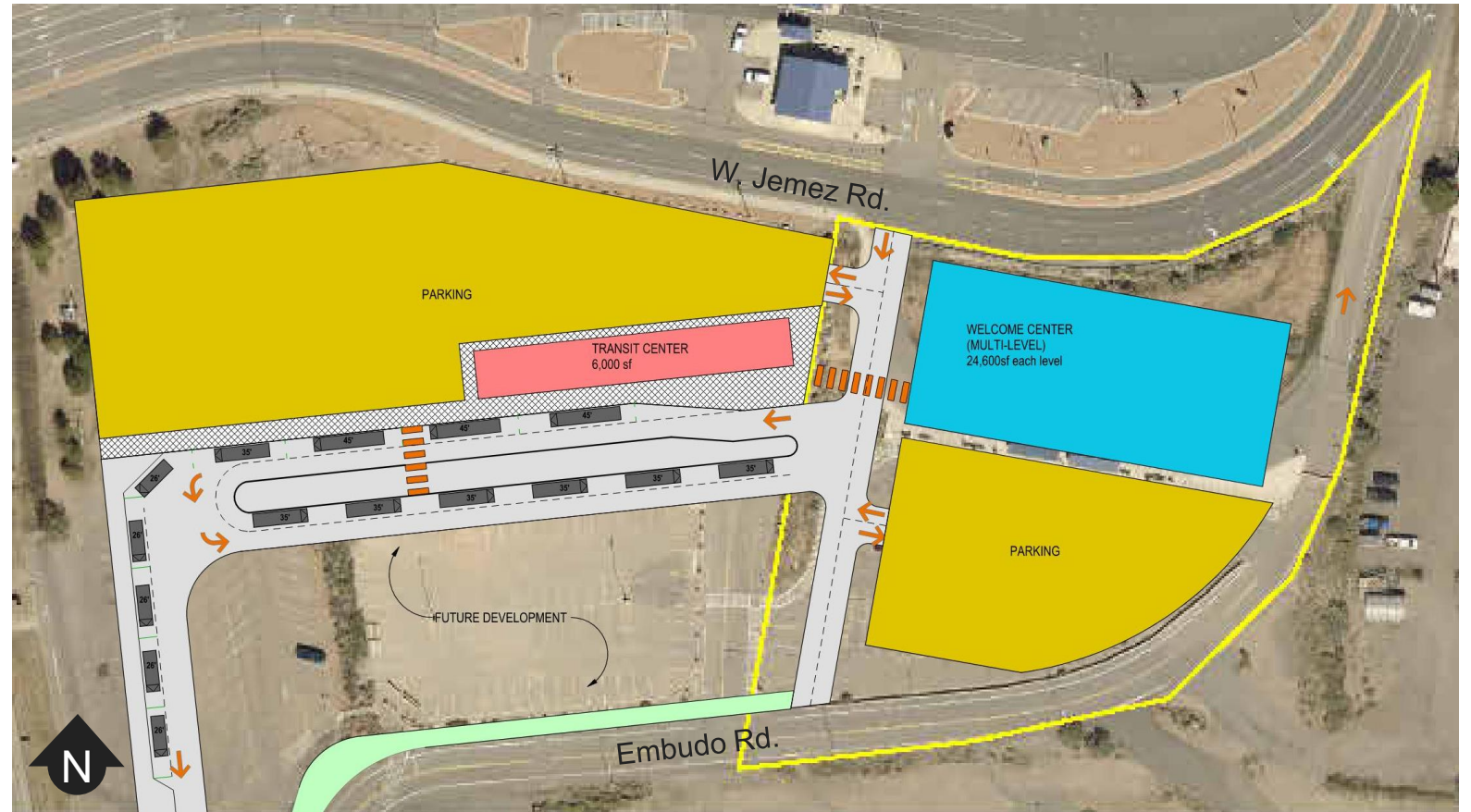
# TA-3

## Key Strengths

- 1. Serves LANL employees well
- 2. Large site = flexible layout

## Key Weaknesses

- 1. Poor pedestrian/bike access
- 2. Distance to downtown nodes/uses
- 3. No PnR or TOD potential



2 Transit Center (tie) - Park n Ride - TOD



# Mesa Public Library

## Key Strengths

1. Serves multiple key destinations
2. No major acquisition / demolition

## Key Weaknesses

1. Circuitous bus routing
2. Small site



- 5 Transit Center
- 3 Park n Ride
- 3 TOD (tie)



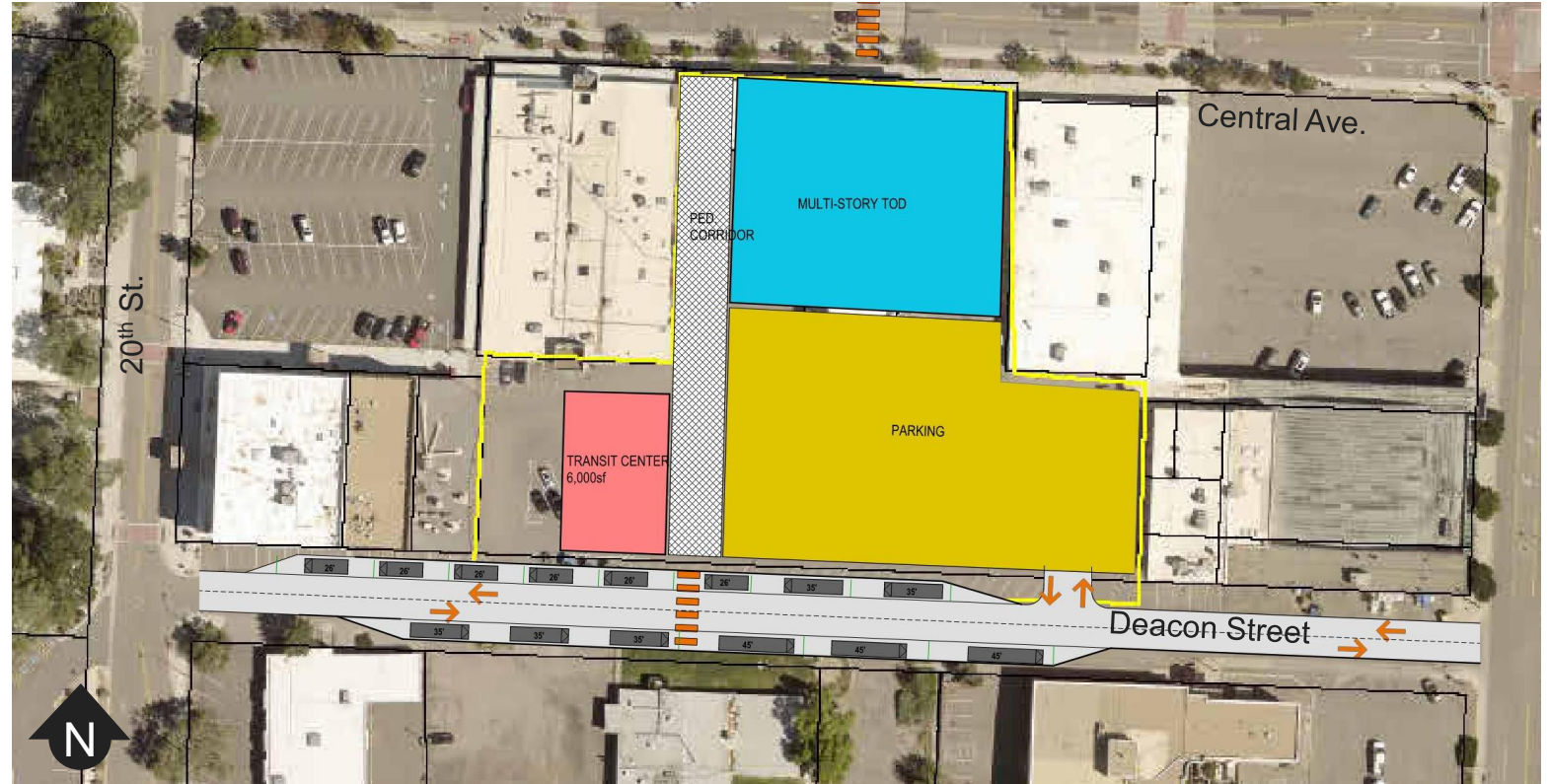
# Deacon St

## Key Strengths

- 1. Centrally situated
- 2. Serve multiple key destinations

## Key Weaknesses

- 1. Small number of PnR
- 2. Small amount of residential
- 3. Constrained transit until redevelopment
- 4. Low visibility of transit center
- 5. Requires property acquisition



- 4 Transit Center
- 4 Park n Ride
- 3 TOD (tie)



# 20th St

## Key Strengths

- 1. Serve multiple key destinations
- 2. Potential significant number of residential units

## Key Weaknesses

- 1. Extended transfer distance between buses
- 2. Low visibility for transit center



2 Transit Center (tie) 2 Park n Ride 2 TOD



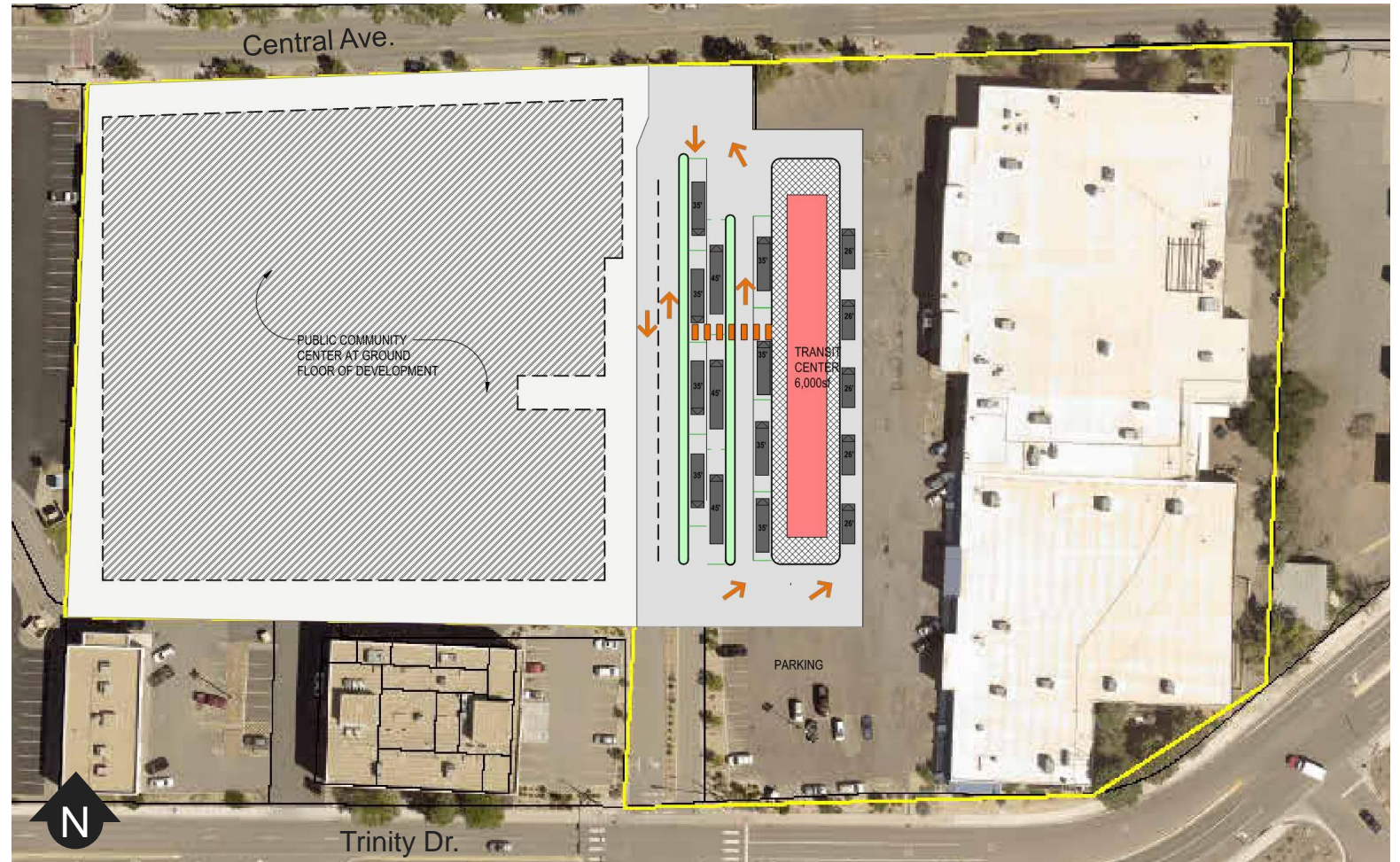
# Mari Mac

## Key Strengths

- 1. Serve multiple key destinations
- 2. Potential large number of residential units

## Key Weaknesses

- 1. Largest amount of additional travel time
- 2. Requires property acquisition



- 1 Transit Center
- 1 Park n Ride
- 1 TOD



# Main Transit Center

## Transit Center Only

1. Mari Mac
2. TA-3
3. 20<sup>th</sup> St
4. Deacon St
5. Mesa Public Library

## Transit Center + PnR

1. Mari Mac (tie)
1. 20<sup>th</sup> St (tie)
3. Mesa Public Library
4. Deacon St

## Transit Center + PnR + TOD

1. Mari Mac
2. 20<sup>th</sup> St
3. Mesa Public Library
4. Deacon St

### Assumptions / Notes

1. Compared least complex option for each site
2. TA-3 cannot accommodate PnR or TOD



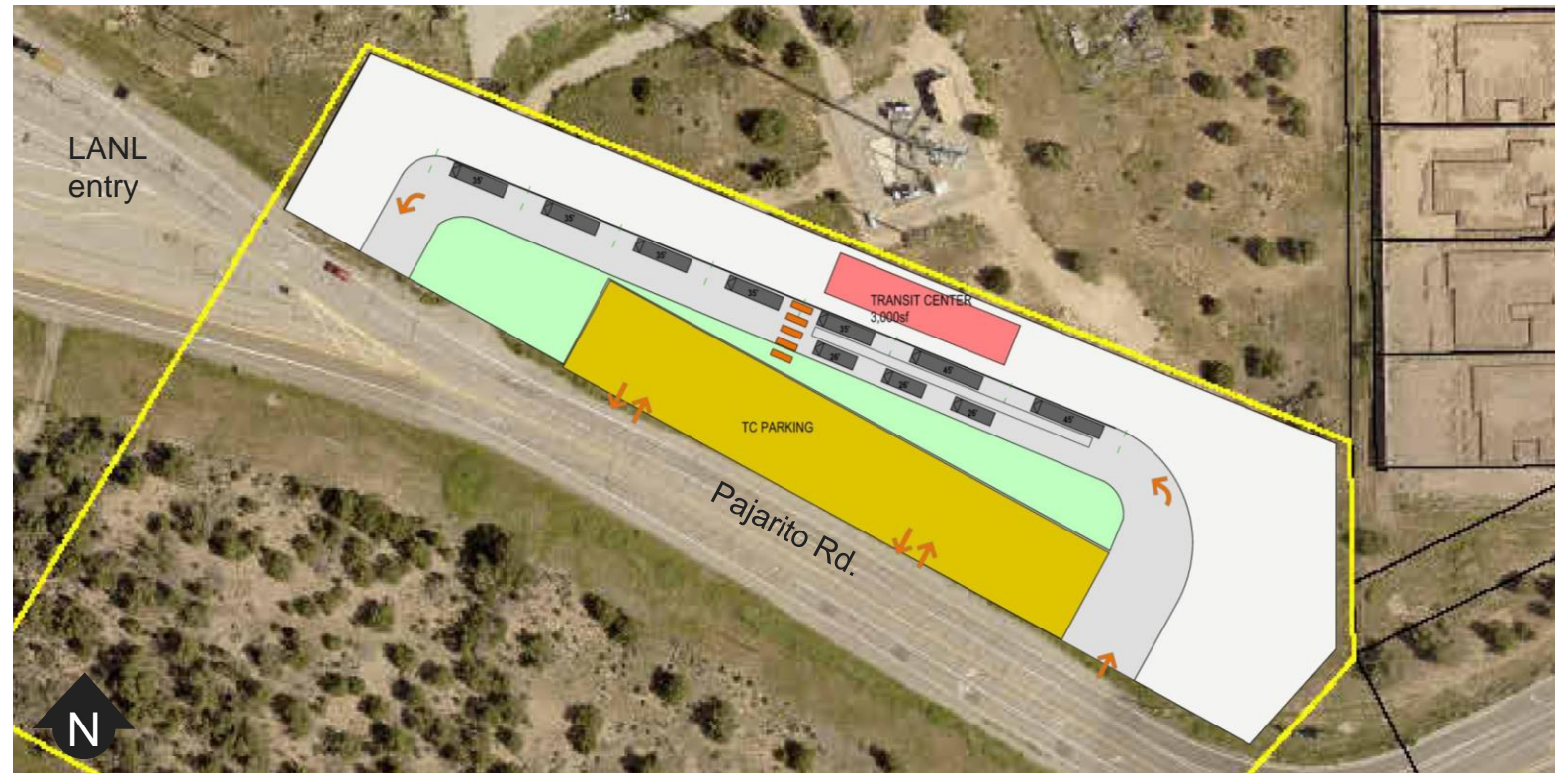
# Pajarito Rd

## Key Strengths

- 1. Signalized access for transit, bike, peds
- 2. Large site = flexible layout

## Key Weaknesses

- 1. Slightly out-of-direction for Townsite
- 2. No PnR or TOD potential



4 Transit Center   - Park n Ride (tie)   - TOD



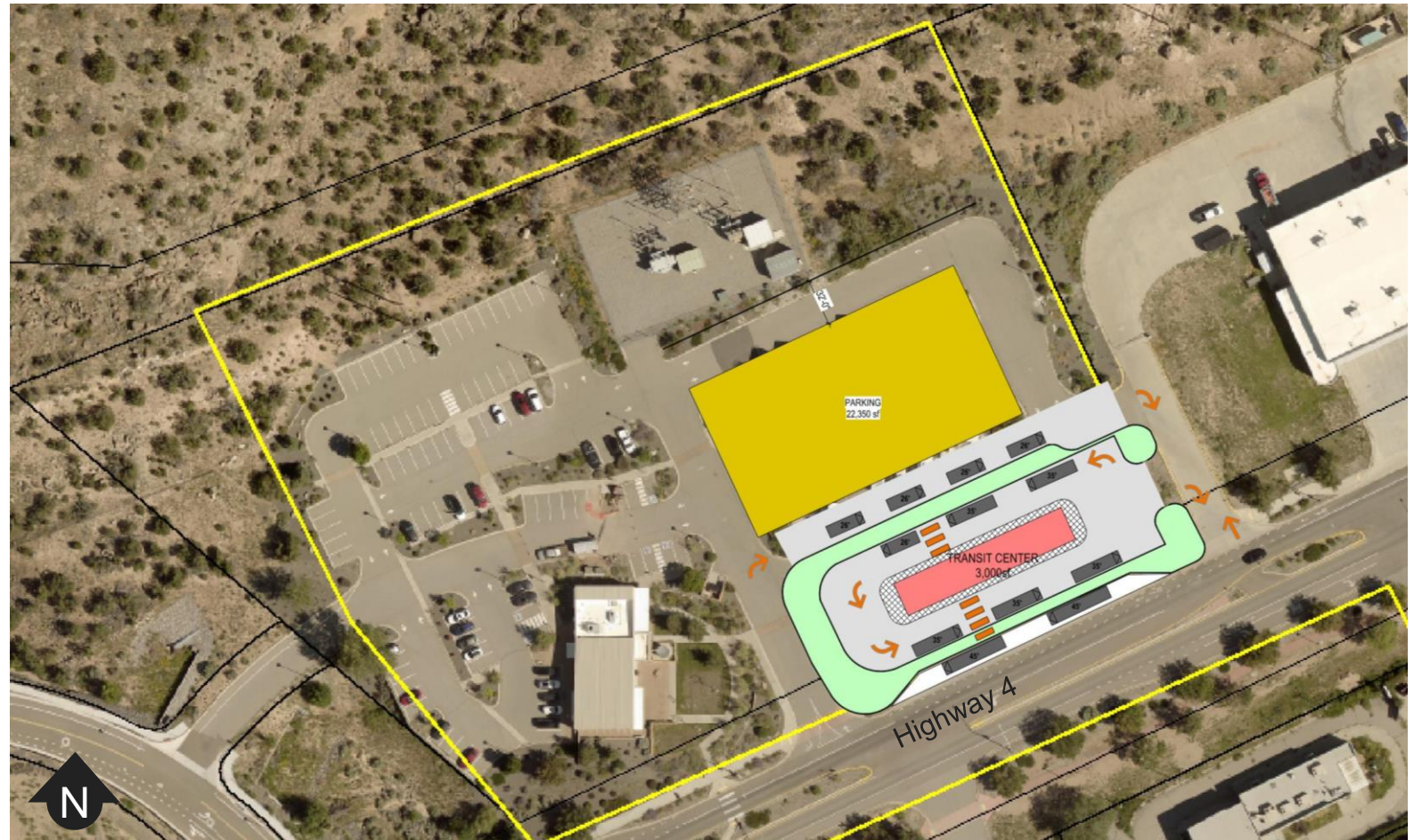
# Visitors Center

## Key Strengths

1. Contributes to civic node w/ Visitor Center and Fire Station

## Key Weaknesses

1. Majority of bike/ped need to cross Hwy 4
2. Displace well-used RV facility



- 1 Transit Center
- 1 Park n Ride
- TOD





# Bonnie View

## Key Strengths

1. Majority of bike/ped not have to cross Hwy 4
2. Can accommodate TOD

## Key Weaknesses

1. May be dependent upon re-alignment of Bonnie View Dr
2. Requires property acquisition



3 Transit Center    2 Park n Ride (tie)    1 TOD



# Fire Station #3

## Key Strengths

- 1. Separate access for bus/private vehicles

## Key Weaknesses

- 1. Majority of bike/pedestrians must cross Hwy 4



- 2 Transit Center
- 3 Park n Ride (tie)
- TOD



# Auxiliary Transit Center

## Transit Center Only

1. Visitor Center
2. Fire Station #3
3. Bonnie View (tie)
3. Pajarito Rd (tie)

## Transit Center + PnR

1. Visitor Center
2. Bonnie View
3. Fire Station #3

## Transit Center + PnR + TOD

1. Bonnie View

### Assumptions / Notes

1. Compared least complex option for each site
2. Pajarito Rd cannot accommodate PnR or TOD



LOS ALAMOS

# Next Steps



LOS ALAMOS

Next Steps

# Current Study

## Process

1. Site visits
  2. Programming & Community survey
  3. Site Evaluation
  - 4. Financing Scenarios**
  - 5. Economic Impact Analysis**
- *Future: Additional Design & Analysis (2 sites max)*



LOS ALAMOS

Next Steps

## Future Study

### **Impacts to:**

- Travel times and people impacted
- Transfer requirements
- Routes (all providers)
- Private sector interest / housing units
- Coordination w/ LANL Master Plan
- Utilities
- Traffic Impact Analysis (TIA)



LOS ALAMOS

# Comments / Contacts

**Please submit all comment by May 14, 2024 to:**

Public Works Department

1000 Central Avenue, Suite 160

Los Alamos, NM 87544

Or

Phone: (505) 662-8150

Email: [lacpw@lacnm.us](mailto:lacpw@lacnm.us)



LOS ALAMOS



**LOS ALAMOS** 6 MILES →

THE "ATOMIC CITY"

BIRTHPLACE OF THE ATOMIC AGE  
SCIENTIFIC LABORATORY AND MUSEUM  
GAS-FOOD-LODGING-GOLF COURSE

**BANDELIER NATIONAL MONUMENT**

TSANKAWI RUINS 0 MILES

← FRIJOLES CANYON 14.5 MILES  
PREHISTORIC INDIAN RUINS

← VALLE GRANDE 22.5 MILES  
LARGEST EXTINCT VOLCANIC CRATER

LOS ALAMOS CHAMBER OF COMMERCE

Thank You!